

LOC/DME I-HAD <b>110.1</b> Chan 38	APP CRS <b>011°</b>	Rwy ldg <b>11500</b> TDZE <b>312</b> Apt Elev <b>312</b>
--	------------------------	--

# ILS or LOC RWY 1R

WASHINGTON DULLES INTL (IAD)

RNP APCH-GPS. From GNATZ, or HUFFF.

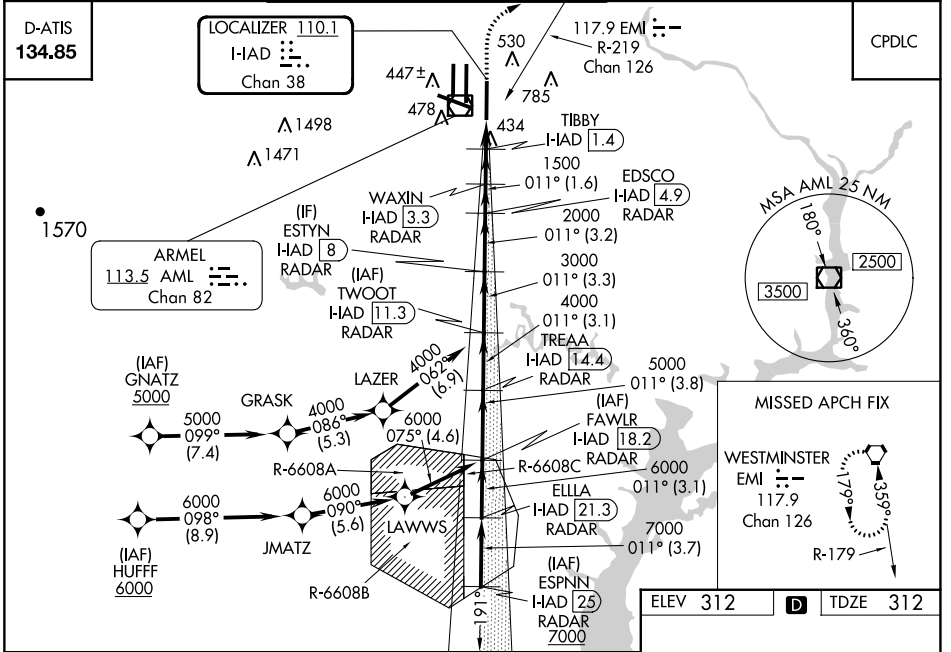
DME or RADAR required. DME required for LOC only. RADAR required for procedure entry at ESPNN.

ALSF-2

MISSED APPROACH: Climb to 800 then climbing right turn to 3000 on heading 060° and EMI VORTAC R-219 to EMI VORTAC and hold.

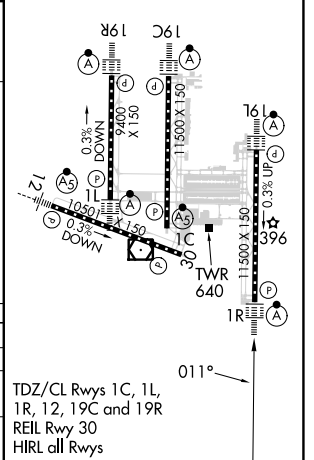
Simultaneous approach authorized.

POTOMAC APP CON <b>120.45 306.925</b> (241°-330°) <b>128.525 306.925</b> (091°-240°) <b>126.1 338.25</b> (331°-090°)	DULLES TOWER <b>120.1 317.8</b> (Rwy 1R/19L) <b>120.25 348.6</b> (Rwy 1C/19C) <b>134.425 348.6</b> (Rwys 1L/19R and 12/30)	GND CON <b>121.9 317.8</b> (EAST) <b>121.625 348.6</b> (WEST)	CLNC DEL <b>135.7 317.8</b>
---	---	---	--------------------------------



VGSI and ILS glidepath not coincident (VGSI Angle 3.00/TCH 72).

ESPNN I-HAD 25 RADAR	ELLA I-HAD 21.3 RADAR	FAWLR I-HAD 18.2 RADAR	TREA I-HAD 14.4 RADAR	TWOOT I-HAD 11.3 RADAR	ESTYN I-HAD 8 RADAR	EDSCO I-HAD 4.9 RADAR	WAXIN I-HAD 3.3 RADAR	TIBBY I-HAD 1.4 RADAR	EMI R-219
7000	7000	6000	5000	4000	3000	2000	1500	900	0.8
3.7 NM	3.1 NM	3.8 NM	3.1 NM	3.3 NM	3.2 NM	1.6 NM	1.9 NM	0.7	0.8
CATEGORY A		CATEGORY B		CATEGORY C		CATEGORY D			
S-ILS 1R		512/18		200 (200-½)					
S-LOC 1R		700/24		388 (400-½)		700/35		388 (400-¾)	
CIRCLING		940-1		628 (700-1)		940-1¾		1180-2¾	
						628 (700-1¾)		868 (900-2¾)	



NE-3, 11 JUL 2024 to 08 AUG 2024

NE-3, 11 JUL 2024 to 08 AUG 2024