

APP CRS	Rwy Idg	11500
011°	TDZE	286
	Apt Elev	312

RNAV (RNP) Z RWY 1C

WASHINGTON DULLES INTL (IAD)

RNP AR APCH - GPS.

MALSR



MISSED APPROACH: Climb to 4000 direct CHDMN and hold, continue climb-in-hold to 4000.

For uncompensated Baro-VNAV systems, procedure NA below -13°C or above 54°C. Simultaneous approach authorized. For inop ALS, increase RNP 0.11 all Cnts visibility to RVR 4000.

POTOMAC APP CON
120.45 306.925 (241°-330°)
128.525 306.925 (091°-240°)
126.1 338.25 (331°-090°)

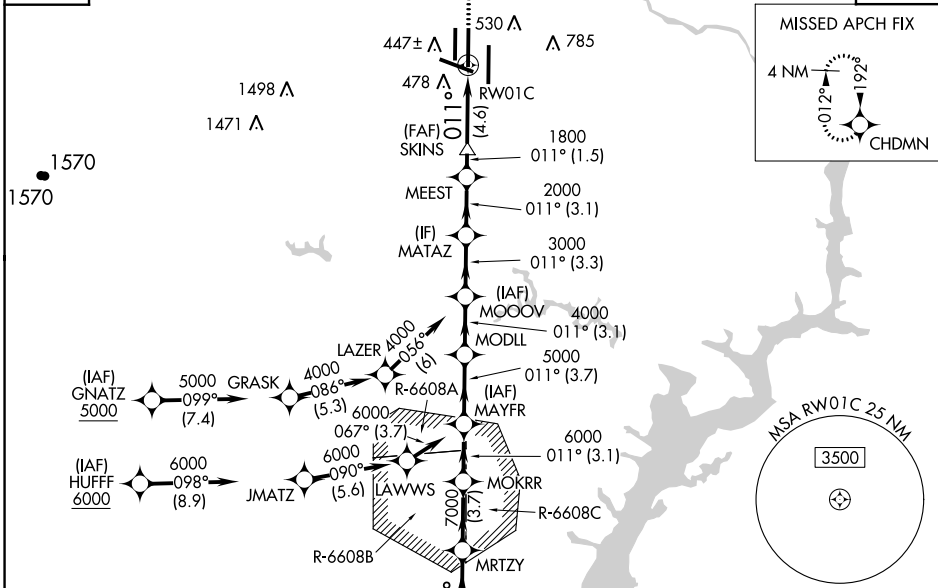
DULLES TOWER
120.1 317.8 (Rwy 1R/19L)
120.25 348.6 (Rwy 1C/19C)
134.425 348.6 (Rwys 1L/19R and 12/30)

GND CON
121.9 317.8 (EAST)
121.625 348.6 (WEST)

CLNC DEL
135.7 317.8

D-ATIS
134.85

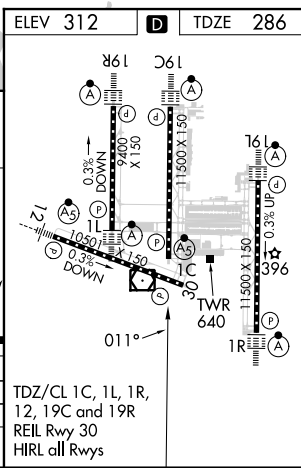
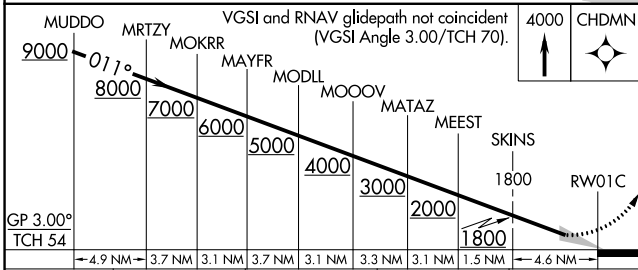
CPDLC



NE-3, 11 JUL 2024 to 08 AUG 2024

NE-3, 11 JUL 2024 to 08 AUG 2024

ELEV 312	D	TDZE 286
----------	----------	----------



CATEGORY	A	B	C	D
RNP 0.11 DA	540/24 254 (300-½)			
RNP 0.30 DA	730/45 444 (500-¾)			

AUTHORIZATION REQUIRED

TDZ/CL 1C, 1L, 1R,
 12, 19C and 19R
 REIL Rwy 30
 HIRL all Rwys