

WAAS CH <b>58105</b> <b>W19A</b>	APP CRS <b>191°</b>	Rwy ldg TDZE <b>302</b> Apt Elev <b>312</b>	<b>11500</b>
--	------------------------	---	--------------

# RNAV (GPS) Y RWY 19L

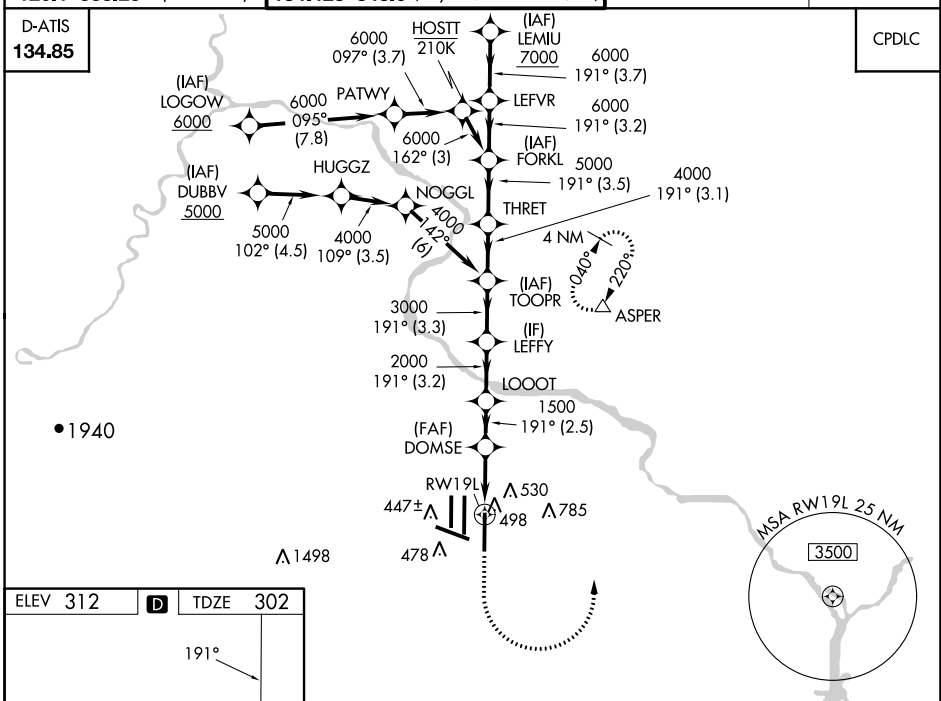
WASHINGTON DULLES INTL (IAD)

RNP APCH - GPS.	ALSF-2	MISSED APPROACH: Climb to 800 then climbing left turn to 3000 direct ASPER and hold.
<p>Simultaneous approach authorized. LNAV procedure NA during simultaneous operations.</p> <p>For uncompensated Baro-VNAV systems, procedure NA below -13°C or above 54°C.</p> <p>Use of FD or AP required during simultaneous operations.</p> <p>*RVR 1800 authorized with use of FD or AP or HUD to DA.</p>		

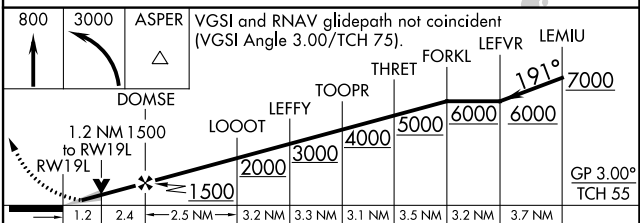
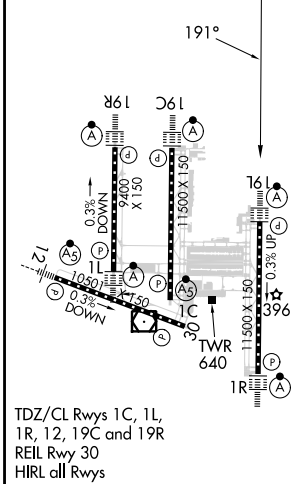
POTOMAC APP CON <b>120.45 306.925</b> (241°-330°) <b>128.525 306.925</b> (091°-240°) <b>126.1 338.25</b> (331°-090°)	DULLES TOWER <b>120.1 317.8</b> (Rwys 1R/19L) <b>120.25 348.6</b> (Rwy 1C/19C) <b>134.425 348.6</b> (Rwys 1L/19R and 12/30)	GND CON <b>121.9 317.8</b> (EAST) <b>121.625 348.6</b> (WEST)	CLNC DEL <b>135.7 317.8</b>
---	--	---	--------------------------------

D-ATIS <b>134.85</b>
-------------------------

CPDLC



ELEV 312	<b>D</b>	TDZE 302
----------	----------	----------



CATEGORY	A	B	C	D
LPV DA*	502/24 200 (200-½)			
LNAV/VNAV DA	760/45 458 (500-¾)			
LNAV MDA	760/24 458 (500-½)	760/45 458 (500-¾)		
CIRCLING	940-1 628 (700-1)	940-1¾ 628 (700-1¾)	1180-2¾ 868 (900-2¾)	

NE-3, 11 JUL 2024 to 08 AUG 2024

NE-3, 11 JUL 2024 to 08 AUG 2024