

SELINGSGROVE SIX ARRIVAL

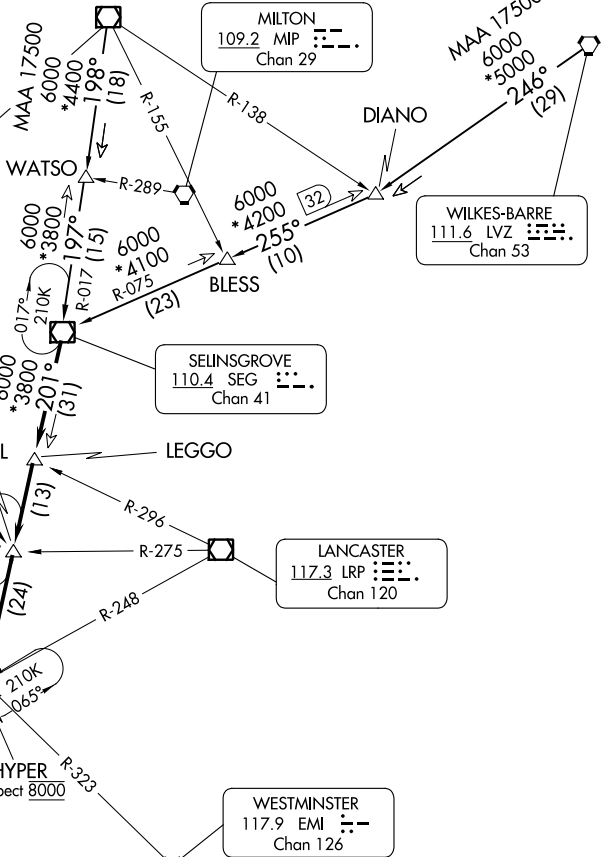
POTOMAC APP CON
133.0 288.35
D-ATIS
134.85
DULLES TOWER
120.1 317.8 (Rwy 1R/19L)
120.25 348.6 (Rwy 1C/19C)
134.425 348.6 (1L/19R, 12/30)

WILLIAMSPORT
114.4 FQM Chan 91

PHILIPSBURG
115.5 PSB Chan 102

MARTINSBURG
112.1 MRB Chan 58

FREDERICK
109.0 (T) FDK



NOTE: RADAR required.
NOTE: For non-turbojet aircraft capable of 180K or greater.

NOTE: Chart not to scale.

ARRIVAL ROUTE DESCRIPTION

WILKES-BARRE TRANSITION (LVZ.SEG6):

From over LVZ VORTAC on LVZ R-246 and SEG R-075 to SEG VOR/DME. Thence....

WILLIAMSPORT TRANSITION (FQM.SEG6):

From over FQM VOR/DME on FQM R-198 and SEG R-017 to SEG VOR/DME. Thence....

....From SEG VOR/DME on SEG R-201 to LEGGO, then on SEG R-201 to PRTZL, then on SEG R-201 to HYPER, then on FDK R-031 to FDK VOR, then on heading 190° or as assigned by ATC. Expect RADAR vectors to final approach course.

SELINGSGROVE SIX ARRIVAL

NE-3, 11 JUL 2024 to 08 AUG 2024

NE-3, 11 JUL 2024 to 08 AUG 2024