

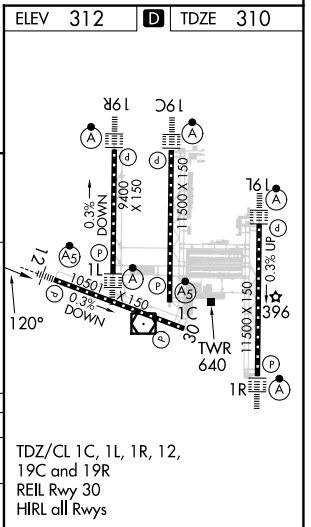
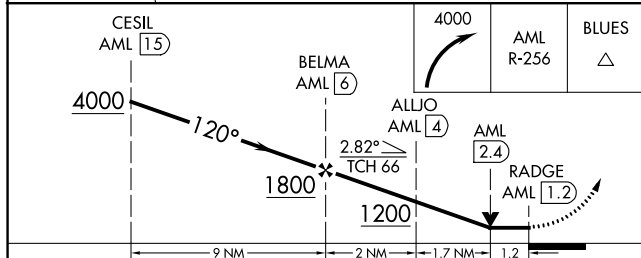
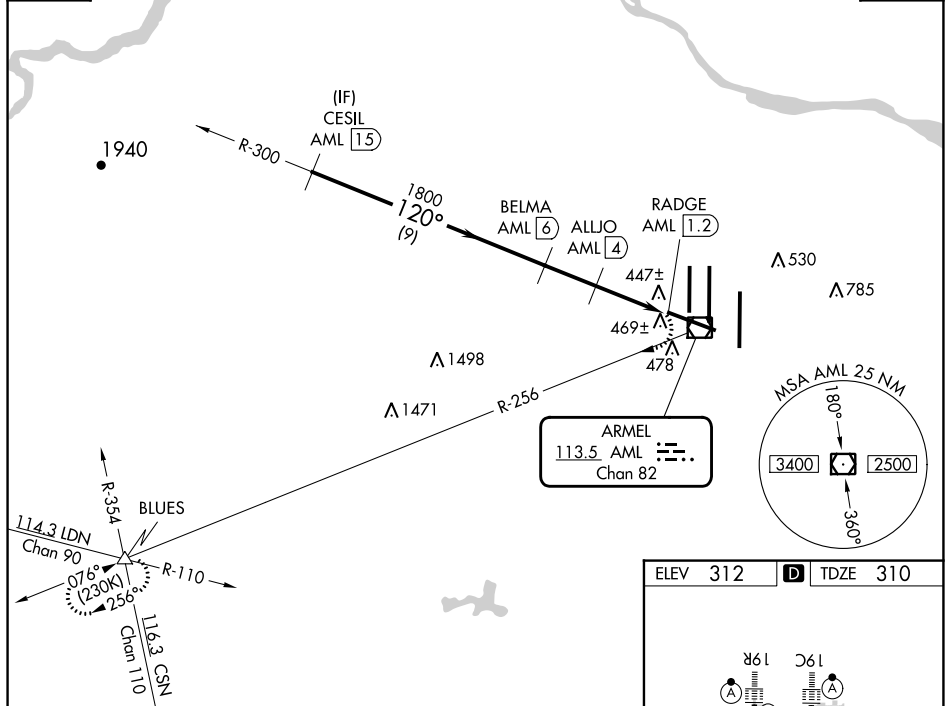
VOR/DME AML 113.5 Chan 82	APP CRS 120°	Rwy Idg TDZE Apt Elev	10501 310 312
---	------------------------	-----------------------------	--

VOR/DME RWY 12

WASHINGTON DULLES INTL (IAD)

 120.45 306.925 (241°-330°) 128.525 306.925 (091°-240°) 126.1 338.25 (331°-090°)	 120.1 317.8 (Rwy 1R/19L) 120.25 348.6 (Rwy 1C/19C) 134.425 348.6 (Rwys 1L/19R and 12/30)	GND CON 121.9 317.8 (EAST) 121.625 348.6 (WEST)	CLNC DEL 135.7 317.8
		MISSED APPROACH: Climbing right turn to 4000 on AML VOR/DME R-256 to BLUES INT and hold.	

D-ATIS 134.85	<h2>RADAR REQUIRED</h2>	CPDLC
-------------------------	-------------------------	-------



CATEGORY	A	B	C	D
S-12	740/24 430 (500-½)		740/40 430 (500-¾)	
CIRCLING	940-1 628 (700-1)		940-1¾ 628 (700-1¾)	1180-2¾ 868 (900-2¾)

NE-3, 11 JUL 2024 to 08 AUG 2024

NE-3, 11 JUL 2024 to 08 AUG 2024