

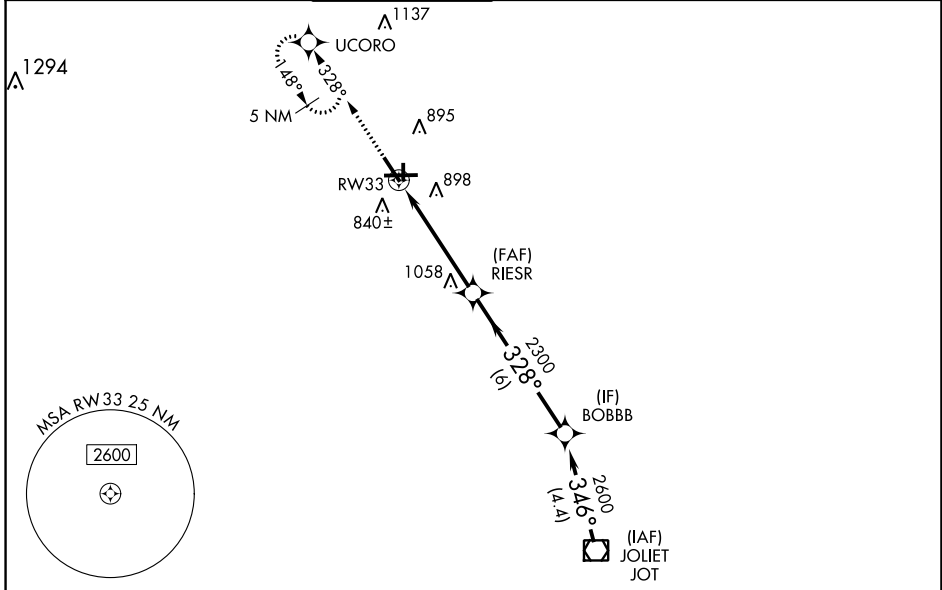
WAAS CH 49105 W33A	APP CRS 328°	Rwy ldg 5503 TDZE 705 Apt Elev 712
--	------------------------	---

RNAV (GPS) RWY 33

AURORA MUNI (A.R.R.)

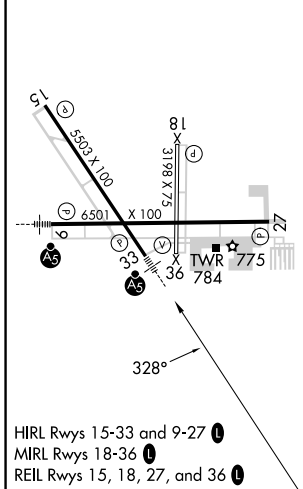
RNP APCH - GPS.		MALSRL	MISSED APPROACH: Climb to 3000 direct UCORO and hold, continue climb-in-hold to 3000.
▼ For uncompensated Baro-VNAV systems, LNAV/VNAV NA below -16°C or above 54°C. For inop MALSRL, increase LPV visibility to 1/4 SM all Cnts, LNAV Cnts A/B visibility to 1 SM.			

ATIS 125.85	CHICAGO APP CON 133.5 349.0	AURORA TOWER * 120.6 (CTAF) 0	GND CON 121.7	CLNC DEL 121.7 <small>(When tower closed)</small>	UNICOM 122.95 123.5
-----------------------	---------------------------------------	--	-------------------------	--	-------------------------------



ELEV 712	TDZE 705
----------	----------

Procedure NA for arrival on JOT VOR/DME airway radials 314 CW 328.



3000 UCORO	JOT VOR/DME			
*LNAV only.	RW33	RIESR	BOBBB	2600
	*1.3 NM to RW33	2300	328°	346° - 2600
	1.3 NM	3.5 NM	6 NM	4.4 NM
CATEGORY	A	B	C	D
LPV DA	1042-3/4 337 (400-3/4)			
LNAV/VNAV DA	1194-1 1/4 489 (500-1 1/4)			
LNAV MDA	1140-3/4 435 (500-3/4)		1140-1 435 (500-1)	
<input checked="" type="checkbox"/> CIRCLING	1200-1 488 (500-1)		1300-1 1/2 608 (700-2)	

EC-3, 11 JUL 2024 to 08 AUG 2024

EC-3, 11 JUL 2024 to 08 AUG 2024