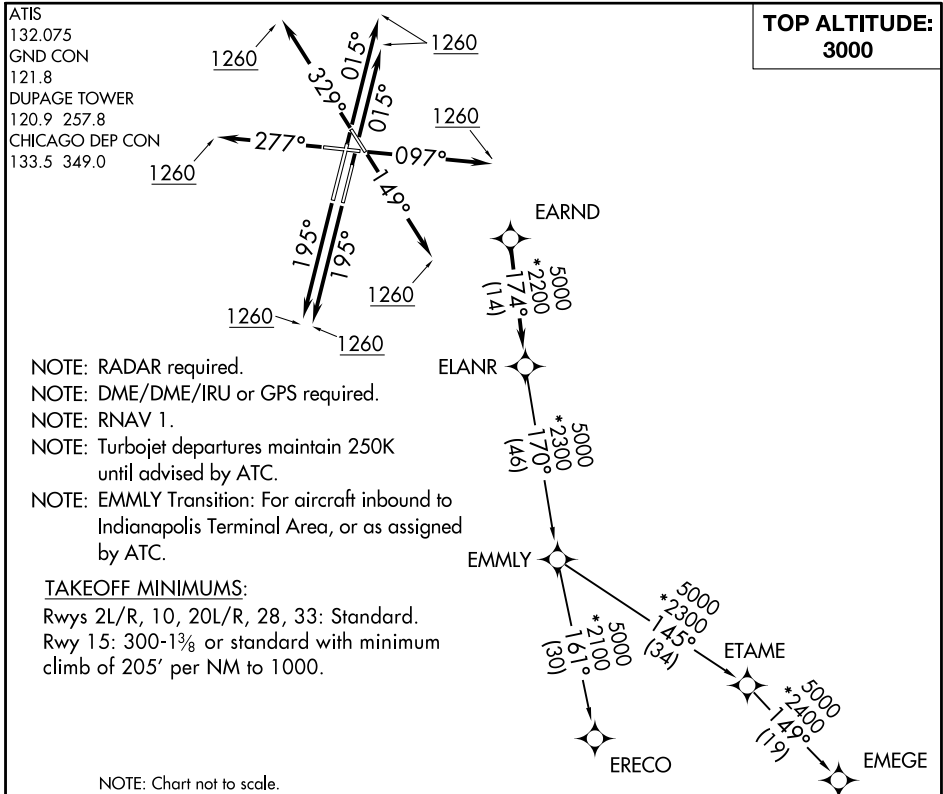


# ELANR SIX DEPARTURE (RNAV)



EC-3, 11 JUL 2024 to 08 AUG 2024

EC-3, 11 JUL 2024 to 08 AUG 2024

## DEPARTURE ROUTE DESCRIPTION

- TAKEOFF RUNWAY 2L/R: Climb heading 015° to 1260, then as assigned by ATC, for vectors to EARND. Thence. . .
- TAKEOFF RUNWAY 10: Climb heading 097° to 1260, then as assigned by ATC, for vectors to EARND. Thence. . .
- TAKEOFF RUNWAY 15: Climb heading 149° to 1260, then as assigned by ATC, for vectors to EARND. Thence. . .
- TAKEOFF RUNWAY 20L/R: Climb heading 195° to 1260, then as assigned by ATC, for vectors to EARND. Thence. . .
- TAKEOFF RUNWAY 28: Climb heading 277° to 1260, then as assigned by ATC, for vectors to EARND. Thence. . .
- TAKEOFF RUNWAY 33: Climb heading 329° to 1260, then as assigned by ATC, for vectors to EARND. Thence. . .

. . . on track 174° to ELANR, then on (transition). Maintain 3000. Expect filed altitude 10 minutes after departure.

- EMEGE TRANSITION (ELANR6.EMEGE):
- EMMLY TRANSITION (ELANR6.EMMLY):
- ERECO TRANSITION (ELANR6.ERECO):

# ELANR SIX DEPARTURE (RNAV)