

WAAS CH <b>97516</b> <b>W04A</b>	APP CRS <b>039°</b>	Rwy Idg TDZE Apt Elev	<b>5840</b> <b>668</b> <b>674</b>
--	------------------------	-----------------------------	---

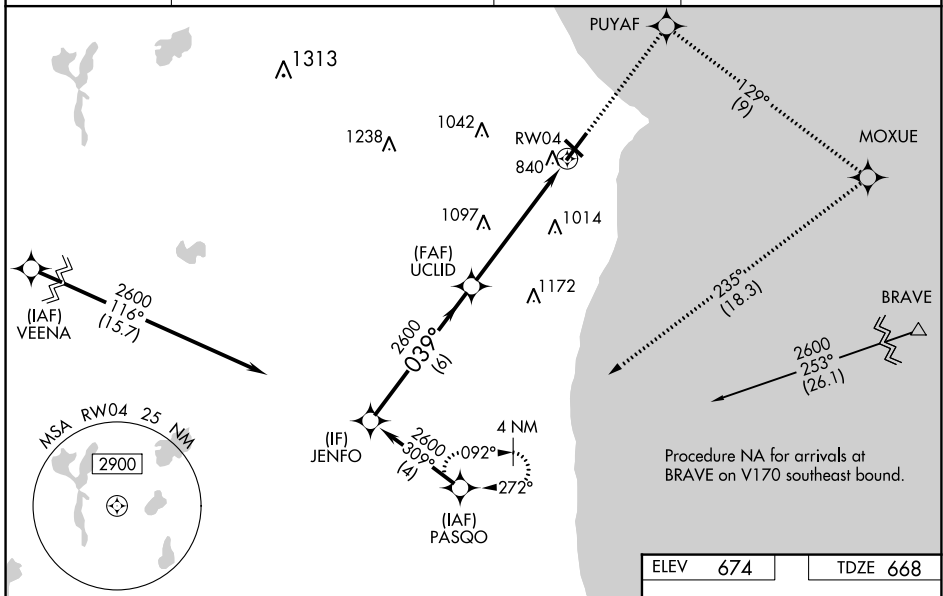
# RNAV (GPS) RWY 4

BATTEN INTL (RAC)

**⚠** Baro-VNAV NA when using General Mitchell Intl altimeter setting. For uncompensated Baro-VNAV systems, LNAV/VNAV NA below -20°C (-4°F) or above 54°C (130°F). DME/DME RNP-0.3 NA. VDP NA when using General Mitchell Intl altimeter setting. When local altimeter setting not received, use General Mitchell Intl altimeter setting; increase LPV DA to 1023 and all visibilities 1/8 SM; increase LNAV/VNAV DA to 1135 and all visibilities 1/8 SM; increase all MDA 40 feet and visibility Cat C and D 1/8 SM. Circling Rwy 14 NA at night. Rwy 4 helicopter visibility reduction below 3/8 SM NA. Inop table does not apply.

**MALSF** MISSED APPROACH: Climb to 2600 direct PUYAF and right turn on track 129° to MOXUE and right turn on track 235° to PASQO and hold.

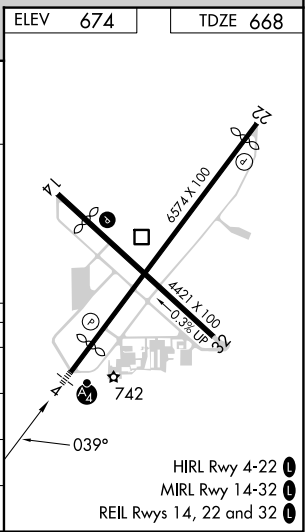
ASOS <b>121.425</b>	MILWAUKEE APP CON <b>135.875 317.725</b>	CLNC DEL <b>120.15</b>	UNICOM <b>123.075 (CTAF)</b>
------------------------	---	---------------------------	---------------------------------



EC-3, 11 JUL 2024 to 08 AUG 2024

EC-3, 11 JUL 2024 to 08 AUG 2024

ELEV	674	TDZE	668	
<p>JENFO to UCLID: 6 NM, 039°</p> <p>UCLID to PASQO: 4.4 NM, 129°</p> <p>PASQO to RWY 4: 1.5 NM, 235°</p> <p>*LNAV only.</p>				
CATEGORY	A	B	C	D
LPV DA		988-1	320 (400-1)	
LNAV/VNAV DA		1100-1½	432 (500-1½)	
LNAV MDA	1180-1	512 (600-1)	1180-1⅓	512 (600-1⅓)
<b>C</b> CIRCLING	1180-1	506 (600-1)	1380-2 706 (800-2)	1380-2¼ 706 (800-2¼)



- HIRL Rwy 4-22
- MIRL Rwy 14-32
- REIL Rws 14, 22 and 32