

LOC HBE 110.9	APP CRS 236°	Rwy Idg TDZE Apt Elev	7372 1145 1199
-------------------------	------------------------	-----------------------------	---

ILS or LOC RWY 24

ARNOLD PALMER RGNL (LBE)

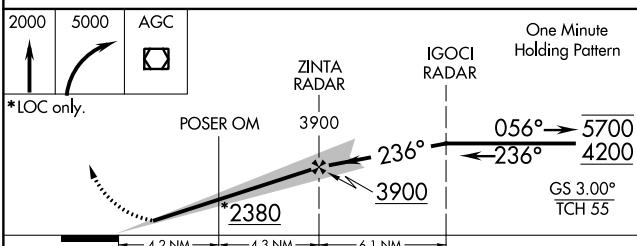
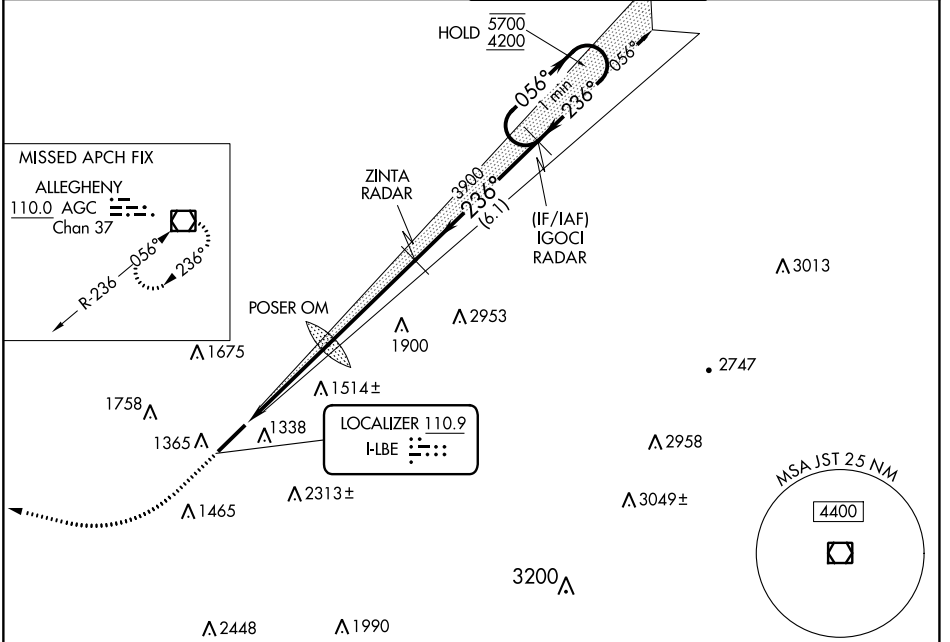
RNAV 1-GPS or RADAR required for procedure entry.
From IGOCI: RNAV 1-GPS required.
RADAR required.

⚠ Circling NA SE of Rwy 6-24. Inop table does not apply to S-LOC 24 Cats C/D.
⚠ For inop ALS, increase POSER OM minimums S-LOC 24 Cats C/D visibility to 1 3/4 SM.

MALSR **AS**

MISSED APPROACH: Climb to 2000 then climbing right turn to 5000 direct AGC VOR/DME and hold.

ATIS 118.375	JOHNSTOWN APP CON * 121.2 299.2	PALMER TOWER * 125.0 (CTAF)	GND CON 121.8
------------------------	---	---------------------------------------	-------------------------



ELEV 1199	TDZE 1145
-----------	-----------

Diagram details: Runway 24 with 1.4% DOWN slope. Tower (TWR) at 1223 ft. REIL Rwy 6, HIRL Rwy 6-24.

FAF to MAP 8.5 NM					
Knots	60	90	120	150	180
Min:Sec	8:30	5:40	4:15	3:24	2:50

CATEGORY	A	B	C	D
S-ILS 24	1345-1/2 200 (200-1/2)			
S-LOC 24	2380-3/4 1235 (1200-3/4)	2380-1 1235 (1200-1)	2380-3	1235 (1200-3)
C CIRCLING	2380-1/4 1181 (1200-1/4)	2380-1 1/2 1181 (1200-1 1/2)	2380-3	1181 (1200-3)
POSER OM MINIMUMS				
S-LOC 24	1760-1/2	615 (600-1/2)	1760-1 3/8	615 (600-1 3/8)
C CIRCLING	1760-1 561 (600-1)	1780-1 581 (600-1)	2060-2 1/2 861 (900-2 1/2)	2060-2 3/4 861 (900-2 3/4)

NE-4, 11 JUL 2024 to 08 AUG 2024

NE-4, 11 JUL 2024 to 08 AUG 2024