

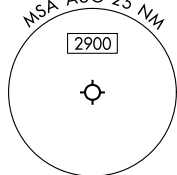
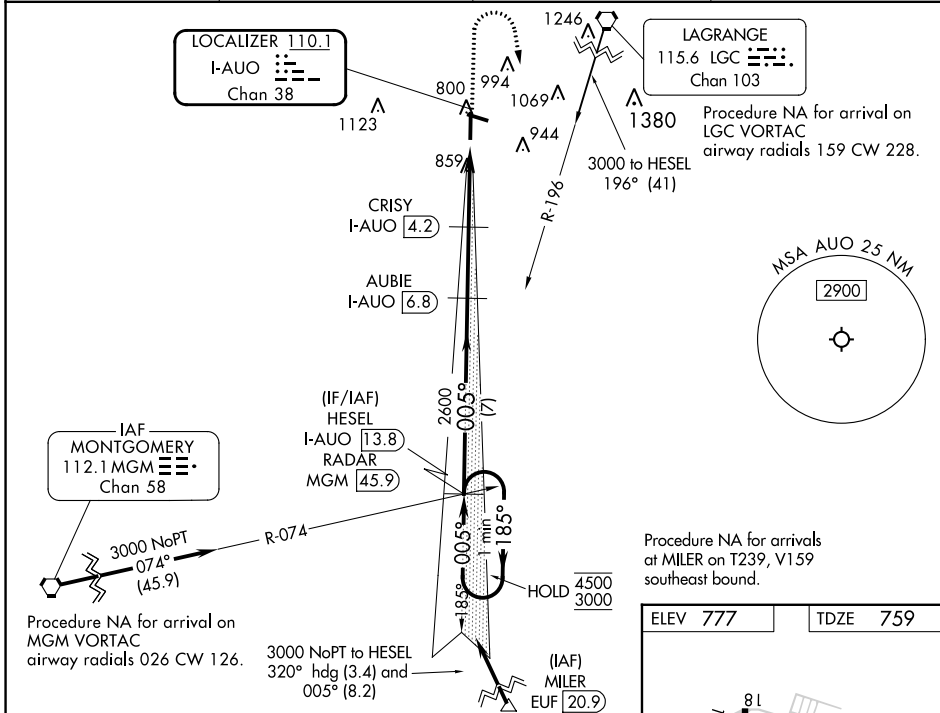
LOC/DME I-AUO 110.1 Chan 38	APP CRS 005°	Rwy Idg 5264 TDZE 759 Apt Elev 777
---	------------------------	---

ILS or LOC RWY 36

AUBURN UNIVERSITY RGNL (AUO)

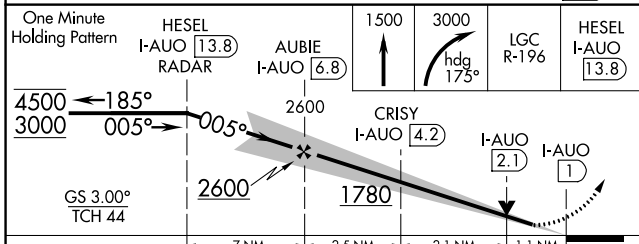
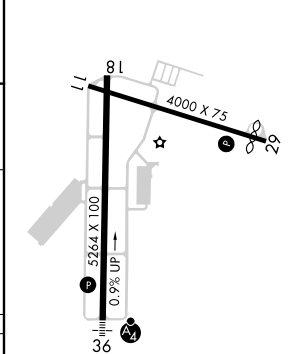
DME required.	MALSF	MISSED APPROACH: Climb to 1500 then climbing right turn to 3000 on heading 175° and on LGC VORTAC R-196 to HESEL/I-AUO 13.8 DME/RADAR and hold.
<p>⚠ Inop table does not apply to S-ILS 36 all Cats.</p>		

AWOS-3PT 132.575	ATLANTA APP CON ★ 125.5 323.1	CLNC DEL 118.7	UNICOM 123.0 (CTAF) ①
----------------------------	---	--------------------------	--



Procedure NA for arrivals at MILER on T239, V159 southeast bound.

ELEV 777	TDZE 759
----------	----------



CATEGORY	A	B	C	D
S-ILS 36		959-3/4	200 (200-3/4)	
S-LOC 36		1120-3/4	361 (400-3/4)	
CIRCLING	1240-1 463 (500-1)	1360-1 583 (600-1)	1380-1 3/4 603 (700-1 3/4)	1440-2 663 (700-2)

FAF to MAP 5.7 NM					
Knots	60	90	120	150	180
Min:Sec	5:42	3:48	2:51	2:17	1:54

SE-4, 11 JUL 2024 to 08 AUG 2024

SE-4, 11 JUL 2024 to 08 AUG 2024