


LOC/DME I-RLU 110.5 Chan 42	APP CRS 047°	Rwy Idg 5500 TDZE 309 Apt Elev 333
--	------------------------	---

ILS or LOC/DME RWY 5

WATERVILLE RGNL (WVL)

⚠ Night landing; Rwy 14 NA. Helicopter visibility reduction below 3/4 SM NA. VDP NA when using Augusta altimeter setting. When local altimeter setting not received, use Augusta altimeter setting and increase S-ILS 5 DA to 544 feet; increase all MDAs 40 feet and increase S-LOC 5 Cats C/D and Circling Cat D visibility 1/4 SM. Inop table does not apply to S-ILS 5. For inop MALSF, increase S-LOC 5 Cat D visibility to 1 mile. For inop MALSF, when using Augusta altimeter setting, increase S-ILS 5 all Cats visibility to 3/8 mile and S-LOC 5 Cat C/D visibility to 1 1/8 mile. Autopilot coupled approach NA below 600.

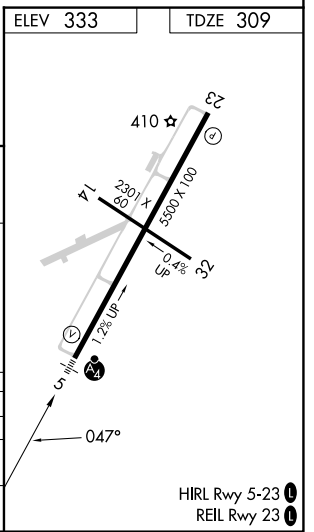
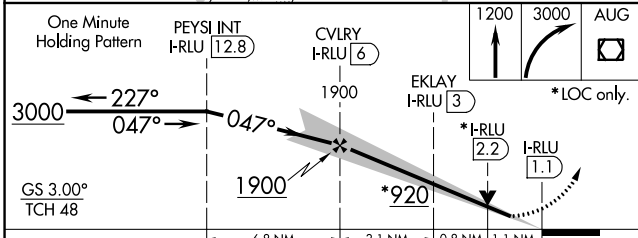
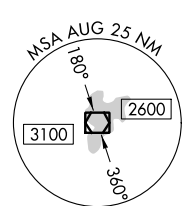
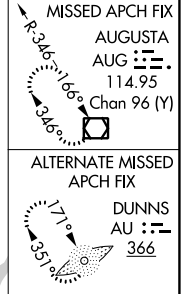
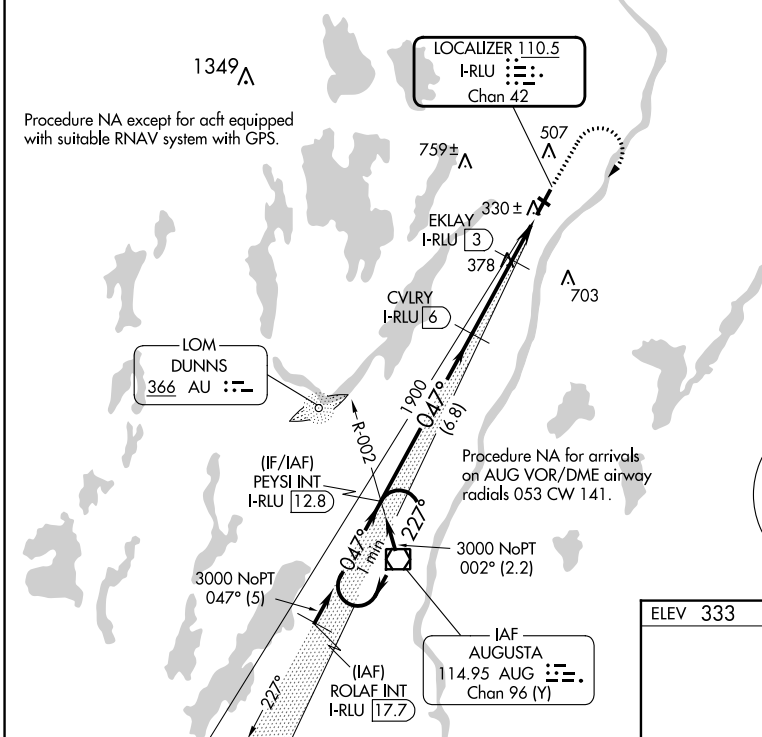
MALSF

MISSED APPROACH:
 Climb to 1200 then climbing right turn to 3000 direct AUG VOR/DME and hold.

AWOS-3PT
118.375

PORTLAND APP CON ★
128.35 299.2

CLNC DEL
124.6 299.2

UNICOM
122.7 (CTAF) 0



CATEGORY	A	B	C	D
S-ILS 5		509-3/4 200 (200-3/4)		
S-LOC 5		680-3/4 371 (400-3/4)		
CIRCLING	860-1 527 (600-1)		1100-2 1/4 767 (800-2 1/4)	1120-2 1/2 787 (800-2 1/2)

NE-1, 11 JUL 2024 to 08 AUG 2024

NE-1, 11 JUL 2024 to 08 AUG 2024