

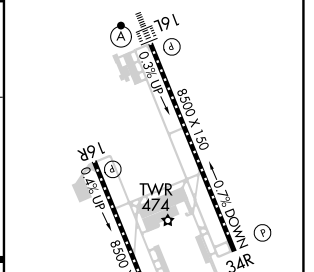
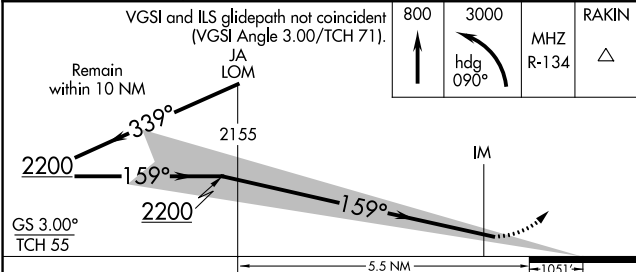
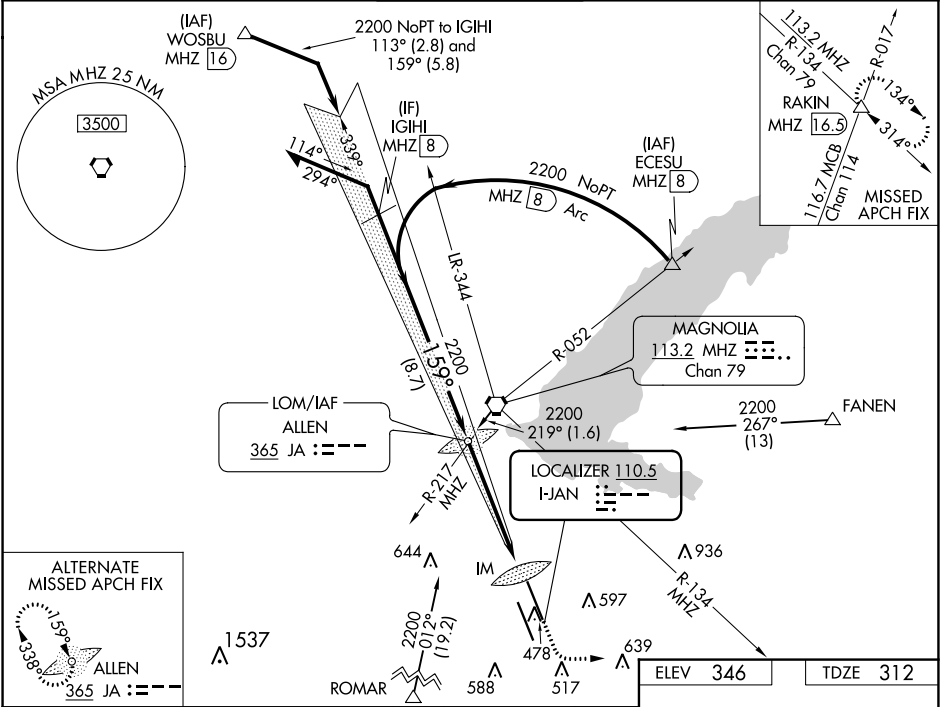
LOC I-JAN 110.5	APP CRS 159°	Rwy Idg 8500
		TDZE 312
		Apt Elev 346

ILS RWY 16L (CAT II & III)

JACKSON-MEDGAR WILEY EVERS INTL (JAN)

<p>When control tower closed, procedure NA.</p> <p>When local altimeter setting not received, procedure NA.</p> <p>ASR</p>	<p>ALSF-2</p>	<p>MISSED APPROACH: Climb to 800 then climbing left turn to 3000 on heading 090° and MHz VORTAC R-134 to RAKIN INT/MHZ 16.5 DME and hold.</p>
--	---------------	---

<p>ATIS 121.05</p>	<p>JACKSON APP CON * 123.9 317.7</p>	<p>JACKSON TOWER * 120.9 (CTAF) 0 352.0</p>	<p>GND CON 121.7 348.6</p>	<p>UNICOM 122.95</p>
-------------------------------	---	--	---------------------------------------	---------------------------------



CATEGORY	A	B	C	D
S-ILS 16L		CAT II RA 119/12 100 DA 412		
S-ILS 16L		CAT IIIA RVR 07		
S-ILS 16L		CAT IIIB RVR 06		
S-ILS 16L		CAT IIIC NA		

CATEGORY II & III ILS - SPECIAL AIRCREW & AIRCRAFT CERTIFICATION REQUIRED

REIL Rwy 16R and 34R
HIRL Rwy 16L-34R and 16R-34L

SC-4, 11 JUL 2024 to 08 AUG 2024

SC-4, 11 JUL 2024 to 08 AUG 2024