

VORTAC MHz <b>113.2</b> Chan <b>79</b>	APP CRS <b>349°</b>	Rwy Idg TDZE Apt Elev	<b>8500</b> <b>346</b> <b>346</b>
--	------------------------	-----------------------------	---

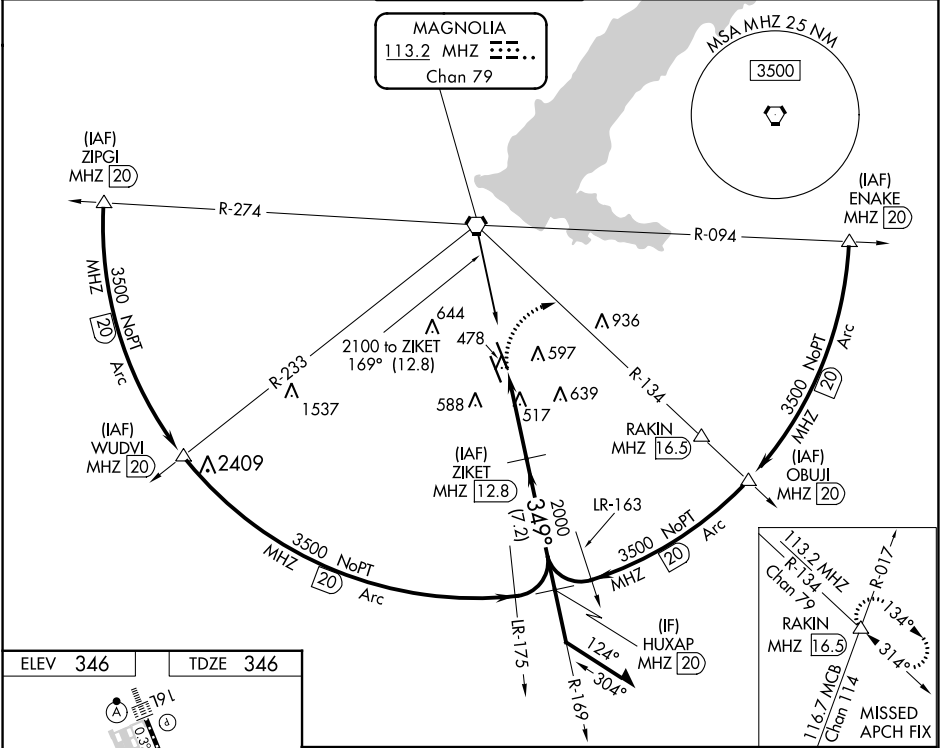
# VOR/DME or TACAN RWY 34R

JACKSON-MEDGAR WILEY EVERS INTL (JAN)

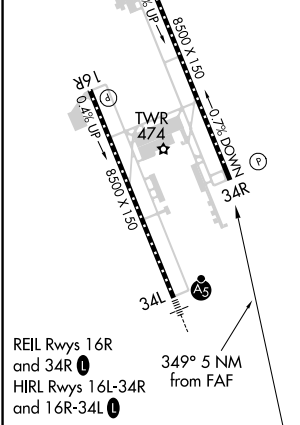
⚠ When local altimeter setting not received, use Hawkins fld altimeter setting and increase all MDA 20 feet; increase S-34R Cats C/D/E visibility 1/8 mile. Circling NA for Cat E southwest of Rwy 16R-34L. Helicopter visibility reduction below 3/8 SM NA.

MISSED APPROACH: Climbing right turn to 3000 on heading 120° and MHz VORTAC R-134 to RAKIN INT/ MHz 16.5 DME and hold.

ATIS <b>121.05</b>	JACKSON APP CON* <b>123.9 317.7</b>	JACKSON TOWER* <b>120.9 (CTAF) 352.0</b>	GND CON <b>121.7 348.6</b>	UNICOM <b>122.95</b>
-----------------------	--	---	-------------------------------	-------------------------



ELEV 346	TDZE 346
----------	----------



JACKSON, MISSISSIPPI  
Orig-B 17SEP15

32°19'N-90°05'W

3000	hdg 120°	MHz R-134	RAKIN	△	ZIKET MHz 12.8	Remain within 15 NM
				169°	2100	
				349°	2000	
				2.99°	TCH 66	
				5 NM		
CATEGORY	A	B	C	D	E	
S-34R	920/55	574 (600-1)	920-1 5/8	574 (600-1 5/8)		
CIRCLING	920-1	574 (600-1)	920-1 1/2	960-2	1040-2 1/2	
			574 (600-1 1/2)	614 (700-2)	694 (700-2 1/2)	

# JACKSON-MEDGAR WILEY EVERS INTL (JAN)

## VOR/DME or TACAN RWY 34R

SC-4, 11 JUL 2024 to 08 AUG 2024

SC-4, 11 JUL 2024 to 08 AUG 2024