

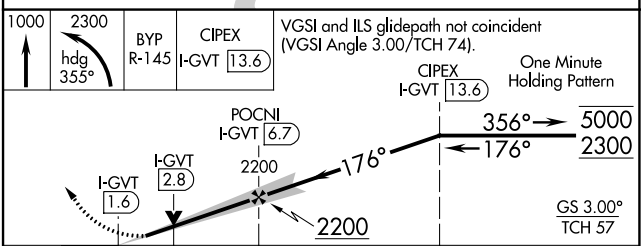
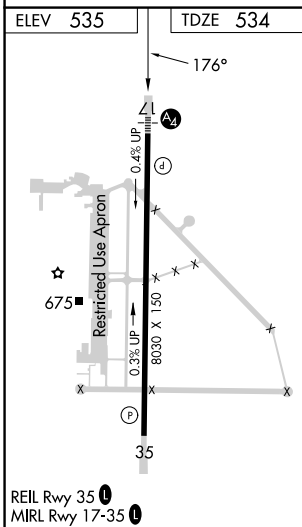
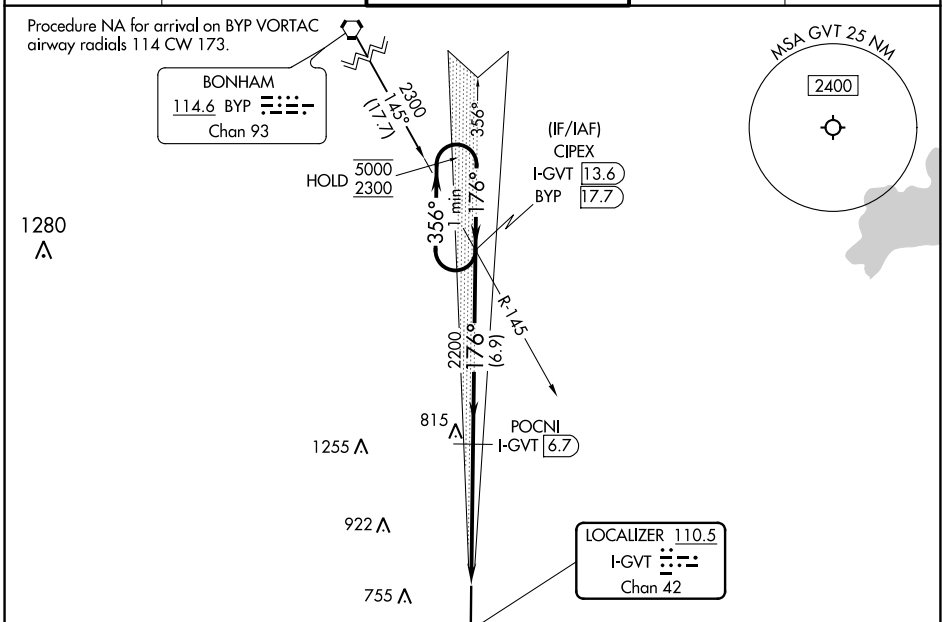
LOC/DME I-GVT <b>110.5</b> Chan <b>42</b>	APP CRS <b>176°</b>	Rwy Idg <b>8030</b> TDZE <b>534</b> Apt Elev <b>535</b>
-------------------------------------------------	------------------------	---------------------------------------------------------------

# ILS Z or LOC Z RWY 17

MAJORS (GVT)

DME required.	MALS	MISSED APPROACH: Climb to 1000 then climbing left turn to 2300 on heading 355° and BYP VORTAC R-145 to CIPEX/I-GVT 13.6 DME and hold.
<p><b>▼</b> Inop table does not apply to S-ILS 17 all Cats and S-LOC 17 Cats A/B.</p> <p><b>▲</b> For inop ALS, increase S-LOC 17 Cat E visibility to 1 3/8 SM. Autopilot coupled approach NA below 900 feet.</p>		

AWOS-3 <b>133.425</b>	FORT WORTH CENTER <b>132.025 360.75</b>	MAJORS TOWER ★ <b>118.65 (CTAF) 0 385.425</b>	GND CON <b>121.7 335.8</b>	UNICOM <b>122.95</b>
--------------------------	--------------------------------------------	--------------------------------------------------	-------------------------------	-------------------------



CATEGORY	A	B	C	D	E
S-ILS 17	734-1		200 (200-1)		
S-LOC 17	1000-1	466 (500-1)	1000-1 1/8		466 (500-1 1/8)
<b>C</b> CIRCLING	1000-1 465 (500-1)	1060-1 525 (600-1)	1060-1 1/2 525 (600-1 1/2)	1240-2 1/4 705 (800-2 1/4)	1300-2 3/4 765 (800-2 3/4)

SC-2, 11 JUL 2024 to 08 AUG 2024

SC-2, 11 JUL 2024 to 08 AUG 2024