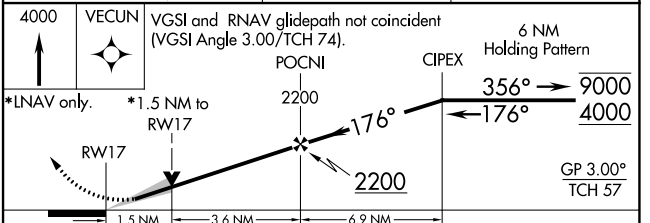
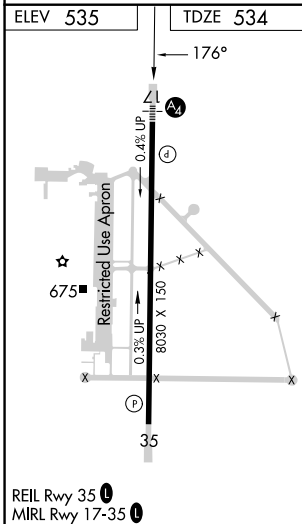
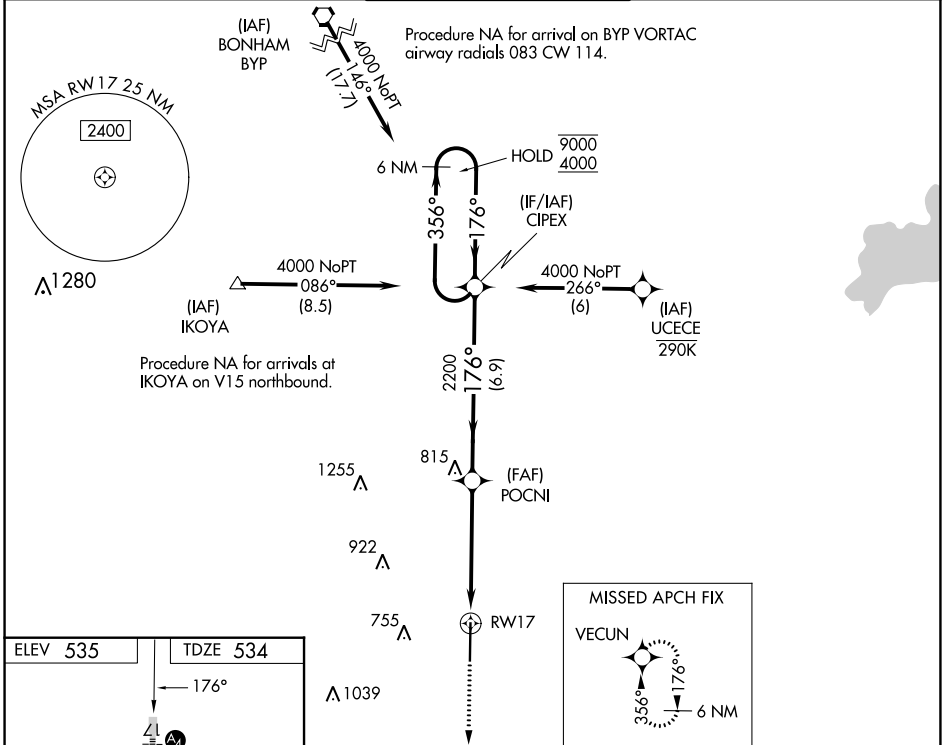


WAAS CH 86205 W17A	APP CRS 176°	Rwy Idg TDZE Apt Elev	8030 534 535
---------------------------------	------------------------	-----------------------------	---

RNAV (GPS) RWY 17

MAJORS (GVT)

RNP APCH.		MAJORS TOWER ★ 118.65 (CTAF) 0 385.425		GND CON 121.7 335.8	UNICOM 122.95
<p>⚠ Inop table does not apply to LPV and LNAV/VNAV all Cats and LNAV Cats A and B. For uncompensated Baro-VNAV systems, LNAV/VNAV NA below -16°C or above 54°C. For inop ALS, increase LNAV Cat E visibility to 1½ SM.</p>		MALS		MISSED APPROACH: Climb to 4000 direct VECUN and hold, continue climb-in hold to 4000.	



CATEGORY	A	B	C	D	E
LPV DA	734-1 200 (200-1)				
LNAV/VNAV DA	832-1 298 (300-1)				
LNAV MDA	1060-1 526 (600-1)	1060-1¼ 526 (600-1¼)			
CIRCLING	1060-1 525 (600-1)	1060-1½ 525 (600-1½)	1240-2¼ 705 (800-2¼)	1300-2¾ 765 (800-2¾)	

SC-2, 11 JUL 2024 to 08 AUG 2024

SC-2, 11 JUL 2024 to 08 AUG 2024