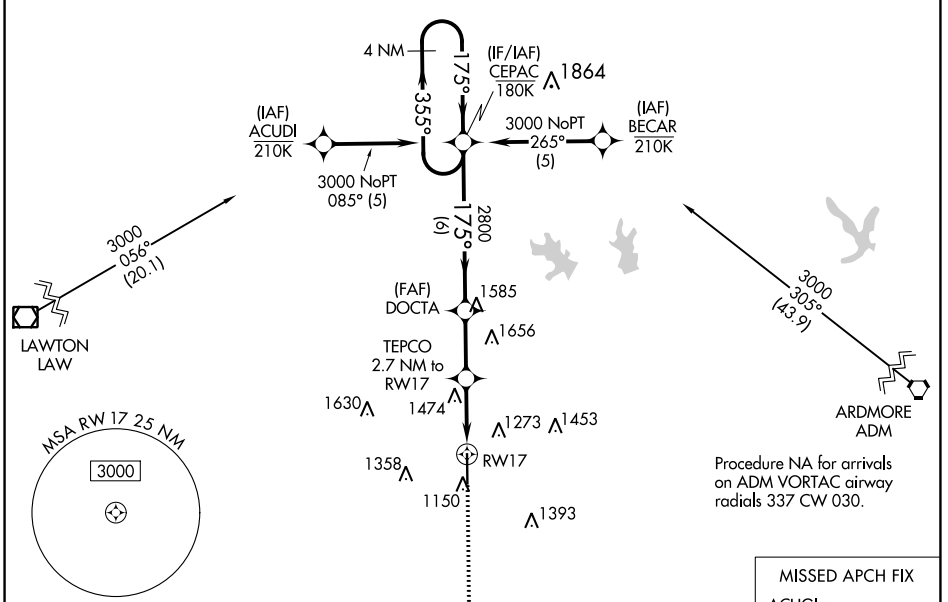


WAAS CH 93619 W17A	APP CRS 175°	Rwy Idg 6325 TDZE 1114 Apt Elev 1114
--	------------------------	---

RNAV (GPS) RWY 17

HALLIBURTON FLD (DUC)

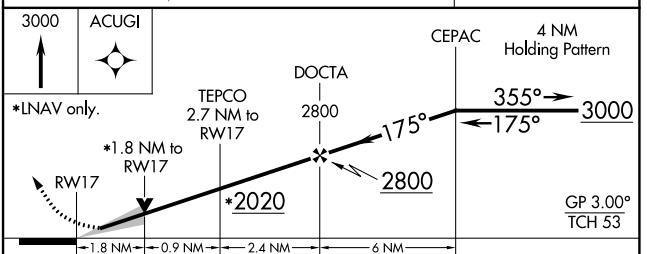
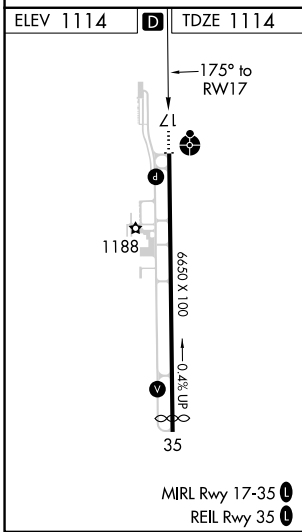
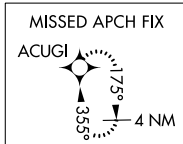
RNP APCH. For uncompensated Baro-VNAV systems, LNAV/VNAV NA below -17°C or above 54°C. Inop table does not apply to LPV all Cats, LNAV/VNAV all Cats, LNAV Cats C/D.		ODALS 	MISSED APPROACH: Climb to 3000 direct ACUGI and hold.
AWOS-3 119.075	FORT SILL APP CON 118.6 290.375	CLNC DEL 118.4	UNICOM 122.8 (CTAF) 0



SC-1, 11 JUL 2024 to 08 AUG 2024

SC-1, 11 JUL 2024 to 08 AUG 2024

Procedure NA for arrivals on ADM VORTAC airway radials 337 CW 030.



CATEGORY	A	B	C	D
LPV DA		1314-3/4	200 (200-3/4)	
LNAV/VNAV DA		1806-2 1/2	692 (700-2 1/2)	
LNAV MDA	1740-3/4	626 (700-3/4)	1740-1 3/4	626 (700-1 3/4)
CIRCLING	1740-1	626 (700-1)	1780-1 3/4	1780-2
			666 (700-1 3/4)	666 (700-2)