

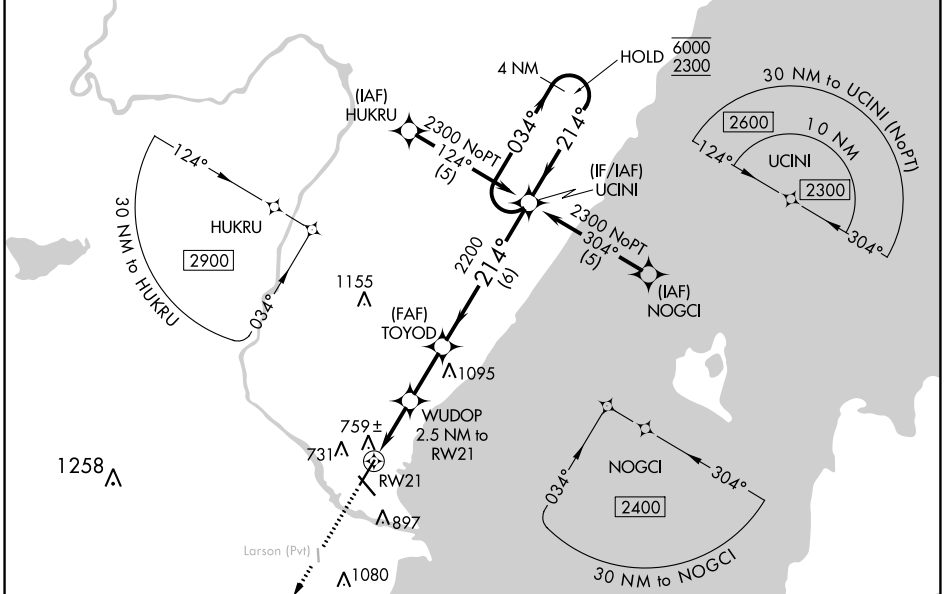
APP CRS	Rwy ldg	5999
214°	TDZE	625
	Apt Elev	625

RNAV (GPS) RWY 21

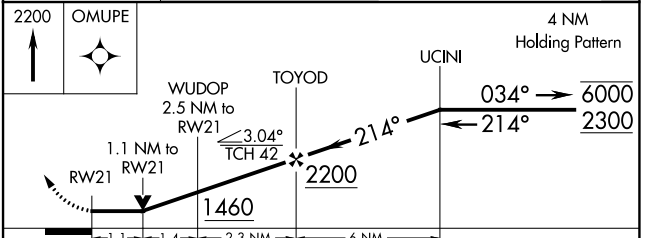
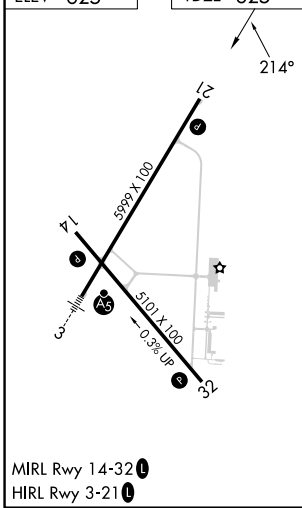
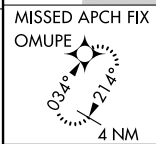
MENOMINEE RGNL (MNM)

RNP APCH.	<p>⚠ Circling Rwy 14, 32 NA at night. Rwy 21 helicopter visibility reduction below 3/4 SM NA. VDP NA when using Sturgeon Bay altimeter setting. When local altimeter setting not received, use Sturgeon Bay altimeter setting and increase all MDA 60 feet, increase LNAV Cat C/D and Circling Cat C/D visibility 1/4 SM.</p>	<p>MISSED APPROACH: Climb to 2200 direct OMUPE and hold.</p>
-----------	---	--

AWOS-3PT 121.45	GREEN BAY APP CON * 120.3 338.2	UNICOM 122.8 (CTAF) 0
---------------------------	---	---------------------------------



ELEV 625	TDZE 625
----------	----------



CATEGORY	A	B	C	D
LNAV MDA	1020-1	395 (400-1)	1020-1½	395 (400-1½)
C CIRCLING	1200-1	575 (600-1)	1200-1½	1380-2½
			575 (600-1½)	755 (800-2½)

EC-1, 11 JUL 2024 to 08 AUG 2024

EC-1, 11 JUL 2024 to 08 AUG 2024