


VOR/DME SWO 108.4 Chan 21	APP CRS 178°	Rwy Idg 7401 TDZE 1000 Apt Elev 1000
----------------------------------------	------------------------	-----------------------------------------------------------------

VOR RWY 17

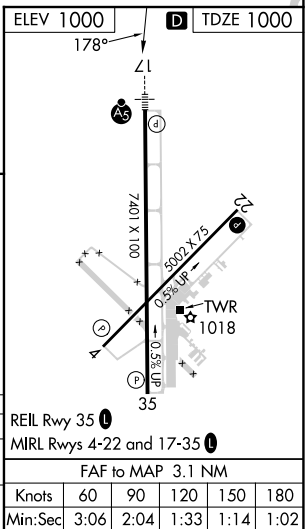
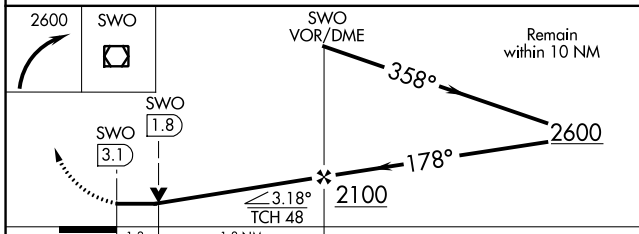
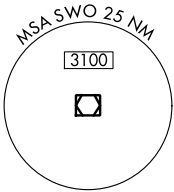
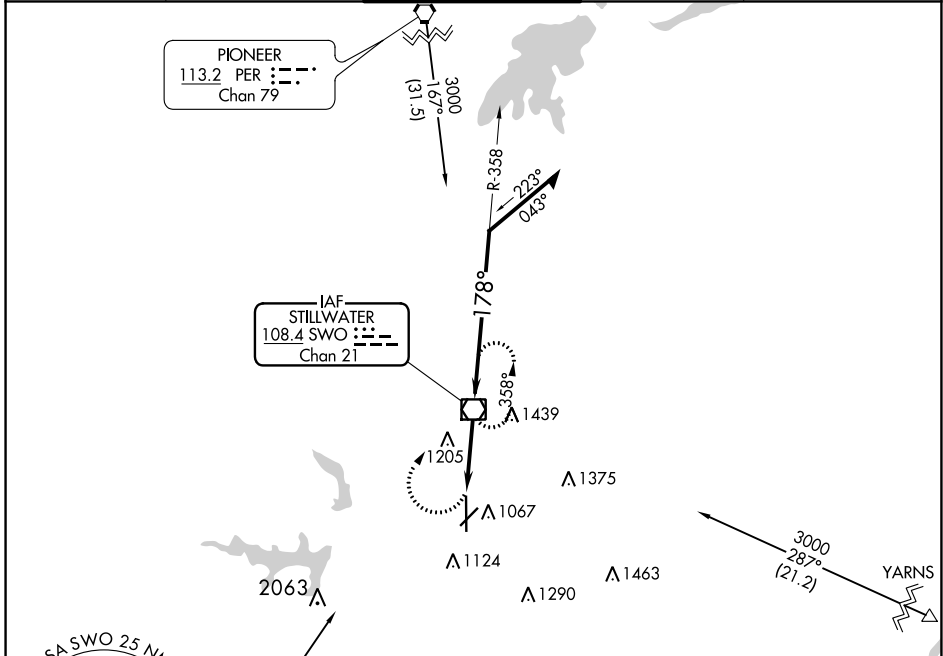
STILLWATER RGNL (SWO)


⚠ When local altimeter setting not received, use Ponca City Rgnl altimeter setting and increase all MDA 80 feet and Circling Cat D visibility ½ mile. VDP NA with Ponca City altimeter setting. For inop MALSRS increase S-17 Cats A/B visibility to 1 mile. Helicopter visibility reduction below ¾ SM NA.

MALSRS 

MISSED APPROACH: Climbing right turn to 2600 direct SWO VOR/DME and hold.

ASOS 135.725	KANSAS CITY CENTER 127.8 319.1	STILLWATER TOWER ★ 125.35 (CTAF) 0	GND CON 121.6	UNICOM 122.95
------------------------	------------------------------------------	-----------------------------------------------------	-------------------------	-------------------------



CATEGORY	A	B	C	D
S-17	1460-¾ 460 (500-¾)			1460-1 460 (500-1)
 CIRCLING	1460-1 460 (500-1)	1520-1½ 520 (600-1½)		1740-2¼ 740 (800-2¼)

SC-1, 11 JUL 2024 to 08 AUG 2024

SC-1, 11 JUL 2024 to 08 AUG 2024