

LOC/DME I-BJI <b>109.35</b> Chan 30 (Y)	APP CRS <b>253°</b>	Rwy Idg TDZE Apt Elev	<b>5700</b> <b>1389</b> <b>1391</b>
---	------------------------	-----------------------------	---

# ILS or LOC RWY 25

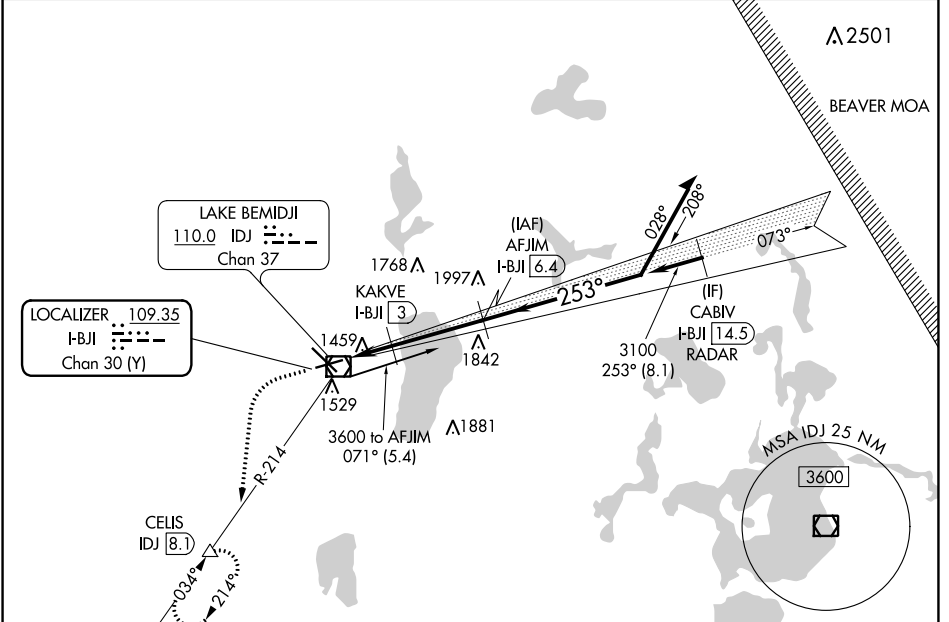
BEMIDJI RGNL (BJI)

DME required. RADAR required for procedure entry.

**▲** NA

MISSED APPROACH: Climb to 2300 then climbing left turn to 3400 on heading 185° and IDJ VOR/DME R-214 to CELIS/IDJ VOR/DME 8.1 DME and hold, continue climb-in-hold to 3400.

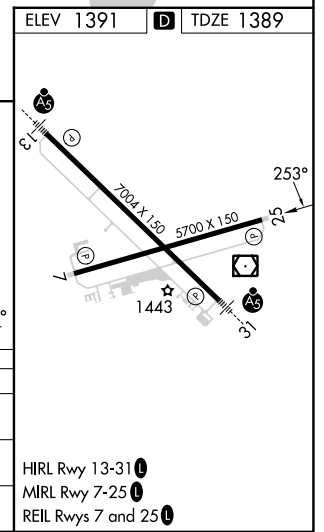
AWOS-3 <b>119.275</b>	MINNEAPOLIS CENTER <b>134.75 251.1</b>	UNICOM <b>122.8 (CTAF)</b>
--------------------------	---	-------------------------------



NC-1, 11 JUL 2024 to 08 AUG 2024

NC-1, 11 JUL 2024 to 08 AUG 2024

ELEV 1391	<b>D</b>	TDZE 1389
2300	3400	↑
hdg 185°	IDJ R-214	CELIS ▲
*LOC only	AFJIM I-BJI (6.4)	Use I-BJI DME when on the localizer course.
	3100	Remain within 10 NM
	2020*	073°
	2020*	253°
	0.9 NM	0.9 NM
	3.4 NM	
CATEGORY	A	B
S-ILS 25	1589-¾	200 (200-¾)
S-LOC 25	1720-1	331 (400-1)
<b>C</b> CIRCLING	1840-1 449 (500-1)	1860-1 469 (500-1)
	1860-1½ 469 (500-1½)	1960-2 569 (600-2)



HIRL Rwy 13-31  
MRL Rwy 7-25  
REIL Rws 7 and 25