

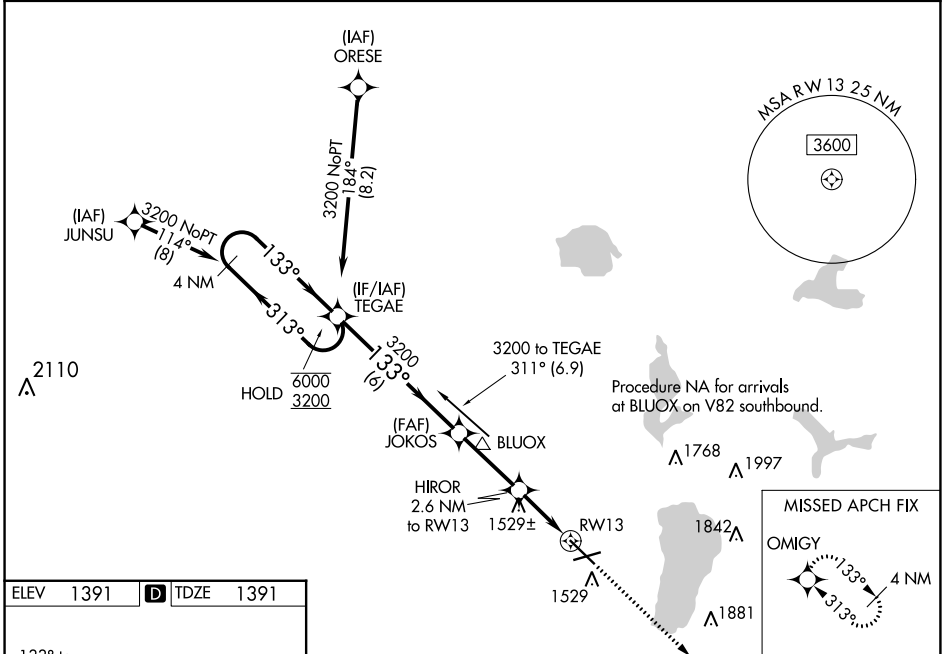
WAAS CH 93636 W13A	APP CRS 133°	Rwy Idg TDZE Apt Elev	7002 1391 1391
--	------------------------	-----------------------------	---

RNAV (GPS) RWY 13

BEMIDJI RGNL (BJI)

RNP APCH.	MALS R	MISSED APPROACH: Climb to 3200 direct OMIGY and hold.
<p>▼</p> <p>▲ For uncompensated Baro-VNAV systems, LNAV/VNAV NA below -17°C or above 54°C. For inop ALS increase LNAV/VNAV visibility all Cats to ¾ SM, increase LNAV Cats A and B visibility to 1 SM and Cats C and D visibility to 1½ SM.</p>		

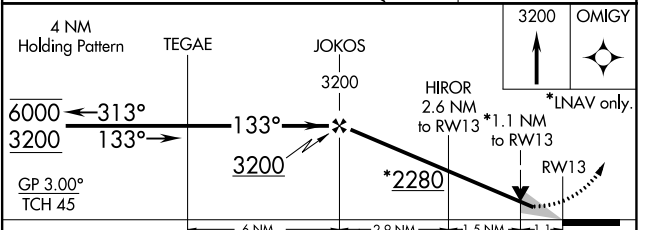
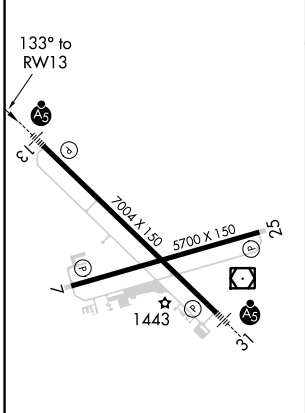
AWOS-3 119.275	MINNEAPOLIS CENTER 134.75 251.1	UNICOM 122.8 (CTAF) 0
--------------------------	---	---------------------------------



NC-1, 11 JUL 2024 to 08 AUG 2024

NC-1, 11 JUL 2024 to 08 AUG 2024

ELEV 1391	D TDZE 1391
-----------	--------------------



CATEGORY	A	B	C	D
LPV DA		1648-¾	257 (300-¾)	
LNAV/VNAV DA		1680-¾	289 (300-¾)	
LNAV MDA		1780-¾	389 (400-¾)	
C CIRCLING	1840-1 449 (500-1)	1860-1 469 (500-1)	1860-1½ 469 (500-1½)	1960-2 569 (600-2)

- HIRL Rwy 13-31
- MIRL Rwy 7-25
- REIL Rws 7 and 25