

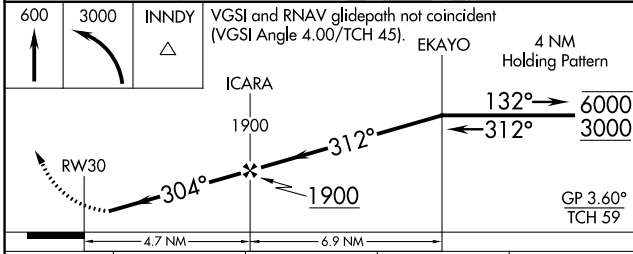
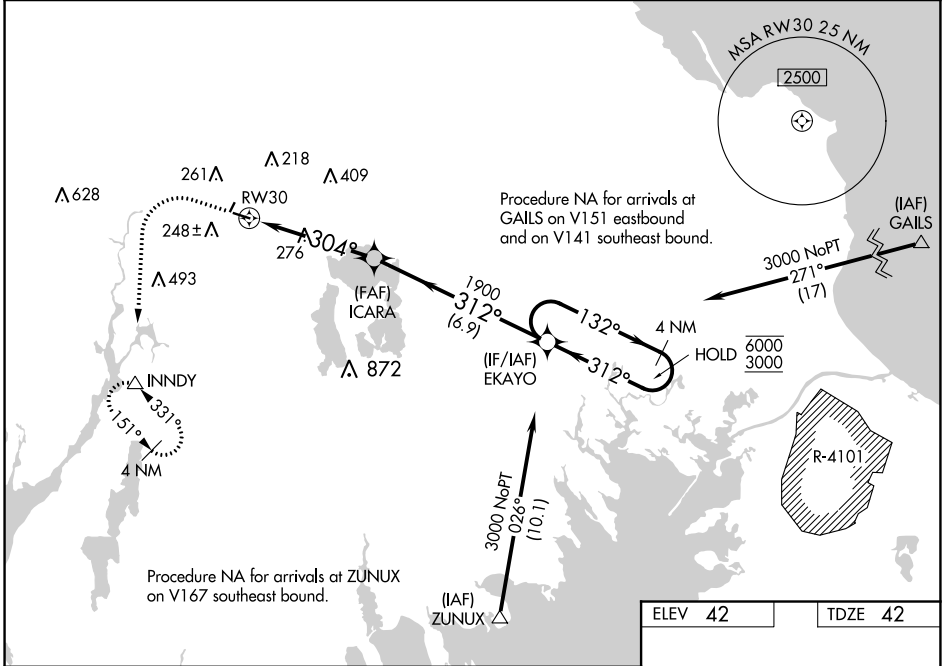
WAAS CH 58139 W30A	APP CRS 304°	Rwy Idg TDZE Apt Elev	3500 42 42
--	------------------------	-----------------------------	---------------------------------------

RNAV (GPS) RWY 30

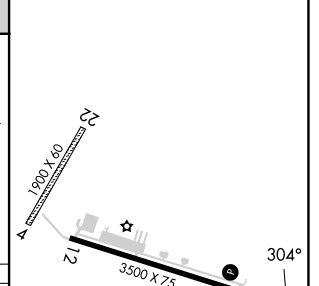
TAUNTON MUNI - KING FLD (TAN)

RNP APCH.	MISSED APPROACH: (Do not exceed 210K until INNDY) Climb to 600 then climbing left turn to 3000 direct INNDY and hold. Continue climb in hold to 3000.
<p>▽ Circling NA to Rws 4 and 22. Rwy 30 helicopter visibility reduction below 1 SM NA. For uncompensated Baro-VNAV systems, LNAV/VNAV NA below -23°C or above 46°C.</p>	

ASOS 132.675	PROVIDENCE APP CON * 128.7 269.525	UNICOM 122.7 (CTAF) 0
------------------------	--	---------------------------------



ELEV 42	TDZE 42
---------	---------



CATEGORY	A	B	C	D
LPV DA	388-1	346 (400-1)		NA
LNAV/VNAV DA	526-1 $\frac{3}{8}$	484 (500-1 $\frac{1}{2}$)		NA
LNAV MDA	600-1	558 (600-1)	600-1 $\frac{1}{2}$ 558 (600-1 $\frac{1}{2}$)	NA
C CIRCLING	600-1	558 (600-1)	660-1 $\frac{3}{4}$ 618 (700-1 $\frac{3}{4}$)	NA

REIL Rwy 30
MIRL Rwy 12-30 0

NE-1, 11 JUL 2024 to 08 AUG 2024

NE-1, 11 JUL 2024 to 08 AUG 2024