

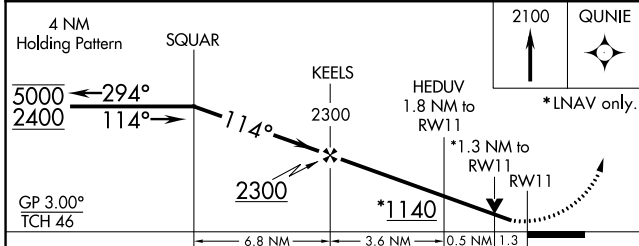
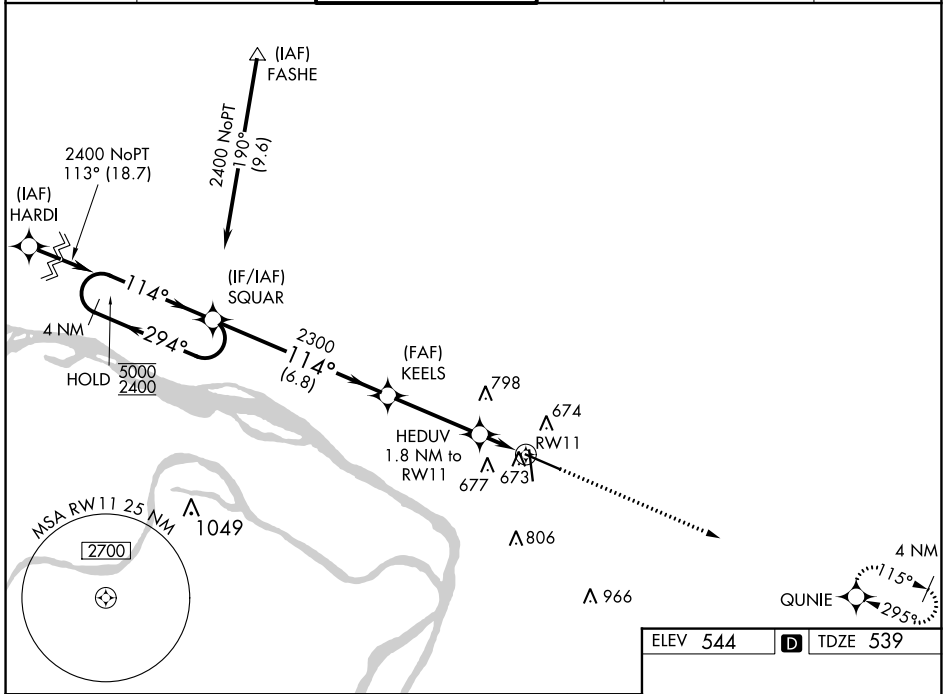
WAAS CH <b>90417</b> <b>W11A</b>	APP CRS <b>114°</b>	Rwy Idg TDZE Apt Elev	<b>8099</b> <b>539</b> <b>544</b>
--	------------------------	-----------------------------	---

# RNAV (GPS) RWY 11

ST LOUIS RGNL (A.L.N)

RNP APCH.		MISSED APPROACH: Climb to 2100 direct QUNIE and hold.
<p>▼ Rwy 11 helicopter visibility reduction below ¼ SM NA. ▲ For uncompensated Baro-VNAV systems, LNAV/VNAV NA below -16°C or above 54°C.</p>		

ATIS <b>128.0</b>	ST LOUIS APP CON <b>124.2 353.9</b>	REGIONAL TOWER* <b>126.0(CTAF) 239.0</b>	GND CON <b>120.2</b>	CLNC DEL <b>120.2</b> (when tower closed)	UNICOM <b>122.95</b>
----------------------	--	---	-------------------------	---	-------------------------



ELEV 544	TDZE 539
----------	----------

REIL Rwy 11  
HIRL Rwy 11-29  
MIRL Rwy 17-35

CATEGORY	A	B	C	D
LPV DA		794-7/8	255 (300-7/8)	
LNAV/VNAV DA		881-1 1/8	342 (400-1 1/8)	
LNAV MDA	980-1	441 (500-1)	980-1 3/8	441 (500-1 3/8)
CIRCLING	1000-1	456 (500-1)	1160-1 3/4	1200-2
			616 (700-1 3/4)	656 (700-2)

EC-3, 11 JUL 2024 to 08 AUG 2024

EC-3, 11 JUL 2024 to 08 AUG 2024