

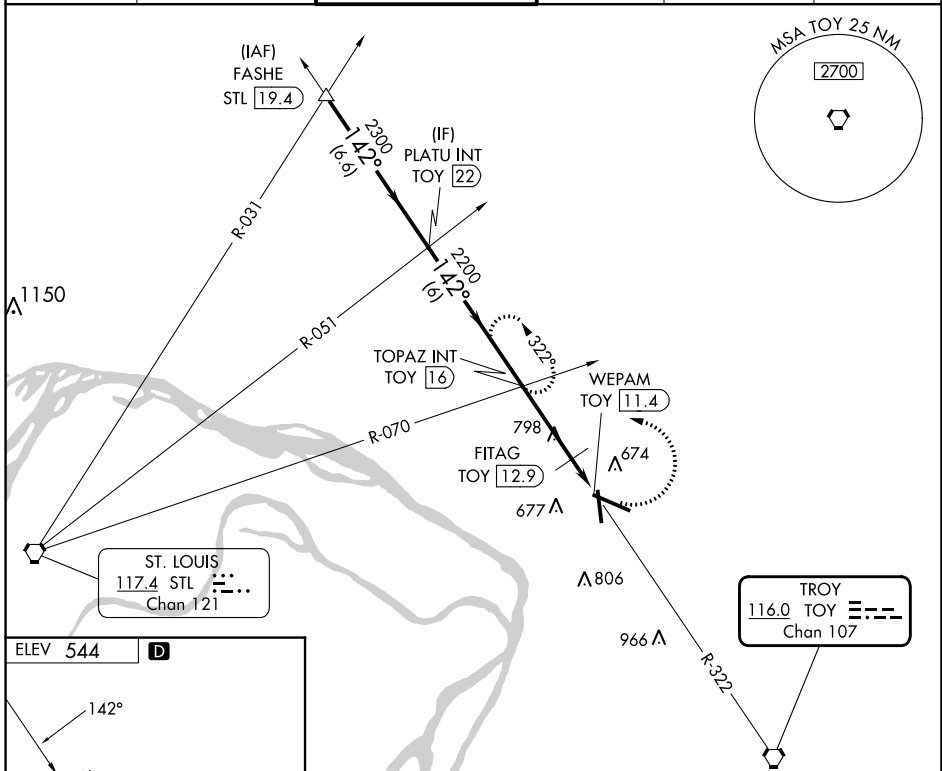
VORTAC TOY 116.0 Chan 107	APP CRS 142°	Rwy Idg TDZE Apt Elev	N/A N/A 544
---	------------------------	-----------------------------	--

VOR-A
ST LOUIS RGNL (A.L.N)

⚠ When local altimeter setting not received, use St Louis Lambert Intl altimeter setting and increase all MDA 60 feet and increase Circling Cat C/D visibility ¼ SM. When VGSi inop, Circling to Rwy 17/35 NA at night.

MISSED APPROACH: Climbing left turn to 2200 via TOY R-322 to TOPAZ INT/TOY 16 DME and hold.

ATIS 128.0	ST LOUIS APP CON 124.2 353.9	REGIONAL TOWER* 126.0 (CTAF) 0 239.0	GND CON 120.2	CLNC DEL 120.2 (when tower closed)	UNICOM 122.95
----------------------	--	--	-------------------------	---	-------------------------



EC-3, 11 JUL 2024 to 08 AUG 2024

EC-3, 11 JUL 2024 to 08 AUG 2024

ELEV 544 **D**

ST. LOUIS
117.4 STL
Chan 121

REIL Rwy 11 **Ⓛ**
HIRL Rwy 11-29 **Ⓛ**
MIRL Rwy 17-35 **Ⓛ**

FAF to MAP 4.6 NM

Knots	60	90	120	150	180
Min:Sec	4:36	3:04	2:18	1:50	1:32

	FASHE STL 19.4 2700	*1160 when using St Louis Lambert Intl altimeter setting.	2200	TOPAZ INT
	PLATU INT TOY 22	TOPAZ INT TOY 16	FITAG TOY 12.9	WEPAM TOY 11.4
Procedure Turn	NA			
	6.6 NM	6 NM	3.2 NM	1.4 NM
CATEGORY	A	B	C	D
CIRCLING	1100-1	556 (600-1)	1160-1¾ 616 (700-1¾)	1200-2 656 (700-2)
	FITAG FIX MINIMUMS			
CIRCLING	1000-1	456 (500-1)	1160-1¾ 616 (700-1¾)	1200-2 656 (700-2)