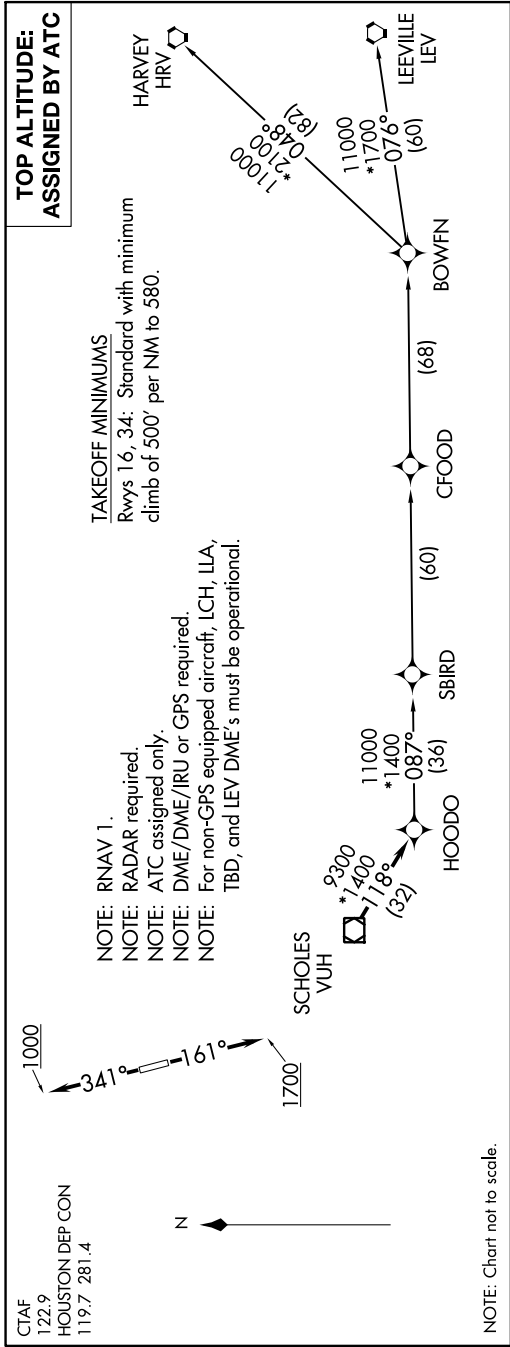


SC-5, 11 JUL 2024 to 08 AUG 2024



CTAF  
 122.9  
 HOUSTON DEP CON  
 119.7 281.4

- NOTE: RNAV 1.
- NOTE: RADAR required.
- NOTE: ATC assigned only.
- NOTE: DME/DME/IRU or GPS required.
- NOTE: For non-GPS equipped aircraft, LCH, ILLA, TBD, and LEV DME's must be operational.

TAKEOFF MINIMUMS  
 Rwy's 16, 34: Standard with minimum  
 climb of 500' per NM to 580.

TOP ALTITUDE:  
 ASSIGNED BY ATC

NOTE: Chart not to scale.



DEPARTURE ROUTE DESCRIPTION

- TAKEOFF RUNWAY 16: Climb on heading 161° to 1700, for RADAR vectors to VUH VOR/DME, thence . . . .
- TAKEOFF RUNWAY 34: Climb on heading 341° to 1000, for RADAR vectors to VUH VOR/DME, thence . . . .
- . . . . on track 118° to HOODO, then on (transition). Maintain ATC assigned altitude.
- Expect filed altitude 10 minutes after departure.

- BOWFN TRANSITION (HOODO7.BOWFN)
- CFOOD TRANSITION (HOODO7.CFOOD)
- HARVEY TRANSITION (HOODO7.HRV)
- LEVILE TRANSITION (HOODO7.LEV)
- SBIRD TRANSITION (HOODO7.SBIRD)

SC-5, 11 JUL 2024 to 08 AUG 2024