

WAAS CH 78130 W16A	APP CRS 161°	Rwy Idg TDZE Apt Elev	3801 70 70
--	------------------------	-----------------------------	---------------------------------------

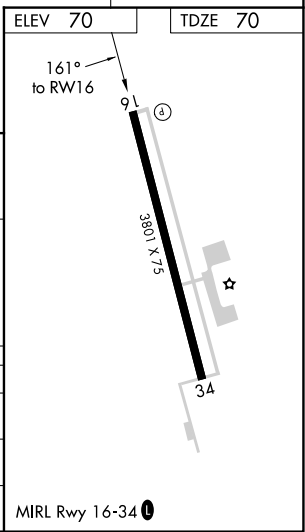
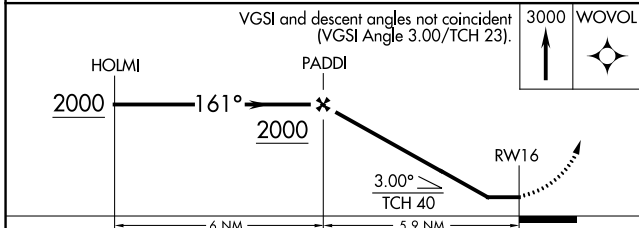
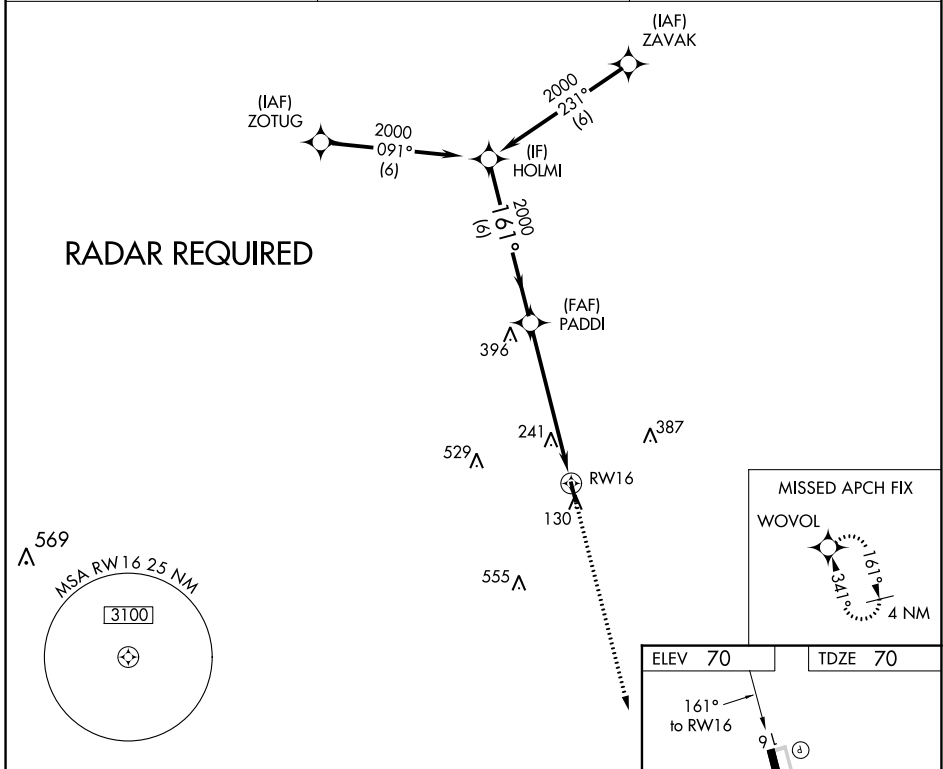
RNAV (GPS) RWY 16

LIBERTY MUNI (T78)

Procedure NA at night. Use George Bush Intcntl/Houston altimeter setting. DME/DME RNP-0.3 NA.
Helicopter visibility reduction below 1 SM NA.

MISSED APPROACH: Climb to 3000 direct WOVOL and hold.

AWOS-3PT 120.775	HOUSTON APP CON 119.7 281.4	CTAF 122.9
----------------------------	---------------------------------------	----------------------



	6 NM		5.9 NM	
CATEGORY	A	B	C	D
IP MDA	620-1	550 (600-1)	NA	
RNAV MDA	640-1	570 (600-1)	NA	
CIRCLING	640-1	570 (600-1)	NA	

SC-5, 11 JUL 2024 to 08 AUG 2024

SC-5, 11 JUL 2024 to 08 AUG 2024

MIRL Rwy 16-34