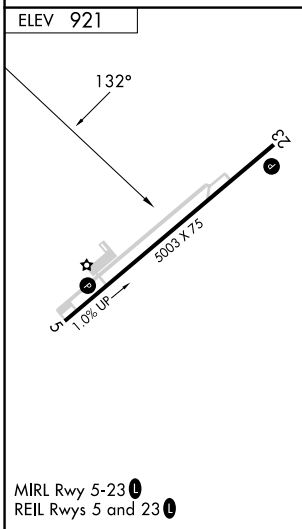
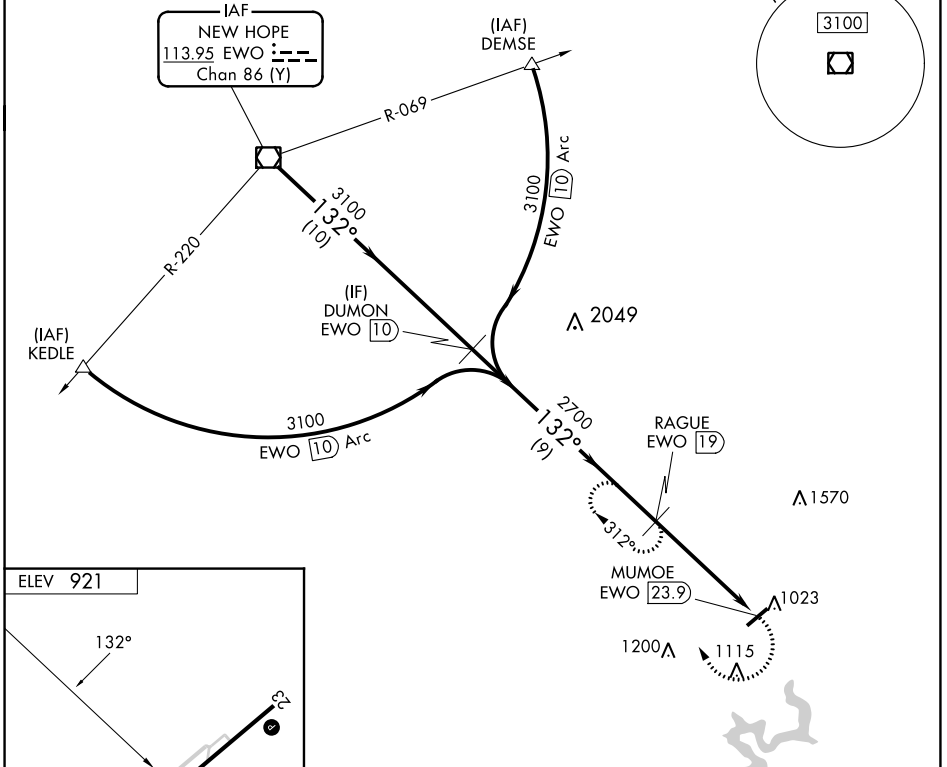
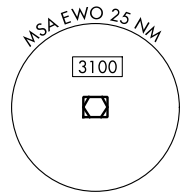


VOR/DME EWO 113.95 Chan 86 (Y)	APP CRS 132°	Rwy Idg TDZE Apt Elev N/A N/A 921
---	------------------------	---

VOR/DME-A
TAYLOR COUNTY (AAS)

<p>NA When local altimeter setting not received, use Somerset altimeter setting: increase all MDA 100 feet; increase Cat C visibility 1/4 mile and Cat D visibility 1/2 mile.</p>	<p>MISSED APPROACH: Climbing right turn to 3100 on heading 360° and on EWO R-132 to RAGUE/19 DME and hold.</p>	
<p>AWOS-3 121.125</p>	<p>INDIANAPOLIS CENTER 121.175 353.65</p>	<p>UNICOM 122.7 (CTAF)</p>

DME REQUIRED



	EWO VOR/DME 3100	DUMON EWO 10 3100	RAGUE EWO 19 2700	MUMOE EWO 23.9 1023
	10 NM	9 NM	4.9 NM	
CATEGORY	A	B	C	D
C CIRCLING	1540-1	619 (700-1)	1540-1 3/4 619 (700-1 3/4)	1660-2 1/4 739 (800-2 1/4)

SE-1, 11 JUL 2024 to 08 AUG 2024

SE-1, 11 JUL 2024 to 08 AUG 2024