

| | | |
|--|------------------------|---|
| VOR/DME IWD 108.8 Chan 25 | APP CRS 079° | Rwy ldg TDZE 1230 Apt Elev 1230 |
|--|------------------------|---|

VOR RWY 9

GOGEBIC/IRON COUNTY (IWD)

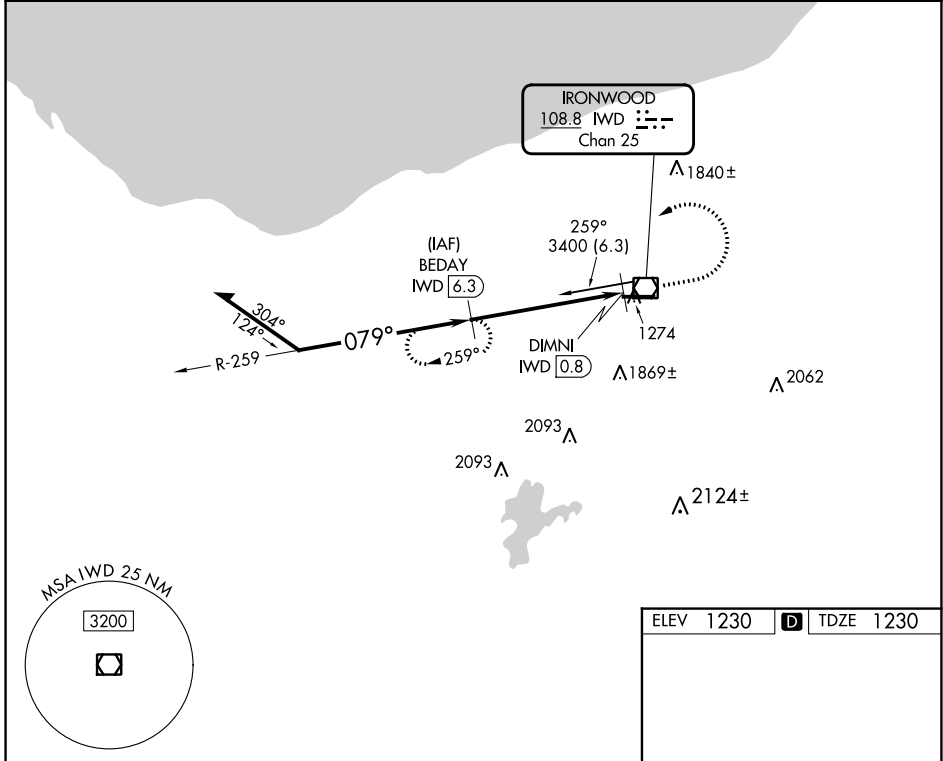
DME required.

⚠ Rwy 9 helicopter visibility reduction below 1 SM NA. When local altimeter setting not received, use Ashland altimeter setting: increase all MDA 140 feet and S-9 Cat C visibility ¼ SM, Cat D visibility ½ SM and Circling Cat B visibility ¼ SM.

⚠ -27°C

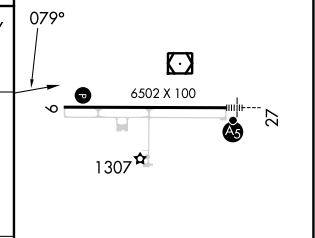
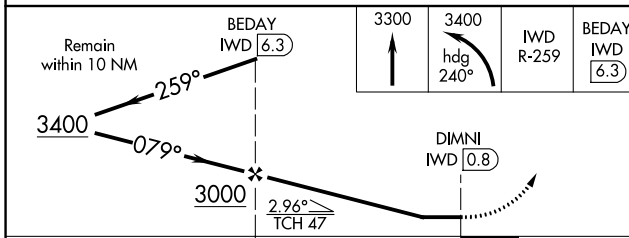
MISSED APPROACH: Climb to 3300 then climbing left turn to 3400 on heading 240° and IWD R-259 to BEDAY/6.3 DME and hold.

| | | |
|----------------------------|-------------------------------------|-------------------------------|
| AWOS-3PT 125.175 | MINNEAPOLIS CENTER 133.55 | UNICOM 122.8 (CTAF) |
|----------------------------|-------------------------------------|-------------------------------|



EC-1, 11 JUL 2024 to 08 AUG 2024

EC-1, 11 JUL 2024 to 08 AUG 2024



| CATEGORY | A | B | C | D |
|----------|---------|--------------|------------------------|------------------------|
| S-9 | 1740-1 | 510 (600-1) | 1740-1½ | 510 (600-1½) |
| CIRCLING | 2100-1¼ | 870 (900-1¼) | 2200-3 970 (1000-3) | 2220-3 990 (1000-3) |

ELEV 1230 **D** TDZE 1230

REIL Rwy 9 **①**
HIRL Rwy 9-27 **①**