

WAAS CH <b>57904</b> <b>W20A</b>	APP CRS <b>202°</b>	Rwy Idg TDZE Apt Elev	<b>8012</b> <b>468</b> <b>472</b>
--	------------------------	-----------------------------	---

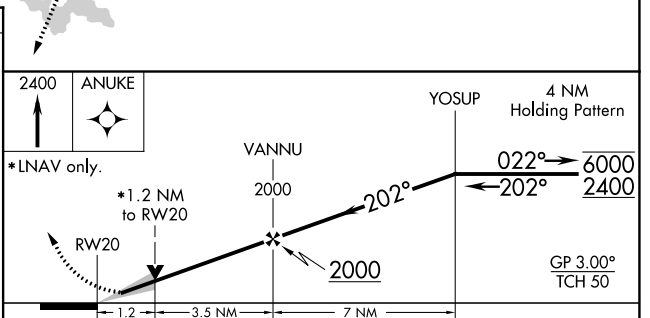
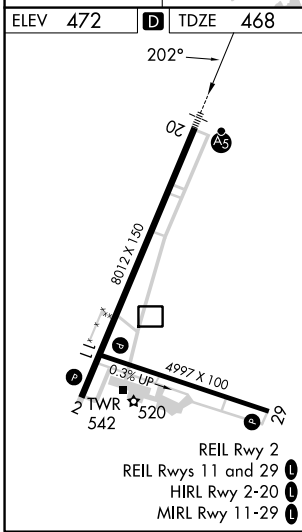
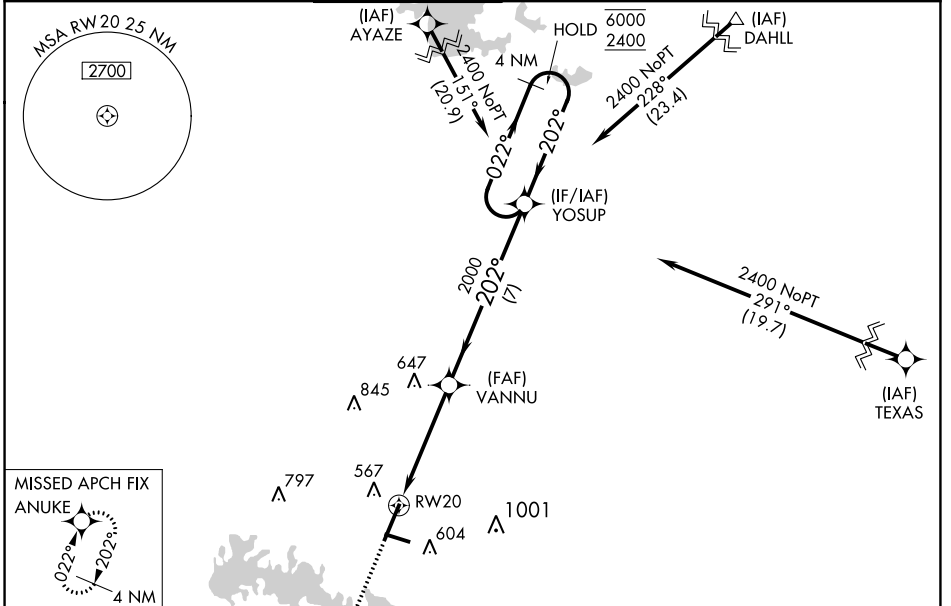
# RNAV (GPS) RWY 20

VETERANS AIRPORT OF SOUTHERN ILLINOIS (MWA)

RNP APCH.		MARION TOWER ★		CLNC DEL	GND CON	UNICOM
<p>⚠ Circling Rwy 11 NA at night. For uncompensated Baro-VNAV systems, LNAV/VNAV NA below -15° C or above 54° C. For inop ALS, increase LNAV/VNAV all Cats visibility to 7/8 SM and LNAV Cats C/D visibility to 1 1/8 SM.</p>		<p><b>128.4</b> (CTAF) </p>		<p><b>127.475</b> (When twr closed)</p>	<b>121.7</b>	<b>122.95</b>
AWOS-3PT	KANSAS CITY CENTER					
<b>119.675</b>	<b>127.475 346.275</b>					

MALSR

MISSED APPROACH:  
Climb to 2400 direct ANUKE and hold.



CATEGORY	A	B	C	D
LPV DA		668-1/2	200 (200-1/2)	
LNAV/VNAV DA		773-1/2	305 (400-1/2)	
LNAV MDA	880-1/2	412 (500-1/2)	880-3/4	412 (500-3/4)
CIRCLING	920-1 448 (500-1)	940-1 468 (500-1)	1040-1 1/2 568 (600-1 1/2)	1340-2 3/4 868 (900-2 3/4)