

VOR/DME HSI 108.8 Chan 25	APP CRS 314°	Rwy Idg TDZE 1944 Apt Elev 1961
---	------------------------	---

VOR RWY 32

HASTINGS MUNI (HSI)

⚠ When VGSJ inop, procedure NA at night. Visibility reduction by helicopters NA.
⚠ When local altimeter setting not received, use Grand Island altimeter setting and increase all MDAs 80 feet and Cat C/D visibility ¼ SM. Circling NA for Cat D east of Rwy 14/32.

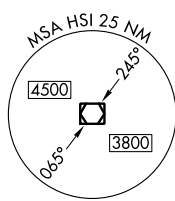
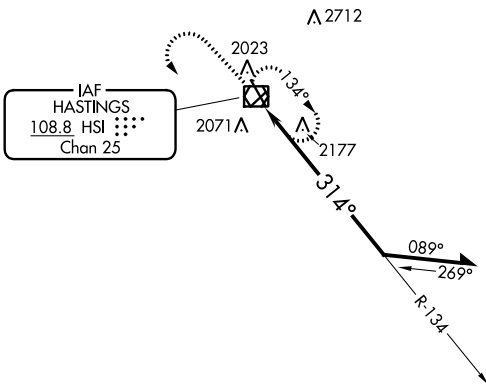
MISSED APPROACH: Climb to 3800 then left turn direct HSI VOR/DME and hold.

ASOS
120.525

MINNEAPOLIS CENTER
119.4 278.8

UNICOM
122.8 (CTAF) 0

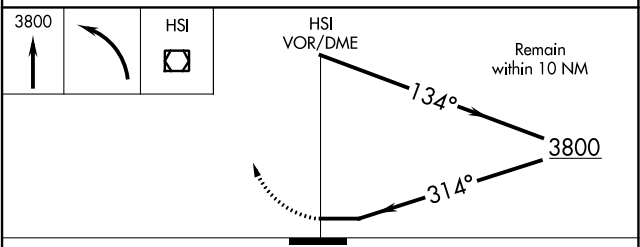
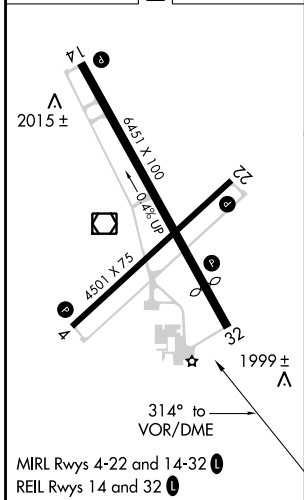
3048 **△**



NC-2, 11 JUL 2024 to 08 AUG 2024

NC-2, 11 JUL 2024 to 08 AUG 2024

ELEV 1961	D	TDZE 1944
-----------	----------	-----------



CATEGORY	A	B	C	D
S-32	2560-1	616 (600-1)	2560-1¾	616 (600-1¾)
CIRCLING	2560-1	599 (600-1)	2560-1¾ 599 (600-1¾)	2560-2 599 (600-2)