

VORTAC BGQ 112.5 Chan 72	APP CRS 096°	Rwy Idg TDZE Apt Elev	2450 162 162
---------------------------------------	------------------------	-----------------------------	---

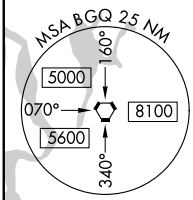
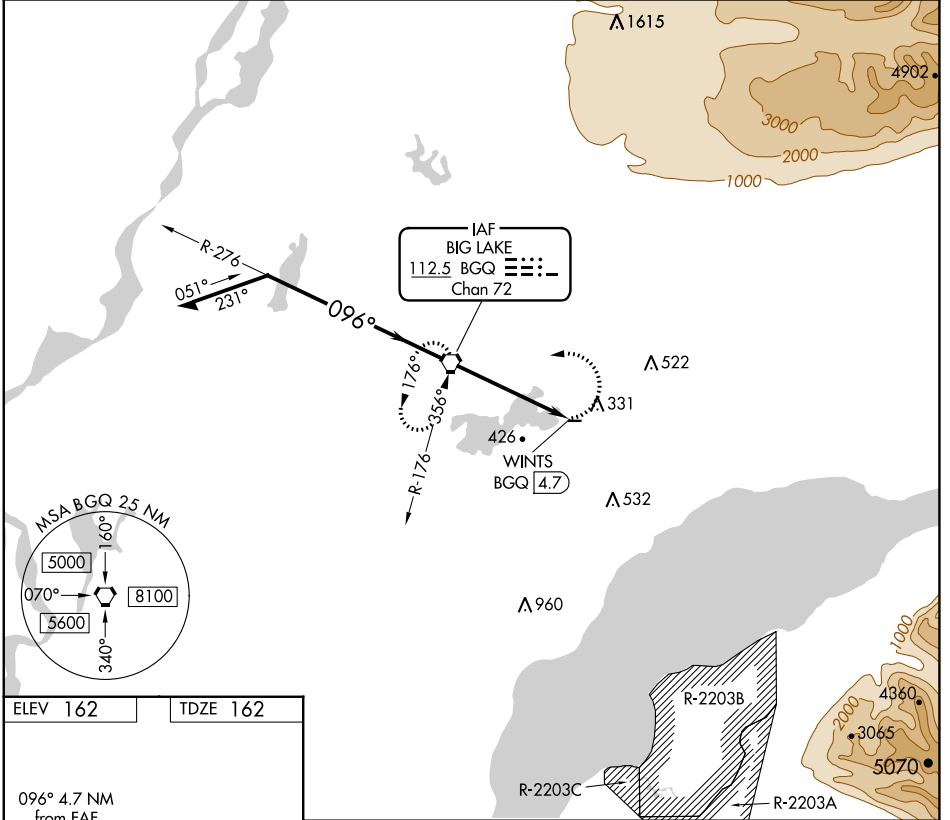
VOR RWY 7

BIG LAKE (BGQ) (PAGQ)

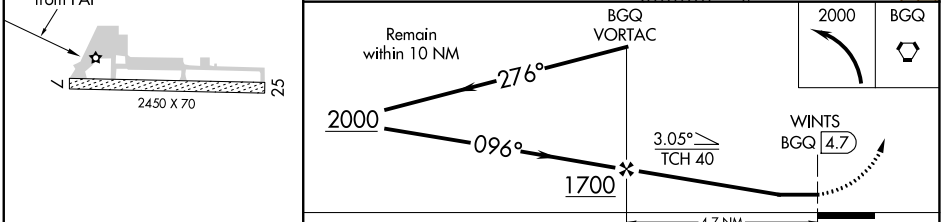
NA Procedure NA at night. Rwy 7 helicopter visibility reduction below 1 SM NA. Use Anchorage altimeter setting.

MISSED APPROACH: Climbing left turn to 2000 direct BGQ VORTAC and hold, climb-in-hold to 2000.

ANC ASOS 135.5	ANCHORAGE APP CON 118.6	CTAF 122.80
--------------------------	-----------------------------------	-----------------------



ELEV 162	TDZE 162
----------	----------



MIRL Rwy 7-25	FAF to MAP 4.7 NM				
Knots	60	90	120	150	180
Min:Sec	4:42	3:08	2:21	1:53	1:34
<input checked="" type="checkbox"/> CIRCLING	980-1 818 (900-1)	980-1 818 (900-1)	980-2 818 (900-2)	980-2 818 (900-2)	NA

AK, 11 JUL 2024 to 05 SEP 2024

AK, 11 JUL 2024 to 05 SEP 2024