

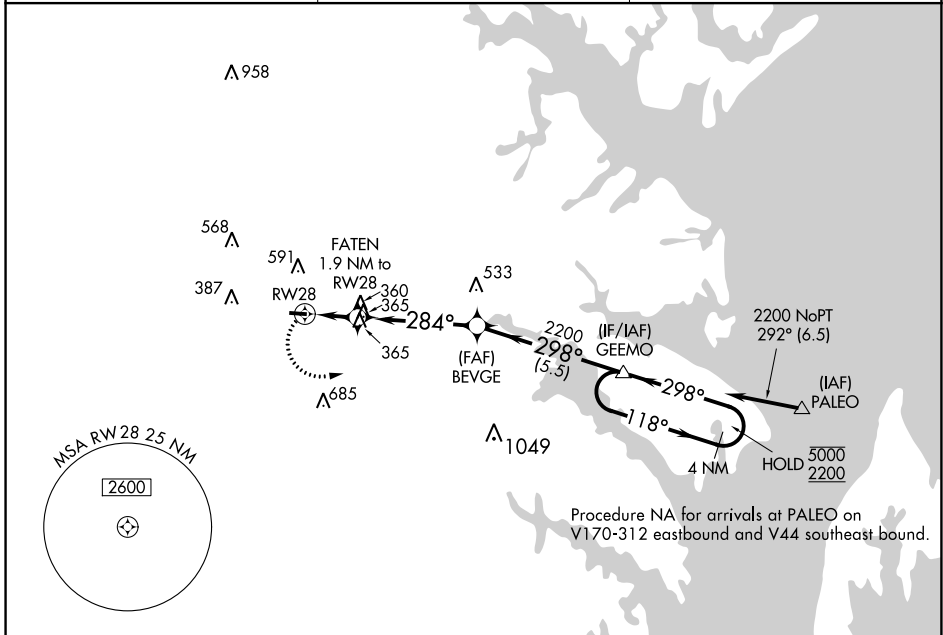
APP CRS 284°	Rwy Idg TDZE Apt Elev	3000 150 150
------------------------	-----------------------------	---

RNAV (GPS) RWY 28

TIPTON (FME)

RNP APCH - GPS.	MISSED APPROACH: Climbing left turn to 2200 direct GEEMO and hold.
<p>▽ ▲ Rwy 28 helicopter visibility reduction below 1 SM NA.</p>	

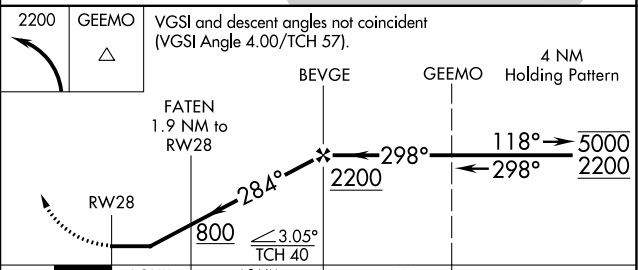
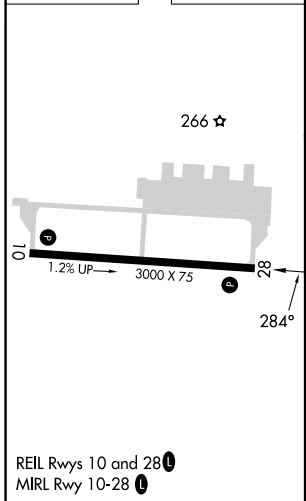
AWOS-3 123.925	POTOMAC APP CON 119.7 290.475	UNICOM 123.05 (CTAF) 0
--------------------------	---	----------------------------------



NE-3, 11 JUL 2024 to 08 AUG 2024

NE-3, 11 JUL 2024 to 08 AUG 2024

ELEV 150	TDZE 150
----------	----------



2200	GEEMO	VGSi and descent angles not coincident (VGSi Angle 4.00/TCH 57).	
BEVGE		4 NM Holding Pattern	
FATEN 1.9 NM to RWY 28		2200	
RWY 28		800	
		≤ 3.05° TCH 40	
		5.5 NM	
CATEGORY	A	B	C
RNAV MDA	620-1	470 (500-1)	NA
CIRCLING	820-1 670 (700-1)	960-1 810 (900-1)	NA