

# RNAV (GPS) RWY 31

APCH CRS	Rwy Idg	6100
312°	THRE	1146
	Arprt Elev	1150

[USA]

RAY S. MILLER AAF (KRYM)

**▼** \* When ALS inop, increase CAT D vis to 1 ¼ miles.  
**▲** NA DME/DME RNP-0.3 NA.

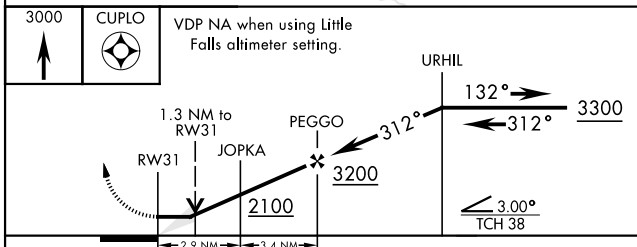
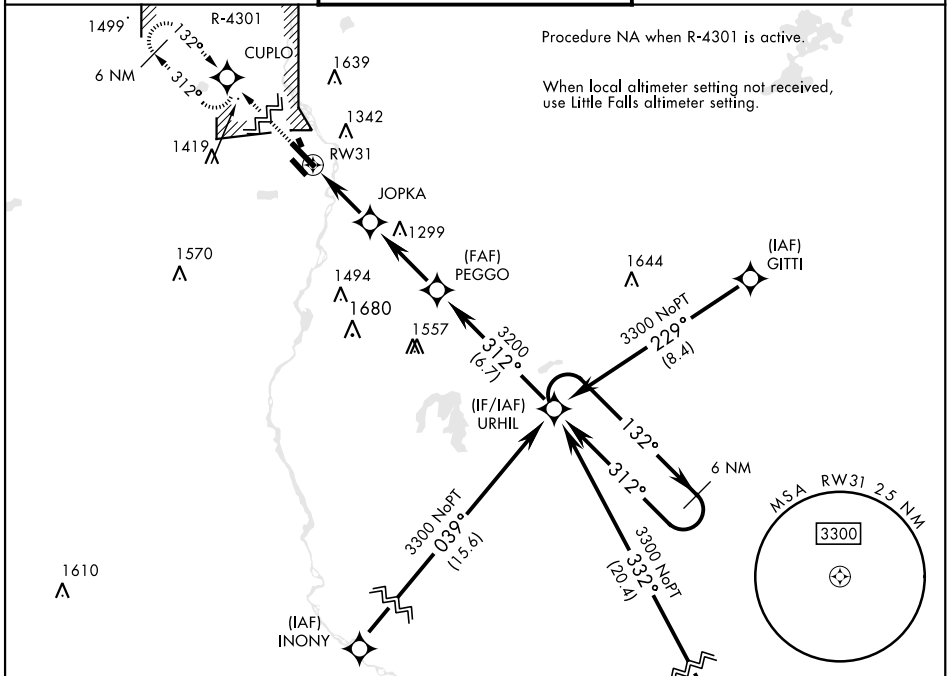


MISSED APPROACH: Climb to 3000 direct CUPLO and hold.

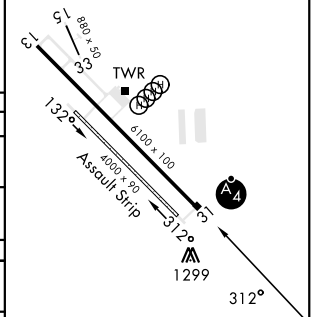
MINNEAPOLIS CENTER  
118.05 239.0

MILLER TOWER ★  
126.2 254.4

CLNC DEL  
126.2



ELEV	1150	THRE	1146
------	------	------	------



CATEGORY	A	B	C	D
RNAV MDA *	1580-¾ 434 (500-¾)	1580-1 434 (500-1)		
<b>C</b> CIRCLING	1640-1 490 (500-1)	1660-1 510 (600-1)	1720-1½ 570 (600-1½)	2080-3 930 (1000-3)
LITTLE FALLS ALTIMETER SETTING				
RNAV MDA *	1620-¾ 474 (500-¾)	1620-1½ 474 (500-1½)		
<b>C</b> CIRCLING	1680-1 530 (600-1)	1760-1¾ 610 (700-1¾)	2120-3 970 (1000-3)	

HIRL Rwy 13-31

# RNAV (GPS) RWY 31

NC-1, 11 JUL 2024 to 08 AUG 2024

NC-1, 11 JUL 2024 to 08 AUG 2024