

WAAS CH 53408 W18A	APP CRS 181°	Rwy Idg TDZE Apt Elev	4016 16 16
--	------------------------	-----------------------------	---------------------------------------

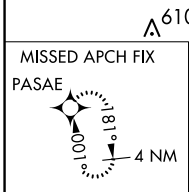
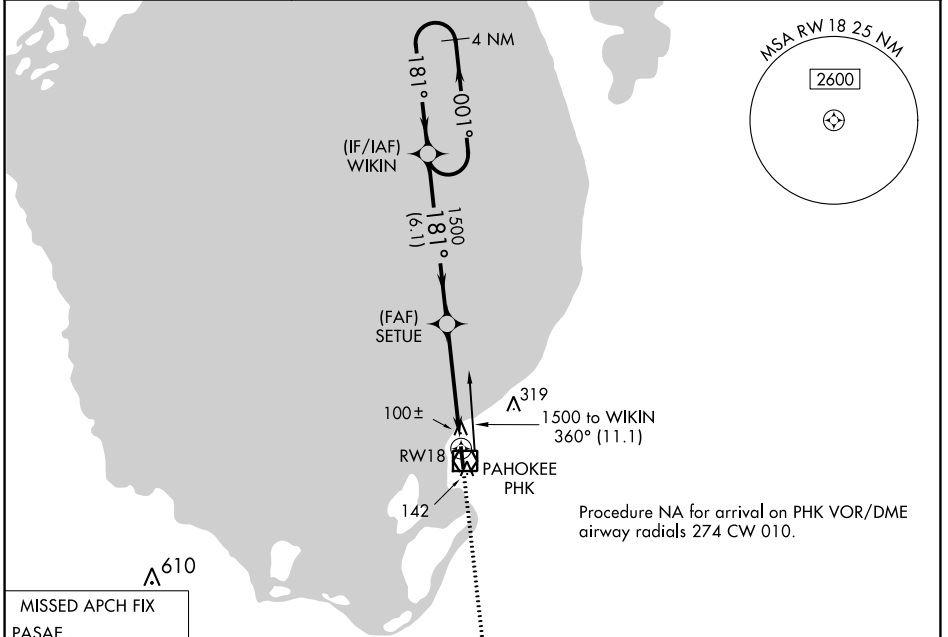
RNAV (GPS) RWY 18

PALM BEACH COUNTY GLADES (PHK)

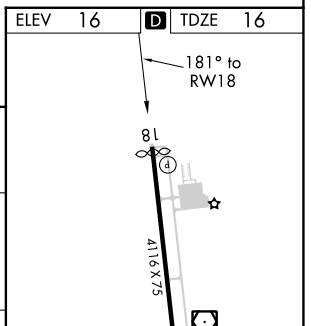
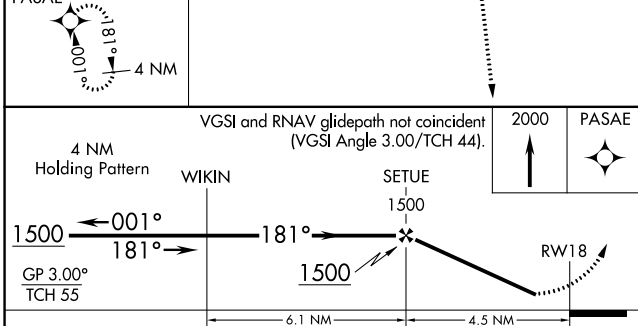
⚠ Baro-VNAV NA. Rwy 18 helicopter visibility reduction below $\frac{3}{4}$ SM NA.
⚠ DME/DME RNP-0.3 NA. Use Palm Beach Intl altimeter setting, when not received procedure NA.

MISSED APPROACH: Climb to 2000 direct PASAE and hold.

PBI ASOS 123.75	PALM BEACH APP CON 125.2 317.4	UNICOM 122.8 (CTAF) 0
---------------------------	--	---------------------------------



Procedure NA for arrival on PHK VOR/DME airway radials 274 CW 010.



CATEGORY	A	B	C	D
LPV DA	358-1 $\frac{1}{8}$		342 (400-1 $\frac{1}{8}$)	
LNAV/VNAV DA	342-1		326 (400-1)	
LNAV MDA	440-1 424 (500-1)		440-1 $\frac{1}{4}$ 424 (500-1 $\frac{1}{4}$)	
C CIRCLING	580-1 564 (600-1)		760-2 $\frac{1}{4}$ 744 (800-2 $\frac{1}{4}$)	

REIL Rwy 18 and 36
 MIRL Rwy 18-36 **0**

SE-3, 11 JUL 2024 to 08 AUG 2024

SE-3, 11 JUL 2024 to 08 AUG 2024