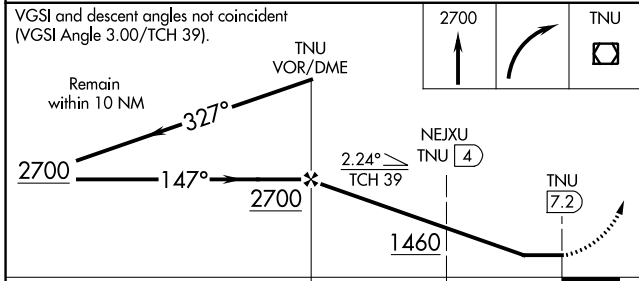
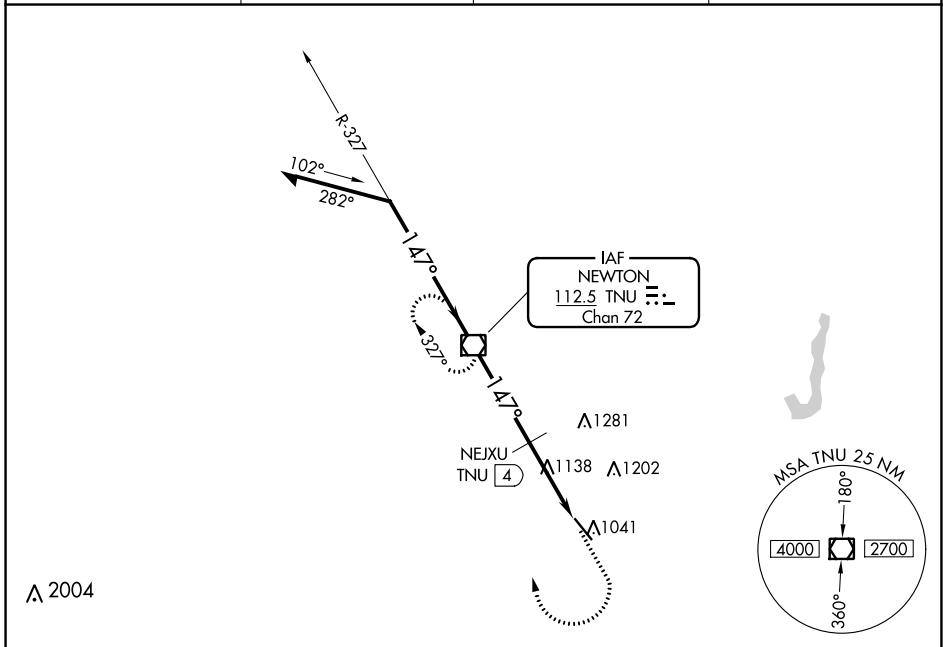


VOR/DME TNU 112.5 Chan 72	APP CRS 147°	Rwy Idg 5600 TDZE 953 Apt Elev 953
--	------------------------	---

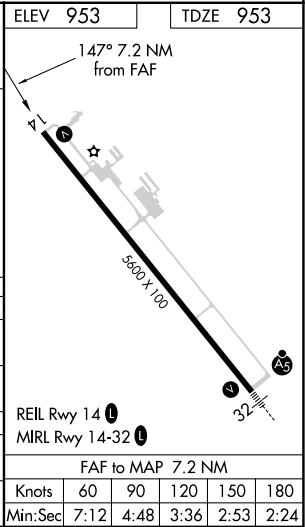
VOR RWY 14

NEWTON MUNI-EARL JOHNSON FLD (TNU)

<p>▽ Rwy 14 helicopter visibility reduction below 3/4 SM NA.</p>		<p>MISSED APPROACH: Climb to 2700 then right turn direct TNU VOR/DME and hold.</p>	
AWOS-3 132.275	DES MOINES APP CON 123.9 307.15	CLNC DEL 126.3	UNICOM 122.8 (CTAF) 0



CATEGORY	A	B	C	D
S-14	1460-1	507 (600-1)	1460-1 3/8 507 (600-1 3/8)	1460-1 1/2 507 (600-1 1/2)
C CIRCLING	1460-1	507 (600-1)	1520-1 1/2 567 (600-1 1/2)	1600-2 647 (700-2)
NEXJU DME MINIMUMS				
S-14	1400-1	447 (500-1)	1400-1 3/8 447 (500-1 3/8)	1400-1 1/2 447 (500-1 1/2)
C CIRCLING	1420-1 467 (500-1)	1440-1 487 (500-1)	1520-1 1/2 567 (600-1 1/2)	1600-2 647 (700-2)



NC-3, 11 JUL 2024 to 08 AUG 2024

NC-3, 11 JUL 2024 to 08 AUG 2024