

LOC I-MHK <b>111.3</b>	APP CRS <b>036°</b>	Rwy ldg TDZE Apt Elev	<b>7030</b> <b>1057</b> <b>1066</b>
---------------------------	------------------------	-----------------------------	---

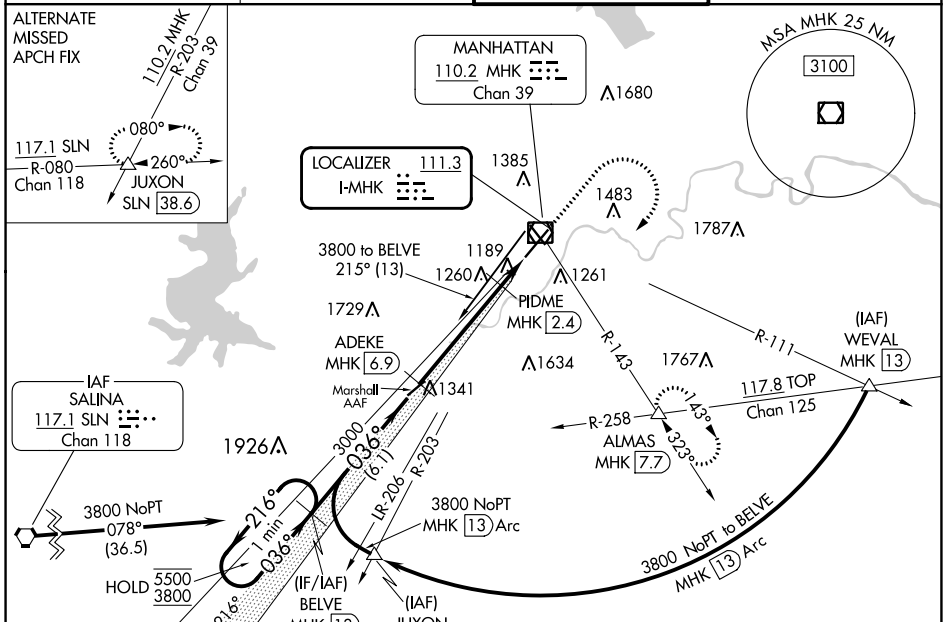
# ILS or LOC RWY 3

MANHATTAN RGNL (MHK)

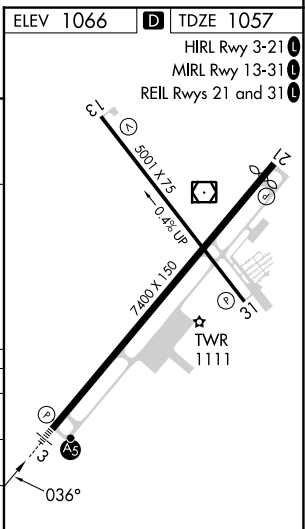
DME required.

**MAJORS**  
MISSED APPROACH: Climb to 2200 then climbing right turn to 3000 on MHK VOR/DME R-143 to ALMAS INT/MHK 7.7 DME and hold.

ASOS <b>119.075</b>	MARSHALL AAF GCA* <b>121.25 254.35</b>	MANHATTAN TOWER* <b>118.55</b> (CTAF) <b>0</b>	GND CON <b>121.85</b>
------------------------	---	---	--------------------------



One Minute Holding Pattern	BELVE MHK 13	2200	3000	ALMAS
	5500 ← 216°	3800 → 036°	3000	MHK R-143
GS 3.00° TCH 46	VGSIs and ILS glidepath not coincident (VGS Angle 3.00/TCH 50).			
	6.1 NM	4.6 NM	1.4 NM	
CATEGORY	A	B	C	D
S-ILS 3	1257-½		200 (200-½)	
S-LOC 3	1440-½	383 (400-½)	1440-⅝	383 (400-⅝)
CIRCLING	1540-1 474 (500-1)	1620-1 554 (600-1)	1920-2½ 854 (900-2½)	1920-2¾ 854 (900-2¾)



NC-2, 11 JUL 2024 to 08 AUG 2024

NC-2, 11 JUL 2024 to 08 AUG 2024