

LOC I-HSP <b>108.7</b>	APP CRS <b>247°</b>	Rwy Idg <b>5600</b> TDZE <b>3773</b> Apt Elev <b>3793</b>
---------------------------	------------------------	---

# ILS or LOC RWY 25

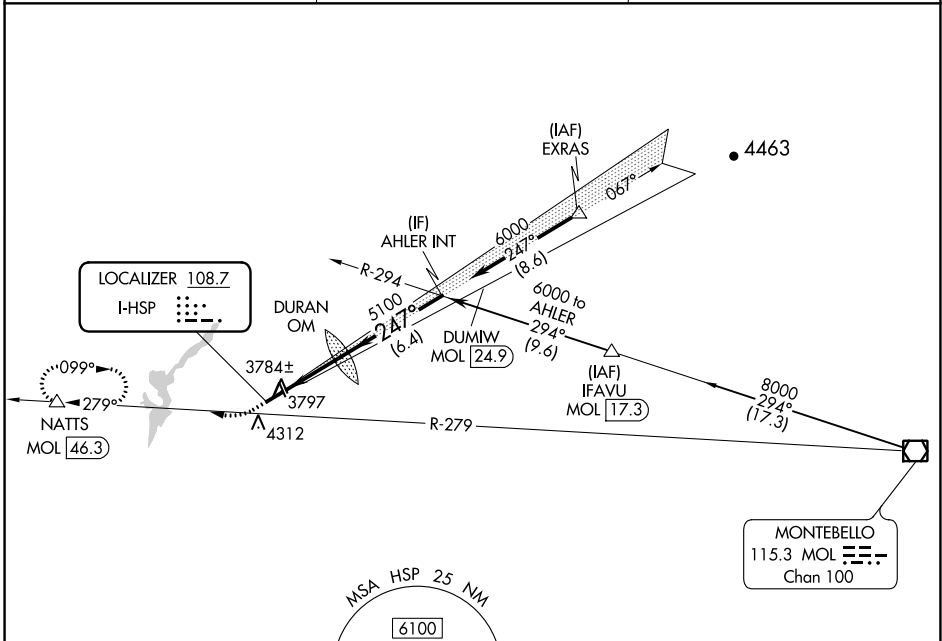
INGALLS FLD (HSP)

DME required.

▼ Circling to Rwy 7 NA at night.  
▲ NA Circling NA southeast of Rwy 7-25.

MISSED APPROACH: Climb to 4360, then climbing right turn to 6200 on heading 270° and MOL R-279 to NATTS/MOL 46.3 DME and hold. (DME required).

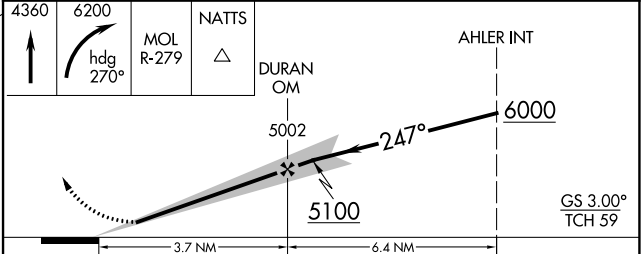
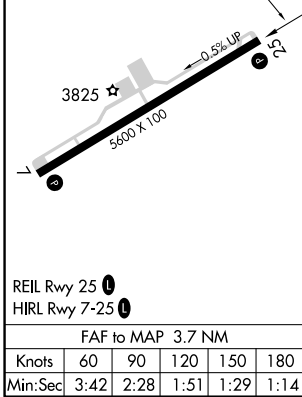
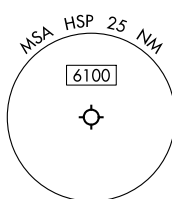
AWOS-3 <b>118.8</b>	WASHINGTON CENTER <b>134.4 353.9</b>	UNICOM <b>123.0 (CTAF) 0</b>
------------------------	---	---------------------------------



NE-3, 11 JUL 2024 to 08 AUG 2024

NE-3, 11 JUL 2024 to 08 AUG 2024

ELEV 3793	TDZE 3773
-----------	-----------



CATEGORY	A	B	C	D
S-ILS 25	4073- <sup>7</sup> / <sub>8</sub> 300 (300- <sup>7</sup> / <sub>8</sub> )			
S-LOC 25	4240-1	467 (500-1)	4240-1 <sup>3</sup> / <sub>8</sub>	467 (500-1 <sup>3</sup> / <sub>8</sub> )
<input checked="" type="checkbox"/> CIRCLING	4440-1 647 (700-1)	4480-1 687 (700-1)	4480-2 687 (700-2)	4480-2 <sup>1</sup> / <sub>4</sub> 687 (700-2 <sup>1</sup> / <sub>4</sub> )

FAF to MAP 3.7 NM					
Knots	60	90	120	150	180
Min:Sec	3:42	2:28	1:51	1:29	1:14

HOT SPRINGS, VIRGINIA  
Amdt 5A 10AUG23

37°57'N-79°50'W

# ILS or LOC RWY 25

INGALLS FLD (HSP)