

APP CRS	Rwy Idg	6757
299°	TDZE	25
	Apt Elev	28

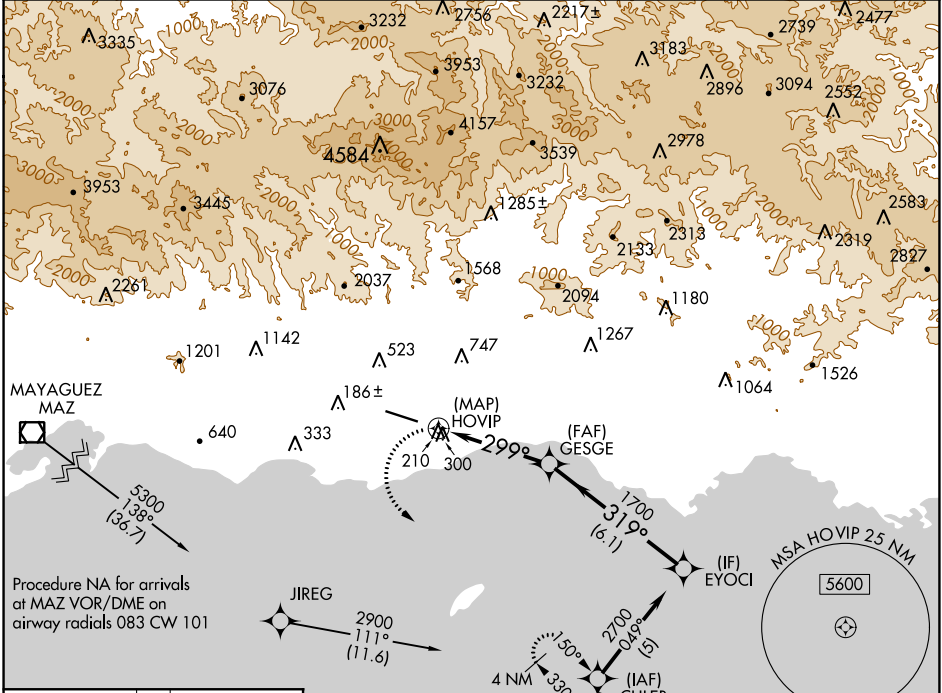
RNAV (GPS) RWY 30

MERCEDITA (PSE) (TJPS)

RNP APCH:
 ▼ Rwy 12, 30 helicopter visibility reduction below 1 SM NA. Obtain local altimeter setting on CTAf; when not received, use Luis Munoz Marin Intl altimeter setting.
 ▲ NA Circling NA for Cats C and D northeast of Rwy 12-30. Circling Rwy 12 NA at night.

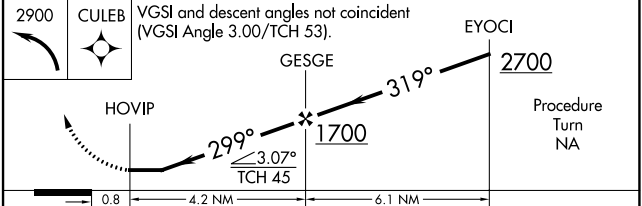
MISSED APPROACH: Climbing left turn to 2900 direct CULEB and hold.

AWOS-3PT 118.4	SAN JUAN CENTER 118.75 269.0	CLNC DEL 121.9	UNICOM 122.7 (CTAF)
--------------------------	--	--------------------------	-------------------------------



Procedure NA for arrivals at MAZ VOR/DME on airway radials 083 CW 101

ELEV	28	TDZE	25
------	-----------	------	-----------



CATEGORY	A	B	C	D
LNAV MDA	600-1	575 (600-1)	600-1½ 575 (600-1½)	600-1¾ 575 (600-1¾)
CIRCLING	840-1¼	812 (900-1¼)	840-2½ 812 (900-2½)	1040-3 1012 (1100-3)
LUIS MUNOZ MARIN INTL ALTIMETER SETTING MINIMUMS				
LNAV MDA	1200-1¼ 1175 (1200-1¼)	1200-1½ 1175 (1200-1½)	1200-3	1175 (1200-3)
CIRCLING	1440-1¼ 1412 (1500-1¼)	1440-1½ 1412 (1500-1½)	1440-3 1412 (1500-3)	1640-3 1612 (1700-3)

HIRL Rwy 12-30
 REIL Rwy 12 and 30

SE-3, 11 JUL 2024 to 08 AUG 2024

SE-3, 11 JUL 2024 to 08 AUG 2024