

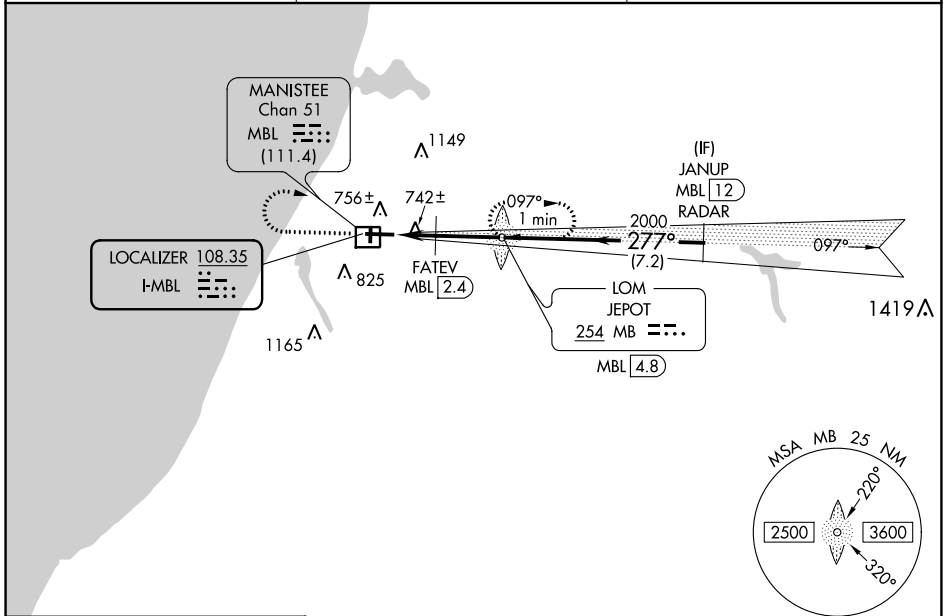
LOC I-MBL 108.35	APP CRS 277°	Rwy Idg 5501
		TDZE 621
		Apt Elev 621

ILS or LOC RWY 28

MANISTEE COUNTY/BLACKER (MBL)

ADF required for missed approach. RADAR required for procedure entry. DME or RADAR required.	MALSR 	MISSED APPROACH: Climb to 2000 then climbing right turn to 2500 direct JEPOT LOM/MBL 4.8 DME and hold.
Circling Rwy 1, 19 NA at night. For inop ALS, increase FATEV fix minimums S-LOC 28 Cat C and D visibility to 1 SM. DME from MBL DME. DME use requires simultaneous reception of I-MBL and MBL DME.		

AWOS-3PT 118.825	MINNEAPOLIS CENTER 120.85 322.35	UNICOM 122.8 (CTAF)
----------------------------	--	-------------------------------



ELEV 621	D	TDZE 621
----------	----------	----------

	2000	2500	MB LOM	VGSI and ILS glidepath not coincident (VGSI Angle 3.00/TCH 45).	JANUP MBL 12 RADAR
				MB LOM JEPOT MBL 4.8	
	FATEV MBL 2.4		1921	277°	2800
	MBL 0.9	MBL 1.9	1160	2000	GS 3.00° TCH 50
	1 NM	0.5 NM	2.4 NM	7.2 NM	
CATEGORY	A	B	C	D	
S-ILS 28	821-1/2				200 (200-1/2)
S-LOC 28	1160-1/2	539 (600-1/2)	1160-1		539 (600-1)
C CIRCLING	1160-1	1220-1	1400-2 1/4	1520-3	
	539 (600-1)	599 (600-1)	779 (800-2 1/4)	899 (900-3)	
FATEV FIX MINIMUMS					
S-LOC 28	1000-1/2	379 (400-1/2)	1000-5/8	379 (400-5/8)	
C CIRCLING	1160-1	1220-1	1400-2 1/4	1520-3	
	539 (600-1)	599 (600-1)	779 (800-2 1/4)	899 (900-3)	

HIRL Rwys 10-28
MIRL Rwys 1-19
REIL Rwy 10

FAF to MAP 3.9 NM					
Knots	60	90	120	150	180
Min:Sec	3:54	2:36	1:57	1:34	1:18

EC-1, 11 JUL 2024 to 08 AUG 2024

EC-1, 11 JUL 2024 to 08 AUG 2024