

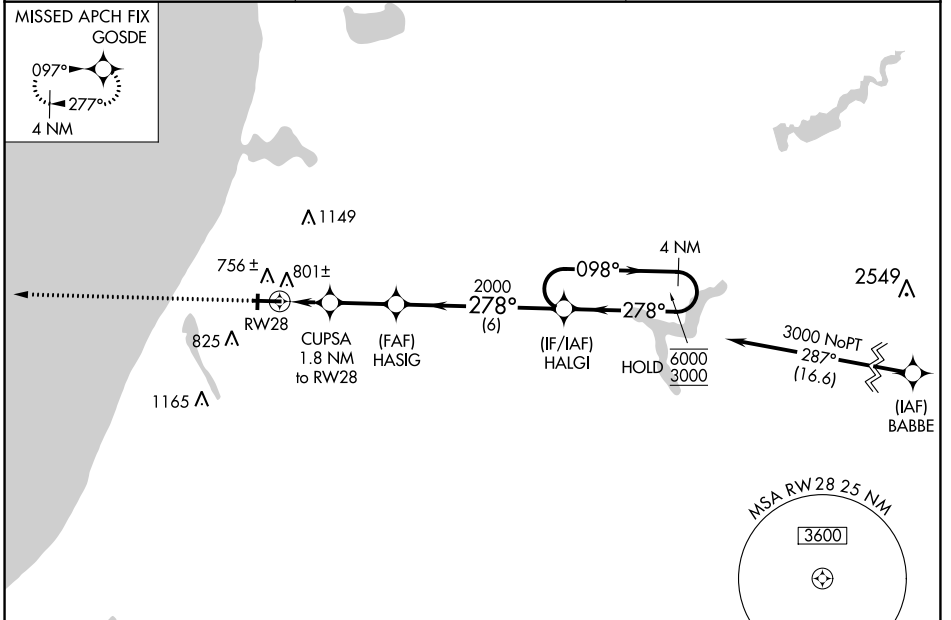
WAAS CH 42532 W28A	APP CRS 278°	Rwy Idg TDZE Apt Elev	5501 621 621
--	------------------------	-----------------------------	---

RNAV (GPS) RWY 28

MANISTEE COUNTY/BLACKER (MBL)

RNP APCH - GPS.	MALSR	MISSED APPROACH: Climb to 2500 direct GOSDE and hold.
<p>Circling to Rwy 1, 19 NA at night. For uncompensated Baro-VNAV systems, LNAV/VNAV NA below -16°C or above 54°C.</p>		

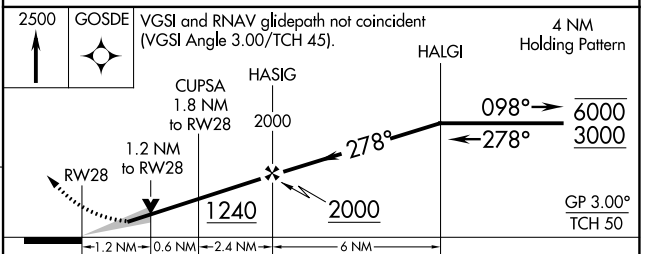
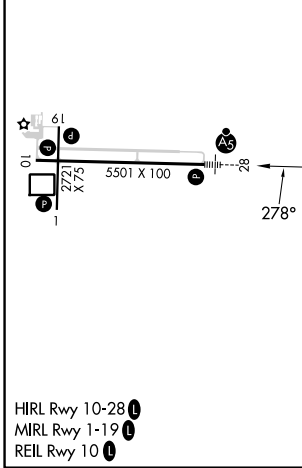
AWOS-3PT 118.825	MINNEAPOLIS CENTER 120.85 322.35	UNICOM 122.8 (CTAF) 0
----------------------------	--	---------------------------------



EC-1, 11 JUL 2024 to 08 AUG 2024

EC-1, 11 JUL 2024 to 08 AUG 2024

ELEV 621	D	TDZE 621
----------	----------	----------



CATEGORY	A	B	C	D
LPV DA		821-½	200 (200-½)	
LNAV/VNAV DA		984-⅝	363 (400-⅝)	
LNAV MDA	1060-½	439 (500-½)	1060-¾	439 (500-¾)
CIRCLING	1160-1 539 (600-1)	1220-1 599 (600-1)	1400-2¼ 779 (800-2¼)	1500-2¾ 879 (900-2¾)