

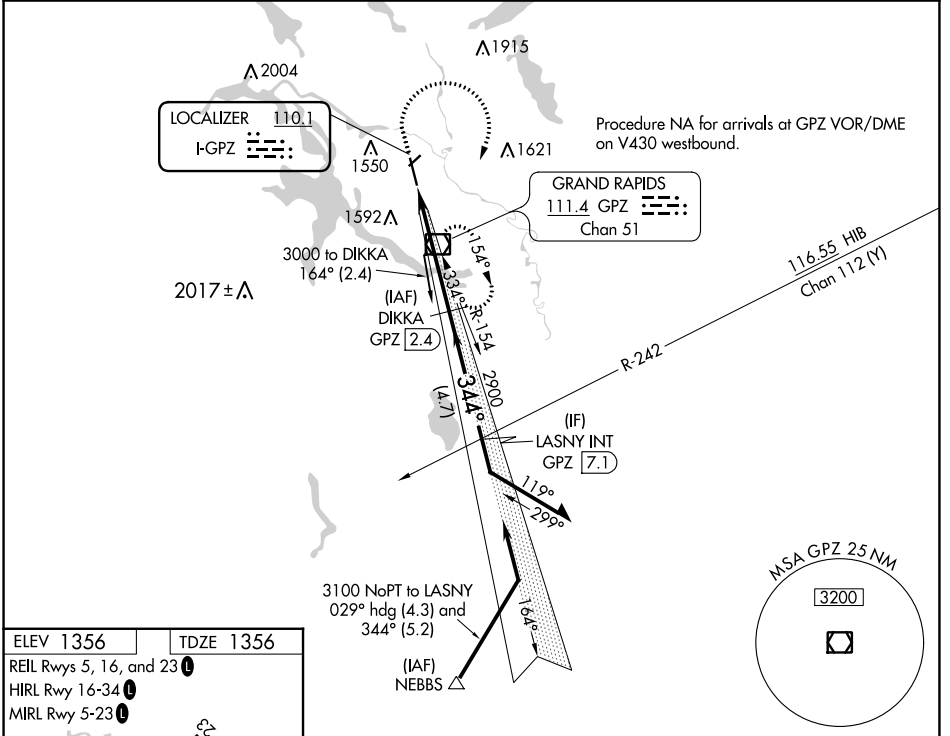
LOC I-GPZ <b>110.1</b>	APP CRS <b>344°</b>	Rwy Idg 5756 TDZE 1356 Apt Elev 1356
---------------------------	------------------------	---

# ILS or LOC RWY 34

GRAND RAPIDS/ITASCA COUNTY-GORDON NEWSTROM FLD (GPZ)

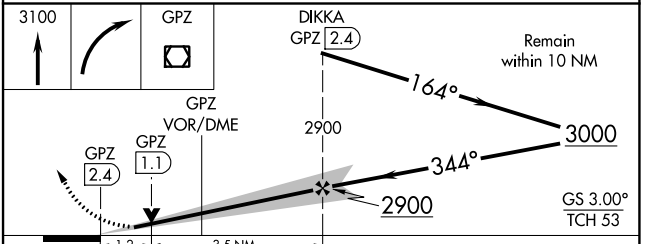
DME required for LOC only.		MALSR	MISSED APPROACH: Climb to 3100 then right turn direct GPZ VOR/DME and hold.
▼	Circling to Rwy 5, 23 NA at night.		
▲	Circling NA for Cat D east of Rwy 16-34.		

AWOS-3PT <b>118.425</b>	MINNEAPOLIS CENTER <b>127.9 281.45</b>	UNICOM <b>122.8</b> (CTAF)
----------------------------	---	-------------------------------



ELEV 1356	TDZE 1356
REIL Rwys 5, 16, and 23	
HIRL Rwy 16-34	
MIRL Rwy 5-23	

FAF to MAP 4.7 NM					
Knots	60	90	120	150	180
Min:Sec	4:42	3:08	2:21	1:53	1:34



CATEGORY	A	B	C	D
S-ILS 34	1556-½ 200 (200-½)			
S-LOC 34	1800-½ 444 (500-½)	1800-⅞ 444 (500-⅞)		
CIRCLING	1900-1 544 (600-1)	1900-1½ 544 (600-1½)	1960-2	1960-2 604 (700-2)

NC-1, 11 JUL 2024 to 08 AUG 2024

NC-1, 11 JUL 2024 to 08 AUG 2024