

WAAS CH 61005 W21A	APP CRS 207°	Rwy ldg TDZE 5008 980 Apt Elev 996
--	------------------------	--

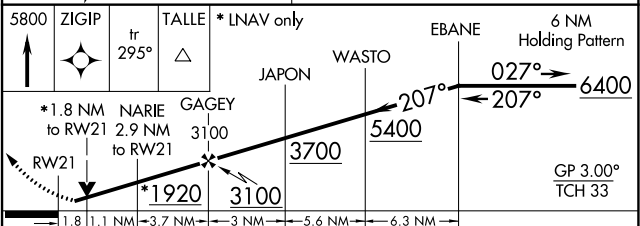
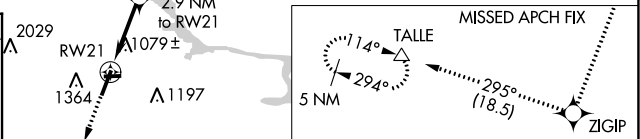
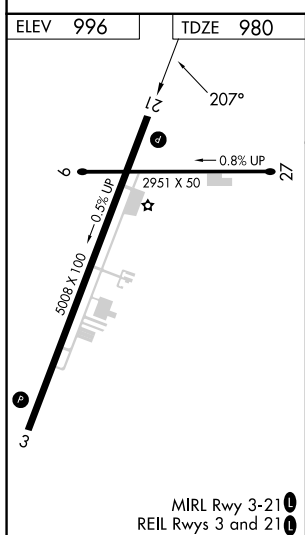
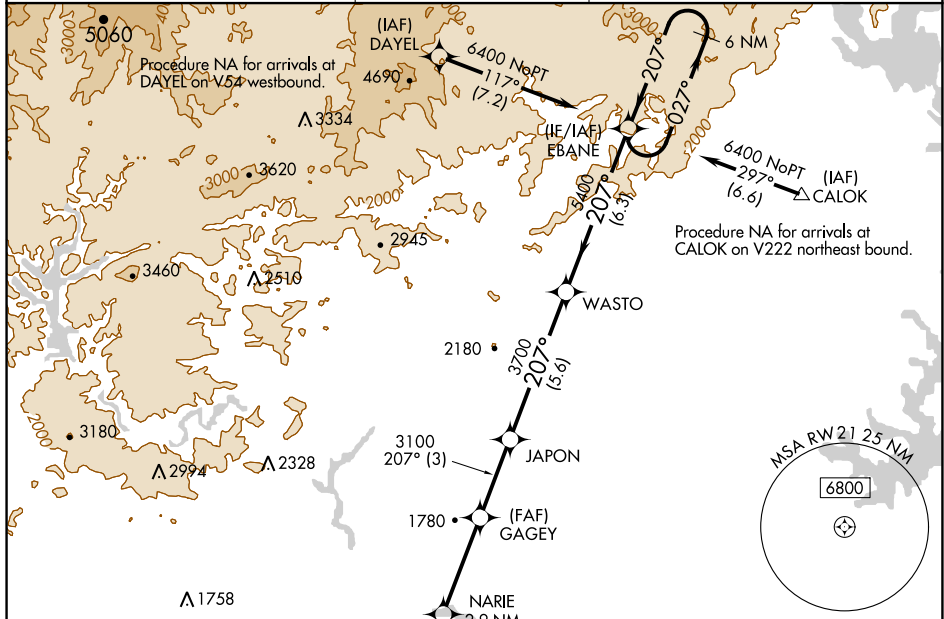
RNAV (GPS) RWY 21

TOCCOA RG LETOURNEAU FLD (TOC)

RNP APCH:
 ▼ Baro-VNAV and VDP NA when using Gainesville altimeter setting. For uncompensated Baro-VNAV systems, LNAV/VNAV NA below -8°C or above 54°C. When local altimeter setting not received, use Gainesville altimeter setting: Increase LPV DA to 1345 feet, LNAV/VNAV DA to 1510 feet, and increase all MDAs 120 feet, increase LNAV/LNAV visibility all Cats ½ SM, LNAV visibility Cats C/D ¾ SM and Circling visibility Cats A/B ½ SM and Cat C ½ SM. Circling Rwy 9, 27 NA at night.

MISSED APPROACH:
 Climb to 5800 direct ZIGIP and on track 295° to TALLE and hold, continue climb-in-hold to 5800.

AWOS-3 119.625	ATLANTA CENTER 134.8 379.95	UNICOM 122.8 (CTAF) 0
--------------------------	---------------------------------------	---------------------------------



CATEGORY	A	B	C	D
LPV DA		1230-1	250 (300-1)	
LNAV/VNAV DA		1395-1½	415 (400-1½)	
LNAV MDA	1560-1	580 (600-1)	1560-1½	580 (600-1½)
<input checked="" type="checkbox"/> CIRCLING	1720-1	724 (800-1)	1760-2¼ 764 (800-2¼)	2480-3 1484 (1500-3)

SE-4, 11 JUL 2024 to 08 AUG 2024

SE-4, 11 JUL 2024 to 08 AUG 2024