


VOR/DME JBR 115.85 Chan 105(Y)	APP CRS 227°	Rwy Idg TDZE Apt Elev	6200 262 262
--	------------------------	-----------------------------	---

VOR RWY 23

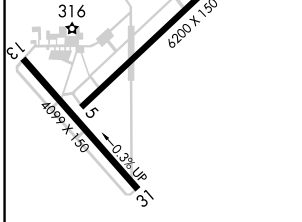
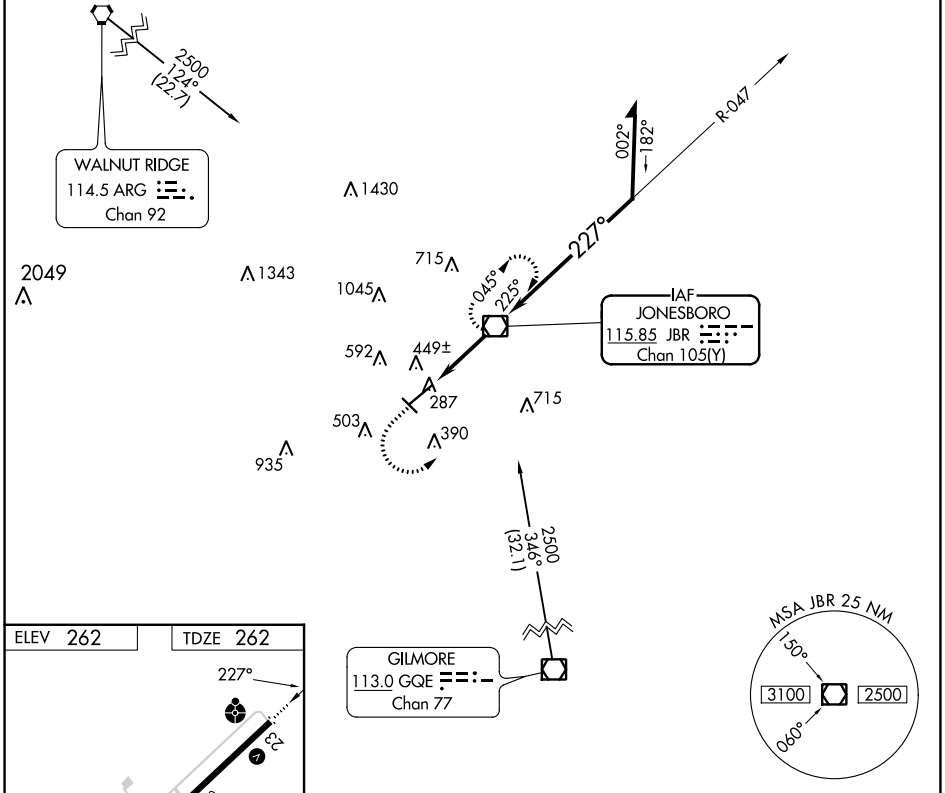
JONESBORO MUNI (JBR)

⚠ Circling Rwy 31 NA at night. Circling NA northwest of Rwy 5-23.
 ⚠ Rwy 23 helicopter visibility reduction below 3/4 SM NA. When local altimeter not received, use Walnut Ridge altimeter setting and increase all MDAs 60 feet and S-23 Cat C/D visibility 1/8 SM and Circling Cat C 1/2 SM.

ODALS


MISSED APPROACH: Climb to 2000 then climbing left turn to 2300 direct JBR VOR/DME and hold.

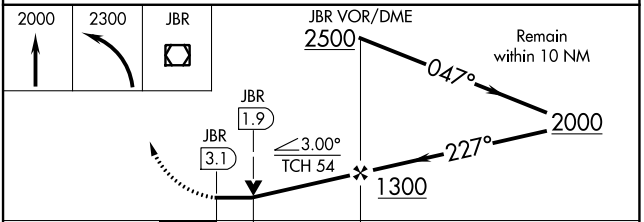
ASOS 118.525	MEMPHIS CENTER 120.075 289.4	UNICOM 123.0 (CTAF)
------------------------	--	-------------------------------



MRL Rwys 5-23 and 13-31

FAF to MAP 3.1 NM

Knots	60	90	120	150	180
Min:Sec	3:06	2:04	1:33	1:14	1:02



CATEGORY	A	B	C	D
S-23	700-3/4	438 (500-3/4)	700-1 1/8	438 (500-1 1/8)
CIRCLING	740-1	478 (500-1)	820-1 1/2	1080-2 3/4
			558 (600-1 1/2)	818 (900-2 3/4)

SC-1, 11 JUL 2024 to 08 AUG 2024

SC-1, 11 JUL 2024 to 08 AUG 2024