

WAAS CH <b>98652</b> <b>W08B</b>	APP CRS <b>084°</b>	Rwy Idg <b>4054</b> TDZE <b>457</b> Apt Elev <b>457</b>
----------------------------------------	------------------------	---------------------------------------------------------------

# RNAV (GPS) Z RWY 8

DANBURY MUNI (D.X.R)

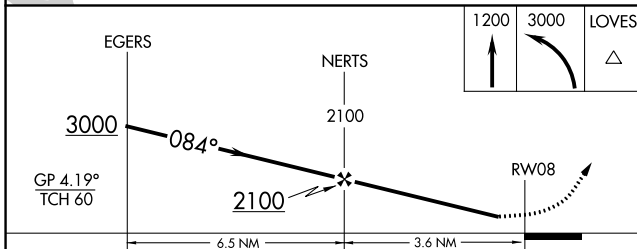
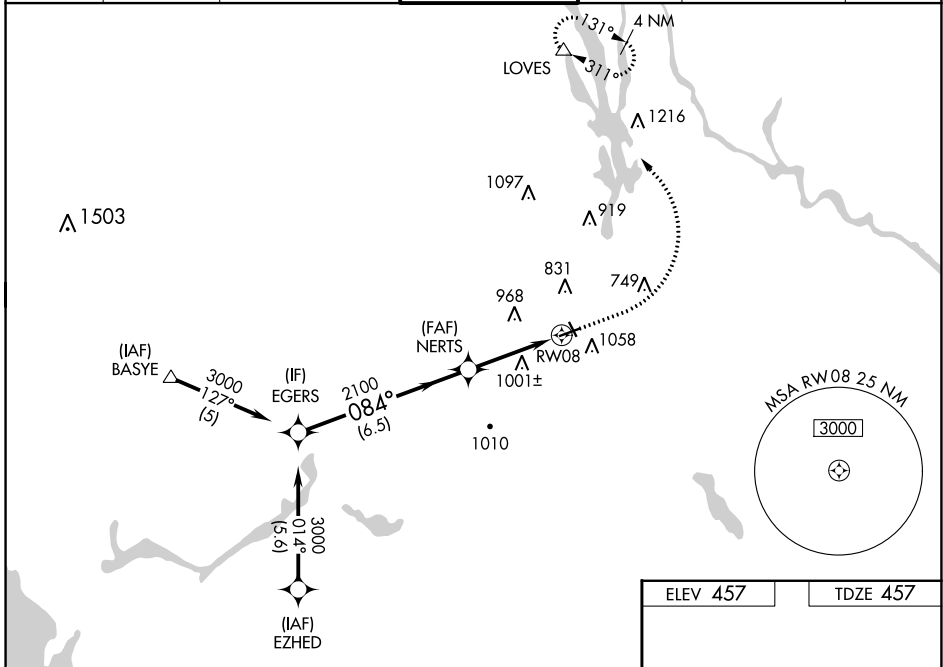
RNP APCH - GPS.

⚠ When local altimeter setting not received, use White Plains altimeter setting and increase LPV DA to 1090 feet and all visibilities  $\frac{1}{8}$  SM. Increase LNAV/VNAV DA to 1412 feet and all visibilities  $\frac{1}{2}$  SM.

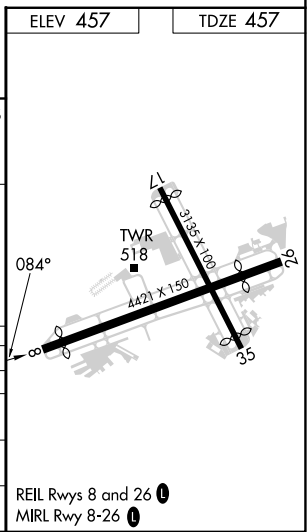
⚠ Increase all MDAs 60 feet; and Circling visibility Cat A  $\frac{1}{4}$  SM. For uncompensated Baro-VNAV systems, LNAV/VNAV NA below -15°C or above 46°C. Baro-VNAV NA when using White Plains altimeter setting. Helicopter visibility reduction below 1 SM NA. Circling NA south of Rwy 8-26. Circling Rwy 26, 17 NA at night.

MISSED APPROACH: Climb to 1200 then climbing left turn to 3000 direct LOVES and hold.

ATIS <b>127.75</b>	HPN ASOS <b>133.8</b>	NEW YORK APP CON <b>126.4 257.65</b>	DANBURY TOWER* <b>119.4</b> (CTAF)	GND CON <b>121.6</b>	CLNC DEL <b>128.6</b> (When twr closed)	UNICOM <b>122.95</b>
-----------------------	--------------------------	-----------------------------------------	---------------------------------------	-------------------------	-----------------------------------------------	-------------------------



CATEGORY	A	B	C	D
LPV DA	1030-1 $\frac{5}{8}$	573 (600-1 $\frac{5}{8}$ )		NA
LNAV/VNAV DA	1352-2 $\frac{1}{2}$	895 (900-2 $\frac{1}{2}$ )		NA
LNAV MDA	1240-1 783 (800-1)	1280-1 $\frac{1}{4}$ 823 (900-1 $\frac{1}{4}$ )		NA
CIRCLING	1240-1 783 (800-1)	1280-1 $\frac{1}{4}$ 823 (900-1 $\frac{1}{4}$ )		NA



NE-1, 11 JUL 2024 to 08 AUG 2024

NE-1, 11 JUL 2024 to 08 AUG 2024