

WAAS CH 97539 W29A	APP CRS 286°	Rwy Idg TDZE Apt Elev	5502 1419 1419
--	------------------------	-----------------------------	---

RNAV (GPS) RWY 29

INDIANA COUNTY/JIMMY STEWART FLD (IDI)

RNP APCH - GPS

▼ Baro-VNAV and VDP NA when using Allegheny County altimeter setting. For uncompensated Baro-VNAV systems, LNAV/VNAV NA below -17°C or above 54°C. Rwy 29 helicopter visibility reduction below 3/4 SM NA. When local altimeter setting not received, use Allegheny County altimeter setting and increase LPV DA to 1874 feet and all visibilities 3/4 SM. Increase LNAV/VNAV DA to 2099 feet and all visibilities 1/4 SM. Increase all MDAs 120 feet and LNAV visibility Cat C/D 3/4 SM, and Circling visibility Cat A/B 1/4 SM.

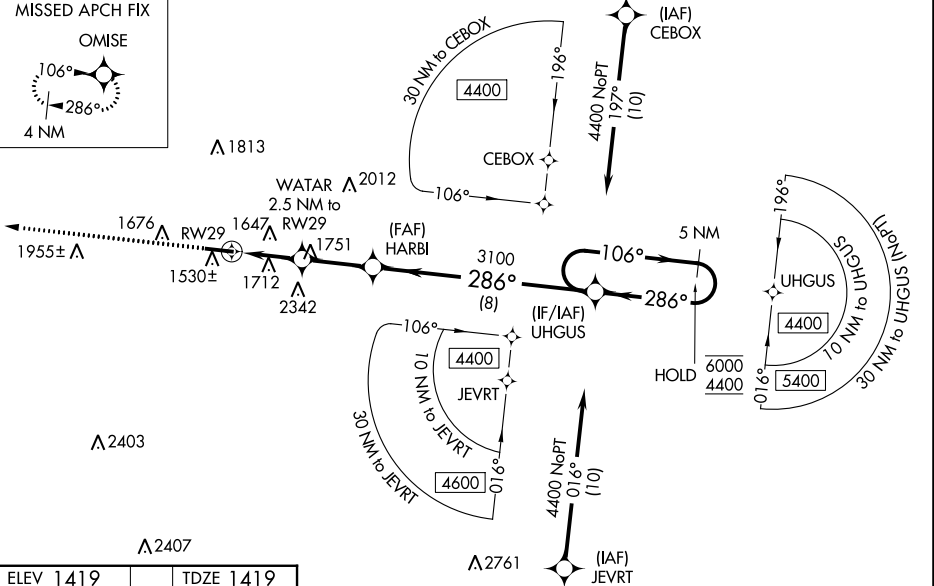
MISSED APPROACH:
Climb to 3600 direct OMISE and hold.

AWOS-3
126.625

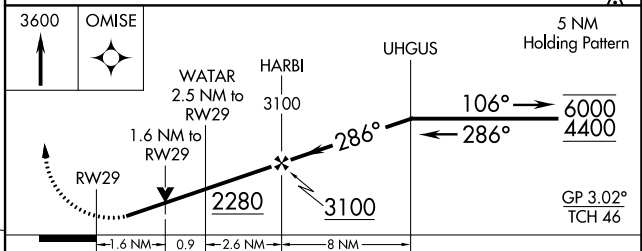
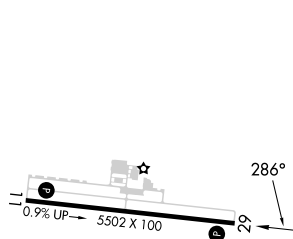
JOHNSTOWN APP CON *
121.2 299.2

UNICOM
122.8 (CTAF) 0

MISSED APCH FIX



ELEV 1419	TDZE 1419
-----------	-----------



CATEGORY	A	B	C	D
LPV DA		1755-1	336 (400-1)	
LNAV/VNAV DA		1980-1½	561 (600-1½)	
LNAV MDA	1980-1	561 (600-1)	1980-1½	561 (600-1½)
CIRCLING	2120-1 701 (800-1)	2180-1 761 (800-1)	2660-3	1241 (1300-3)

REIL Rwy 11 **0**
HIRL Rwy 11-29 **0**

RNAV (GPS) RWY 29

NE-4, 11 JUL 2024 to 08 AUG 2024

NE-4, 11 JUL 2024 to 08 AUG 2024