

| | | |
|-------------|----------|-------------|
| APP CRS | Rwy ldg | 3204 |
| 032° | TDZE | 11 |
| | Apt Elev | 12 |

RNAV (GPS) RWY 2

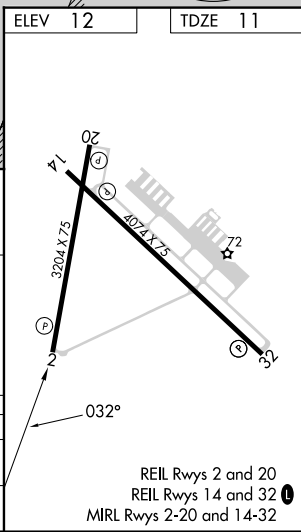
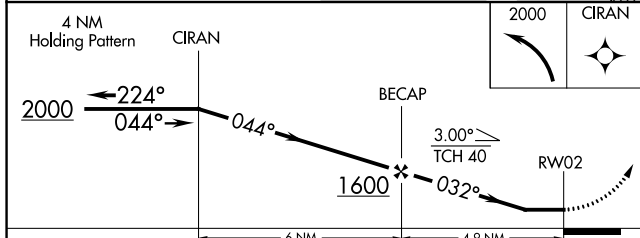
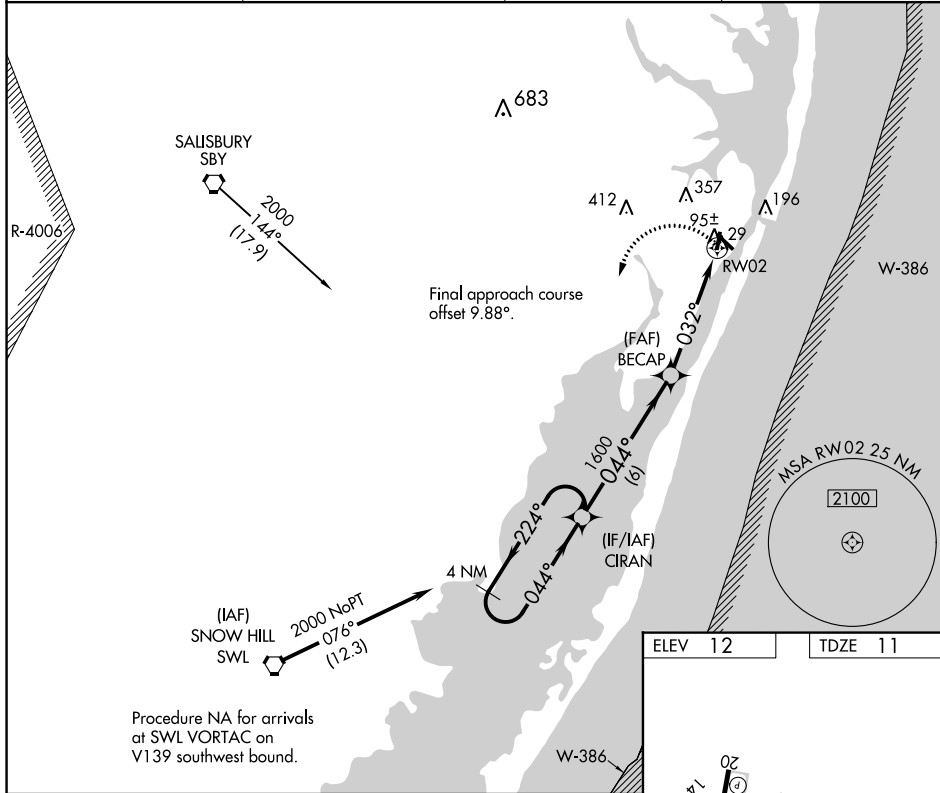
OCEAN CITY MUNI (OXB)

RNP APCH.

▼ When local altimeter setting not received, use Salisbury altimeter setting and increase all MDA 60 feet and visibility LNAV Cat C 1/8 SM and Circling Cat C 1/4 SM. Straight-in Rwy 2 NA at night, Circling Rwy 2, 14, 20 NA at night. Rwy 2 helicopter visibility reduction below 1 SM NA.

MISSED APPROACH: Climbing left turn to 2000 direct CIRAN and hold.

| | | | |
|------------------------|---|---------------------------|----------------------------------|
| ASOS 119.025 | PATUXENT APP CON * 127.95 314.0 | CLNC DEL 121.75 | UNICOM 123.05 (CTAF) 0 |
|------------------------|---|---------------------------|----------------------------------|



| CATEGORY | A | B | C | D |
|----------|----------------------|----------------------|------------------------------|----|
| LNAV MDA | 420-1 | 409 (500-1) | 420-1 1/4 409 (500-1 1/4) | NA |
| CIRCLING | 480-1 468 (500-1) | 660-1 648 (700-1) | 660-1 3/4 648 (700-1 3/4) | NA |

NE-3, 11 JUL 2024 to 08 AUG 2024

NE-3, 11 JUL 2024 to 08 AUG 2024