

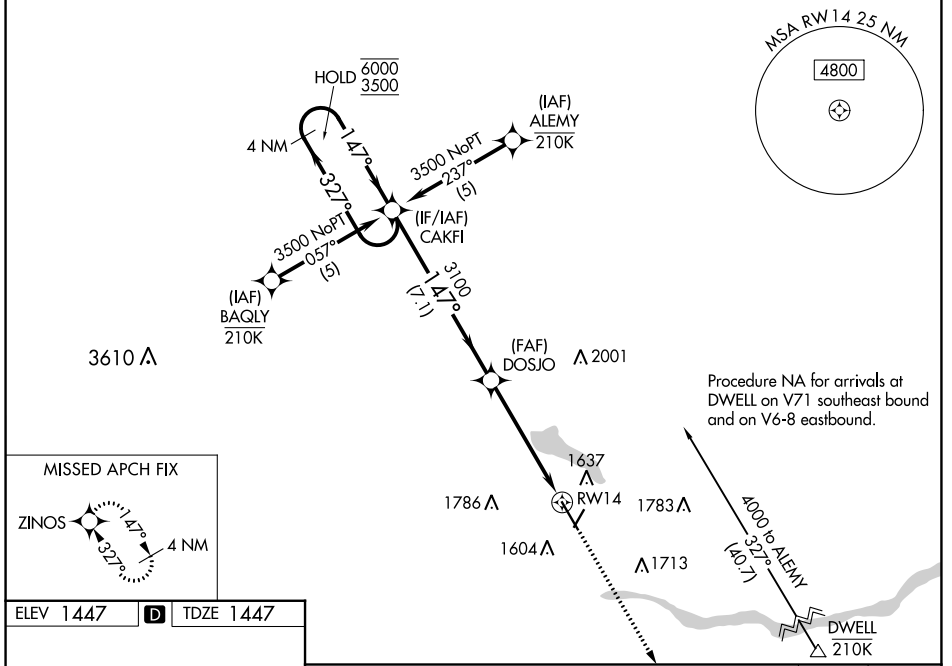
WAAS CH 60910 W14A	APP CRS 147°	Rwy Idg TDZE Apt Elev	6260 1447 1447
----------------------------------------	------------------------	-----------------------------	-------------------------------------------

RNAV (GPS) RWY 14

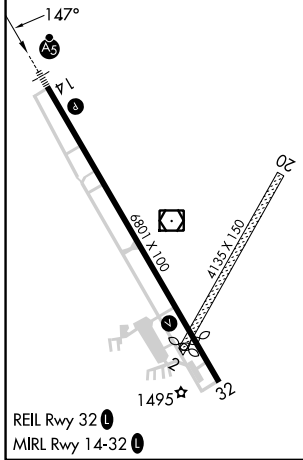
COLUMBUS MUNI (OLU)

RNP APCH - GPS.	MALSR	MISSED APPROACH: Climb to 4000 direct ZINOS and hold.
<p>⚠ NA Circling NA to Rwys 2 and 20. Rwy 14 helicopter visibility reduction below 3/4 SM NA. For uncompensated Baro-VNAV systems, LNAV/VNAV NA below -23°C or above 54°C. For inop ALS, increase LPV all Cats visibility to 7/8 SM.</p>		

AWOS-3PT 125.525	MINNEAPOLIS CENTER 128.75 346.3	UNICOM 123.05 (CTAF) 0
----------------------------	-------------------------------------------	----------------------------------



ELEV 1447	D	TDZE 1447
-----------	----------	-----------



	4000	ZINOS		
4 NM Holding Pattern	CAKFI	DOSJO		
6000 ← 327°	→ 147°	1.7 NM to RWY 14		
3500	3100	RWY 14		
GP 3.00°	7.1 NM	3.4 NM		
TCH 40		1.7 NM		
CATEGORY	A	B	C	D
LPV DA		1750-3/4	303 (400-3/4)	
LNAV/VNAV DA		1840-3/4	393 (400-3/4)	
LNAV MDA	2020-3/4	573 (600-3/4)	2020-1 1/4	573 (600-1 1/4)
C CIRCLING	2020-1	573 (600-1)	2100-1 3/4	2100-2
			653 (700-1 3/4)	653 (700-2)

NC-2, 11 JUL 2024 to 08 AUG 2024

NC-2, 11 JUL 2024 to 08 AUG 2024