

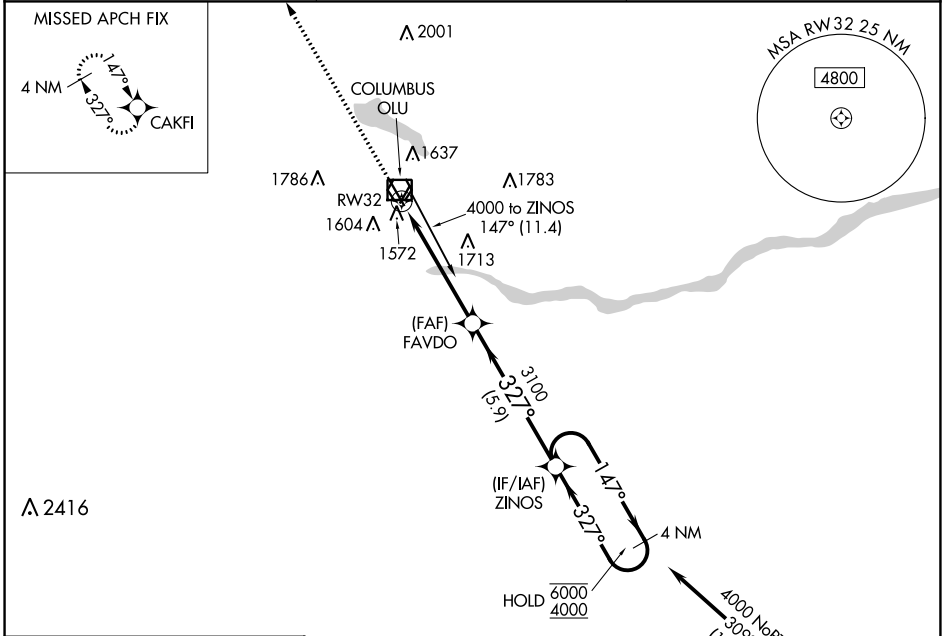
WAAS CH <b>81810</b> <b>W32A</b>	APP CRS <b>327°</b>	Rwy Idg TDZE Apt Elev	<b>5850</b> <b>1443</b> <b>1447</b>
--	------------------------	-----------------------------	---

# RNAV (GPS) RWY 32

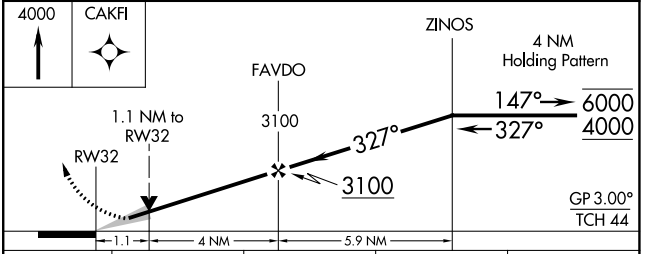
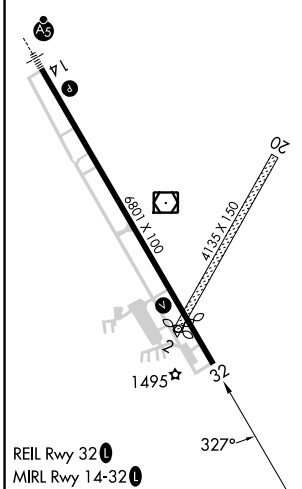
COLUMBUS MUNI (OLU)

RNP APCH - GPS.	MISSED APPROACH: Climb to 4000 direct CAKFI and hold.
<p>▼ Circling NA to Rwys 2 and 20. For uncompensated Baro-VNAV systems, LNAV/VNAV NA below -22°C or above 54°C.</p> <p>▲ NA</p>	

AWOS-3PT <b>125.525</b>	MINNEAPOLIS CENTER <b>128.75 346.3</b>	UNICOM <b>123.05 (CTAF) 0</b>
----------------------------	---	----------------------------------



ELEV 1447	<b>D</b>	TDZE 1443
-----------	----------	-----------



CATEGORY	A	B	C	D
LPV DA		1710- <sup>7</sup> / <sub>8</sub>	267 (300- <sup>7</sup> / <sub>8</sub> )	
LNAV/VNAV DA		1840-1 <sup>1</sup> / <sub>8</sub>	397 (400-1 <sup>1</sup> / <sub>8</sub> )	
LNAV MDA	1840-1	397 (400-1)	1840-1 <sup>1</sup> / <sub>8</sub>	397 (400-1 <sup>1</sup> / <sub>8</sub> )
<b>C</b> CIRCLING	2000-1	553 (600-1)	2100-1 <sup>3</sup> / <sub>4</sub> 653 (700-1 <sup>3</sup> / <sub>4</sub> )	2100-2 653 (700-2)

NC-2, 11 JUL 2024 to 08 AUG 2024

NC-2, 11 JUL 2024 to 08 AUG 2024