

WAAS CH 63241 W33A	APP CRS 326°	Rwy Idg 4350 TDZE 142 Apt Elev 148
--	------------------------	---

RNAV (GPS) RWY 33

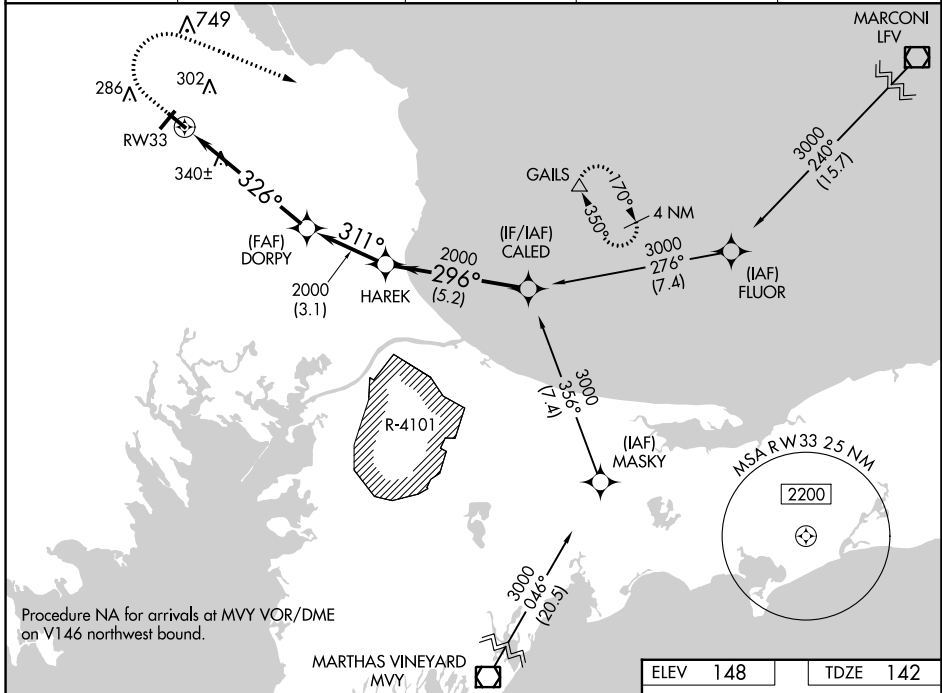
PLYMOUTH MUNI (PYM)

RNP APCH - GPS.

⚠ Circling Rwy 15, 24 NA at night. Rwy 33 helicopter visibility reduction below 3/4 SM NA.
⚠ For uncompensated Baro-VNAV systems, LNAV/VNAV NA below -18°C or above 54°C.

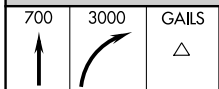
MISSED APPROACH: Climb to 700 then climbing right turn to 3000 direct GAILS and hold.

ASOS 135.625	BOSTON APP CON ★ 118.2 284.6	CLINC DEL 127.75	UNICOM 122.725 (CTAF)	122.9 0
------------------------	--	----------------------------	---------------------------------	----------------

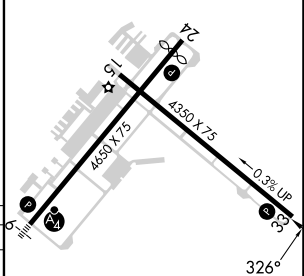
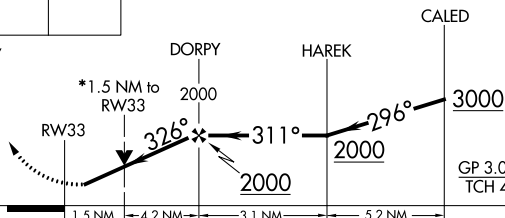


Procedure NA for arrivals at MVY VOR/DME on V146 northwest bound.

ELEV 148	TDZE 142
-----------------	-----------------



* LNAV only



CATEGORY	A	B	C	D
LPV DA	393-3/4	251 (300-3/4)		NA
LNAV/VNAV DA	486-1	344 (400-1)		NA
LNAV MDA	660-1	518 (600-1)	660-1 3/8 518 (600-1 3/8)	NA
C CIRCLING	660-1	512 (600-1)	760-1 3/4 612 (700-1 3/4)	NA

REIL Rwy 24 **0**
 MIRL Rwy 6-24 and 15-33 **0**

NE-1, 11 JUL 2024 to 08 AUG 2024

NE-1, 11 JUL 2024 to 08 AUG 2024