

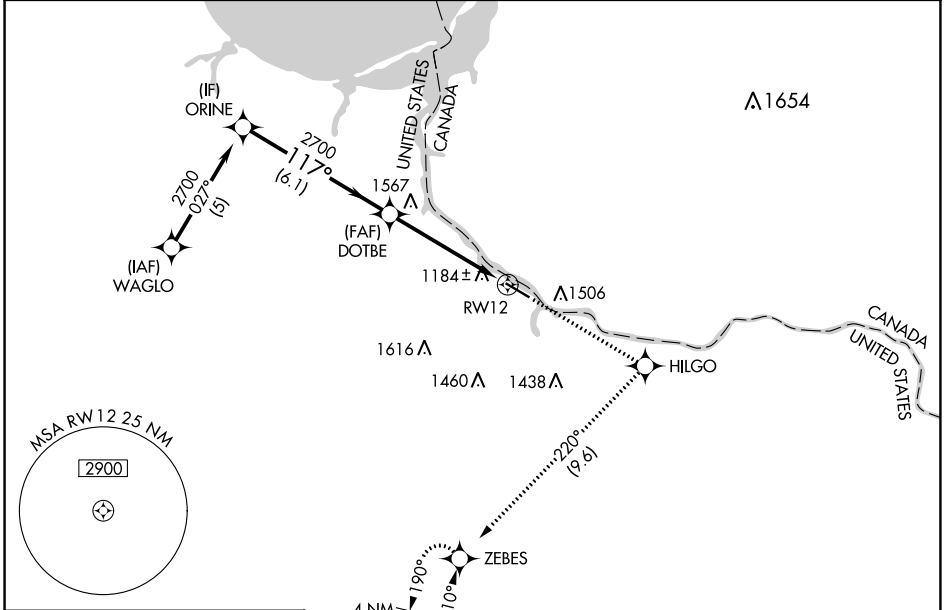
APP CRS <b>117°</b>	Rwy Idg TDZE Apt Elev	<b>5498</b> <b>1085</b> <b>1085</b>
------------------------	-----------------------------	---

# RNAV (GPS) RWY 12

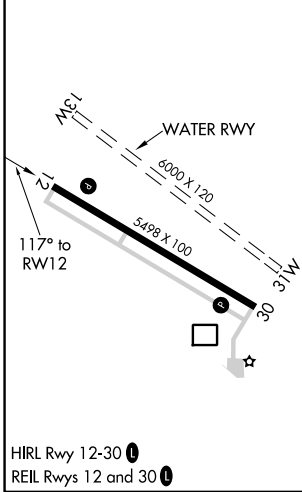
BAUDETTE INTL (BDE)

RNP APCH.	MISSED APPROACH: Climb to 3000 direct HILGO and right turn on track 220° to ZEBES and hold.
<p>▼ Rwy 12 helicopter visibility reduction below 3/4 SM NA.</p> <p>▲ For uncompensated Baro-VNAV systems, LNAV/VNAV NA below -17°C or above 54°C.</p>	

ASOS <b>126.775</b>	MINNEAPOLIS CENTER <b>134.75 251.1</b>	UNICOM <b>122.8 (CTAF)</b>
------------------------	---	-------------------------------



ELEV 1085	TDZE 1085
-----------	-----------



	ORINE	DOTBE	3000 HILGO	ZEBES
	2700	2700	↑	↻ tr 220°
	2700	117°	*1.3 NM to RWY12	*LNAV only
	6.1 NM	3.6 NM	1.3 NM	
GP 3.00° TCH 47				
CATEGORY	A	B	C	D
LNAV/VNAV DA	1481-1½ 396 (400-1½)			
LNAV MDA	1560-1	475 (500-1)	1560-1¾ 475 (500-1¾)	1560-1½ 475 (500-1½)

NC-1, 11 JUL 2024 to 08 AUG 2024

NC-1, 11 JUL 2024 to 08 AUG 2024