

LOC/DME I-MCK <b>110.95</b> Chan 46 (Y)	APP CRS <b>123°</b>	Rwy Idg <b>5698</b> TDZE <b>2583</b> Apt Elev <b>2583</b>
---	------------------------	---

# ILS or LOC/DME RWY 12

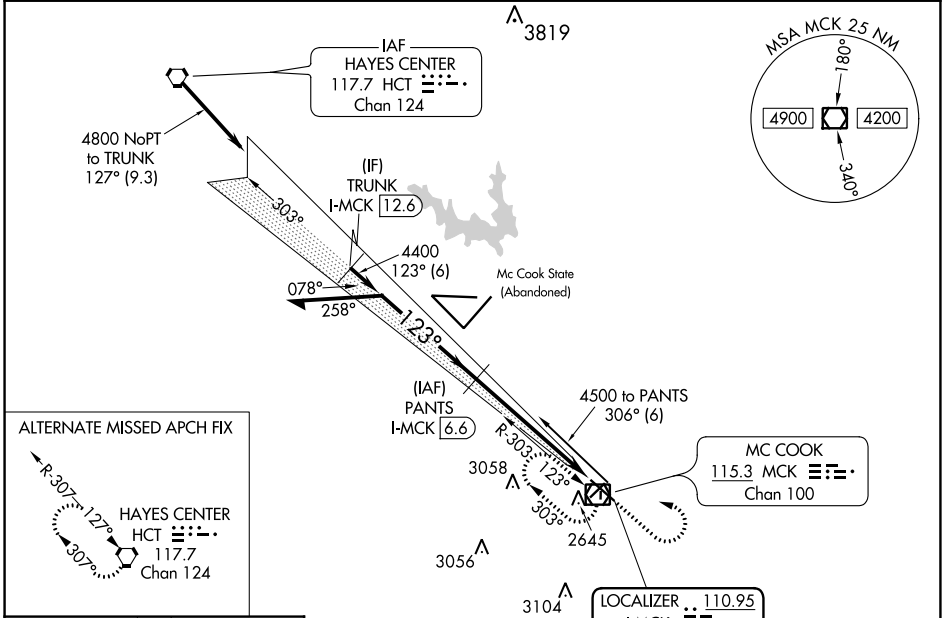
MC COOK BEN NELSON RGNL (MCK)

**⚠** Circling NA to Rwys 17 and 35. When local altimeter setting not received, use Imperial Muni altimeter setting and increase DA 213 feet and S-ILS 12 all visibilities ½ mile; increase all MDAs 220 feet and S-LOC 12 and Circling visibilities Cats A and B ¼ mile, Cat C 1 mile. VDP NA when using Imperial Muni altimeter setting. For inoperative MALSR, when using Imperial Muni altimeter setting increase S-ILS 12 all visibilities to 1½, and S-LOC 12 Cat A visibility to 1.

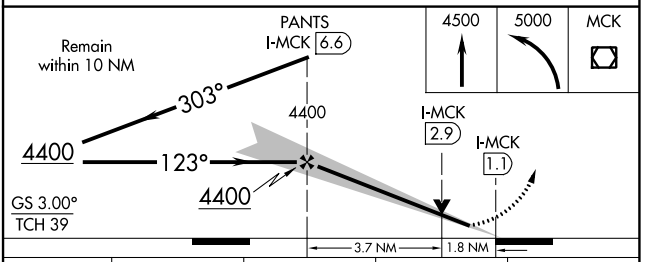
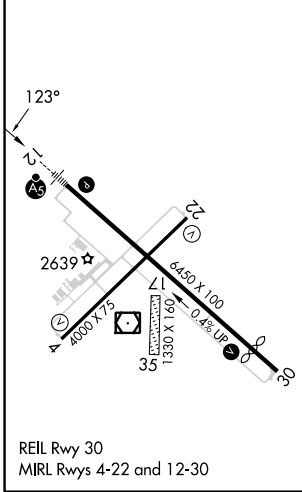
**MALSR**

**MISSED APPROACH:** Climb to 4500 then climbing left turn to 5000 direct MCK VOR/DME and hold.

ASOS <b>119.025</b>	DENVER CENTER <b>132.7 226.675</b>	UNICOM <b>122.8 (CTAF)</b>
------------------------	---------------------------------------	-------------------------------



ELEV 2583	<b>D</b>	TDZE 2583
-----------	----------	-----------



CATEGORY	A	B	C	D
S-ILS 12	2783-½ 200 (200-½)			NA
S-LOC 12	3180-½	597 (600-½)	3180-1 597 (600-1)	NA
CIRCLING	3180-1	597 (600-1)	3360-2¼ 777 (800-2¼)	NA

NC-2, 11 JUL 2024 to 08 AUG 2024

NC-2, 11 JUL 2024 to 08 AUG 2024